

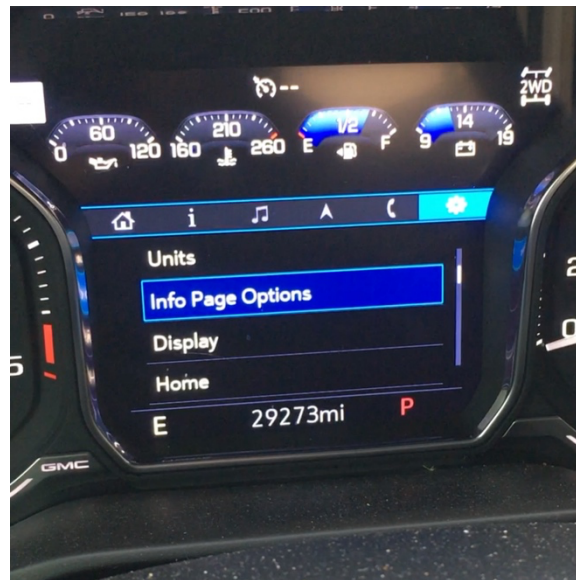


## 2020+ L5P Duramax Full Intake Kit

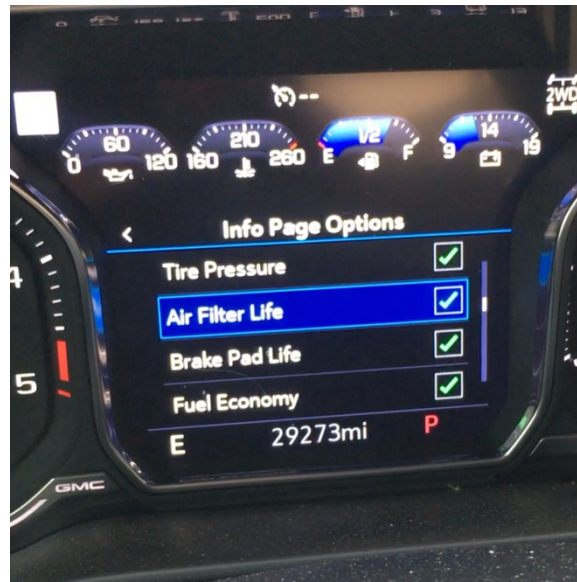
Covers installation of PN: WCF100702

**FAILURE TO DISABLE AIR FILTER MONITOR SYSTEM WILL RESULT IN A SERVICE AIR FILTER MESSAGE AND REQUIRE DEALERSHIP TO RESET THE SYSTEM. THE AIR FILTER LIFE WILL SHOW DISABLED MESSAGE WHEN SETTINGS ARE CORRECT.**

1. Be sure to disable your air filter monitoring system from your truck using driver info system and steering wheel controls.
  - a. Go to Info Page Options.



b. Make sure that the air filter life has a check mark.



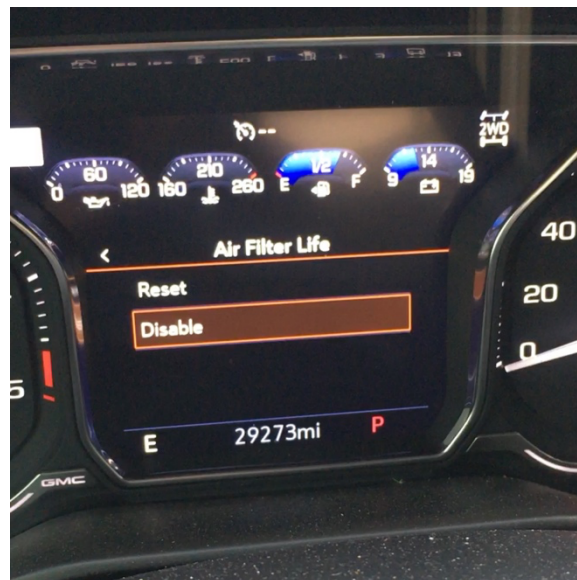
c. Go back to the Information tab.



- d. Scroll to the right to Air Filter Life is shown and hit OK.



- e. Scroll down to disable and select disable.

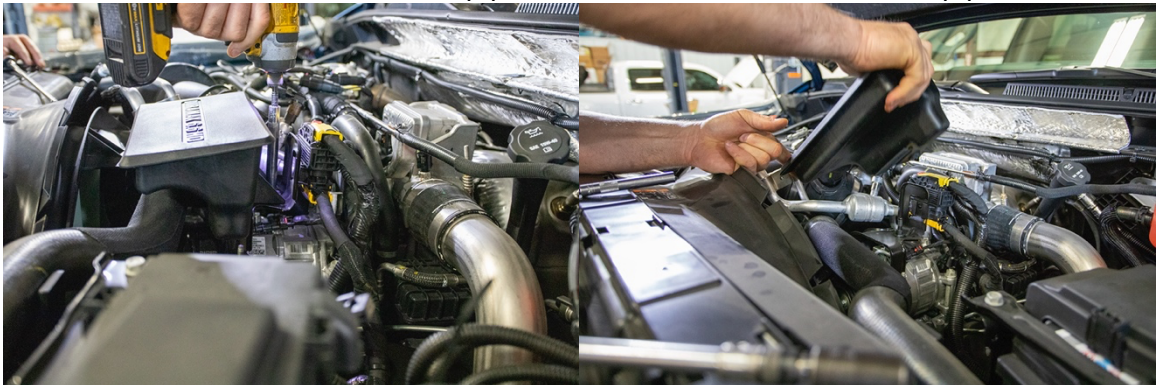


f. After making the selection, verify air filter life shows disabled.

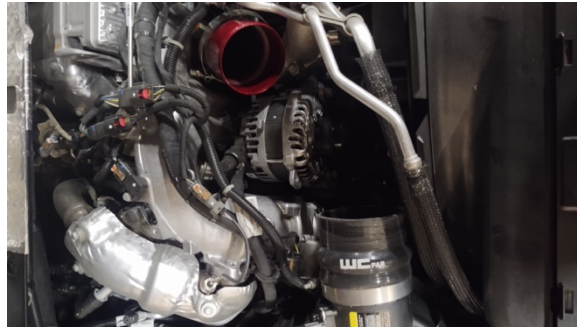


g. Now you are ready to install the intake system.

2. Disconnect the batteries.
3. Remove the stock intake resonator pipe or the turbo horn to intake box pipe.



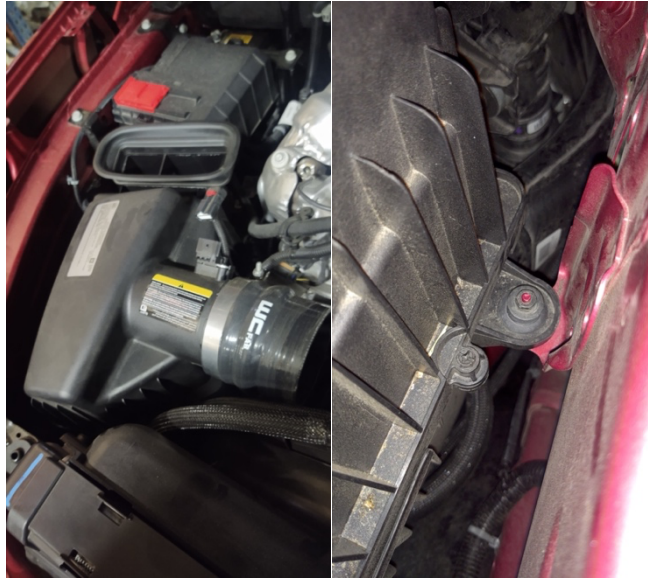




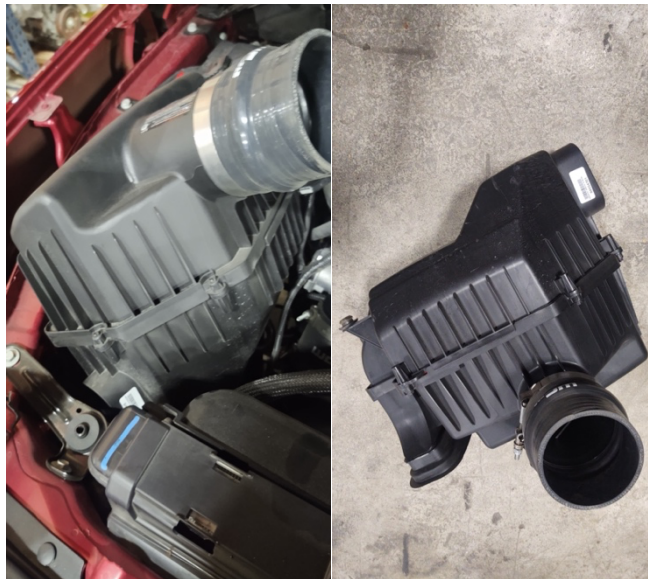
4. Disconnect the MAF sensor. Remove the plastic tree clip holding the wiring to the intake box.



5. Remove the 10mm nut holding the factory intake box to the truck.



6. Remove the factory intake box by lifting it up. There are two rubber grommets at the back of the intake that pop out.



7. Remove the 3 rubber grommets from the factory box. There are 2 towards the back and 1 where the nut was in the previous step.

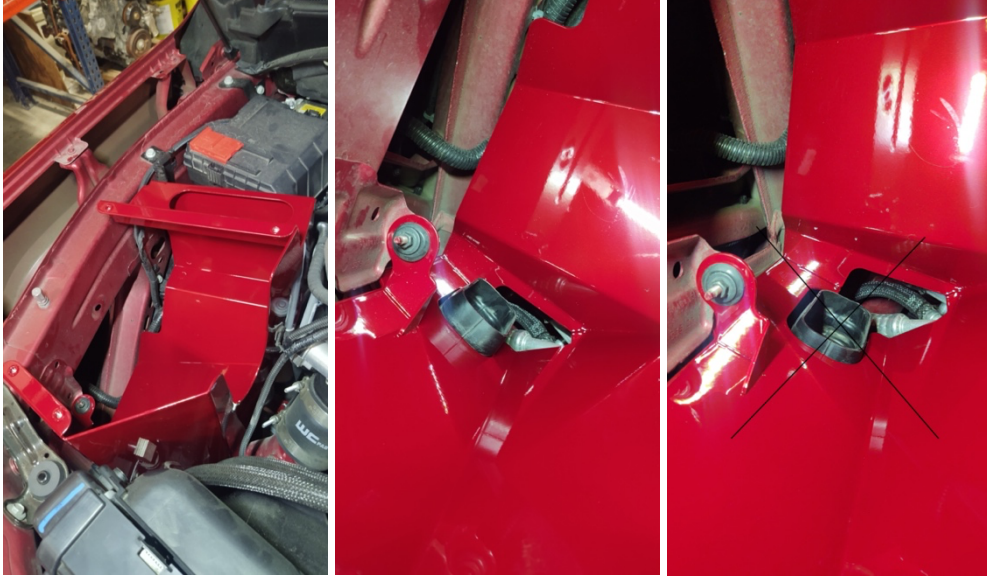


8. Transfer the grommets to the proper locations. The two pictured should go into the holes in the truck.

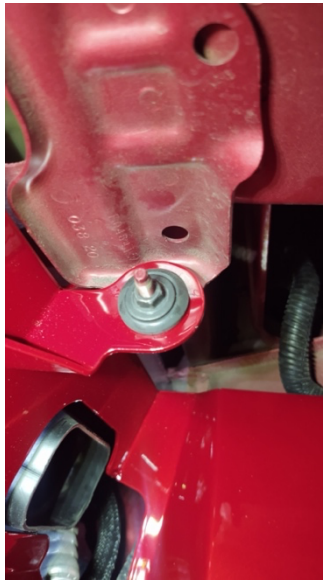




9. Install the lower half of the new intake box into the truck. If needed, apply a small amount of grease to the grommets to allow them to seat easier. Make sure to pull the plastic ram air tube into the box and the rib on tube will hold itself into the new box. Ram air tube is towards the front of the truck and runs up to the left of the hood latch.



10. Reinstall the 10mm nut to hold the new intake box in.





11. Install the large weather stripping into the top hole that provides a seal between the hood and the intake box.



12. You will need to cut the smaller weather stripping evenly in half. Take one half and install it onto the lower half of the box. Push firmly over the edge of the box and trim any excess once you reach the end of the cut out gasket area. Do the same on the other half of the intake box.



13. Remove the MAF sensor from the factory box. Install it into the new intake pipe with supplied bolts.



14. Install the intake tube to the horn with the 4" boot and clamps.

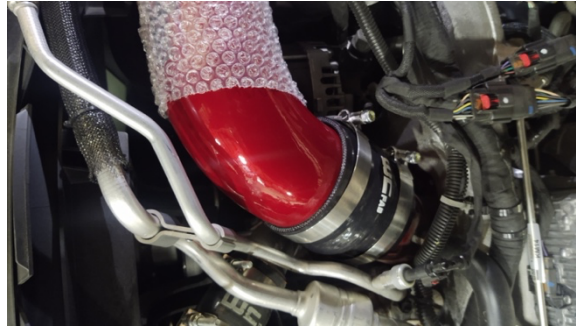


15. Take brake clean on a rag and clean the air filter element where the clamp will contact the filter and the filter contacts the pipe only. This will remove the silicone slippery coating allowing it to hold to the intake pipe better.

16. Install the new air filter and pre filter onto the intake tube.



17. Tighten the clamps holding the pipe to the horn after clocking to the correct position.



18. Install the upper half of the intake box using the 4 supplied bolts.



19. Reconnect the batteries.



Any Questions, Comments, or Feedback?

Reach us by Email- [Sales@wcfab.com](mailto:Sales@wcfab.com)

Or the shop phone- 630-277-8239

Thank you for purchasing from Wehrli Custom Fabrication!