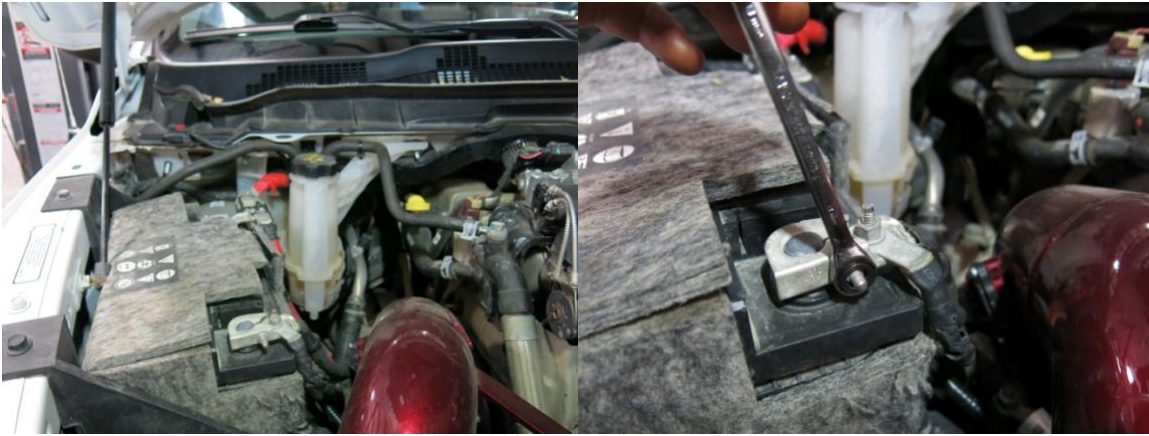




2013-2018 Dodge Coolant Tank

Covers installation of PN: WCF100628

1. Disconnect the batteries.



2. Drain coolant. This is at the driver's side of the radiator at the bottom. Unbolt the power steering reservoir and push to the side. You can then reach down to it.

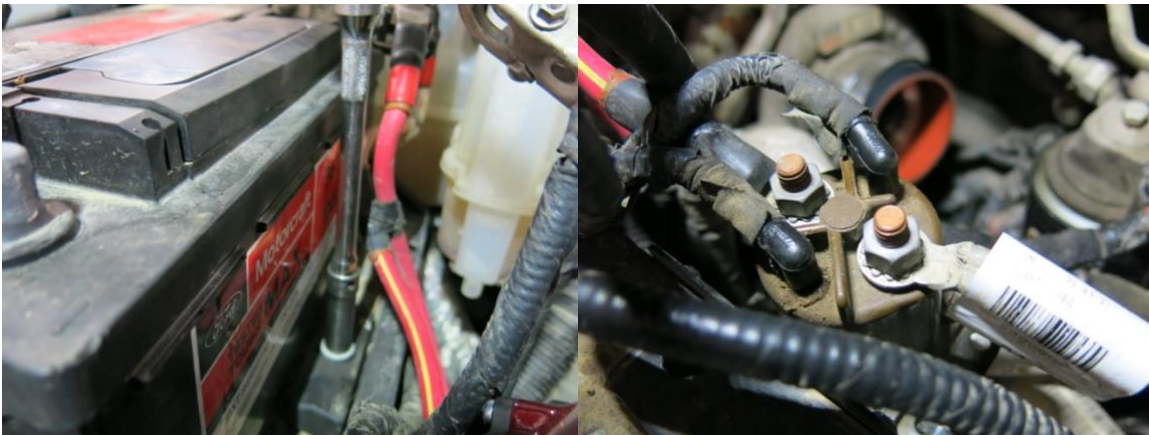


3. Remove the air intake.

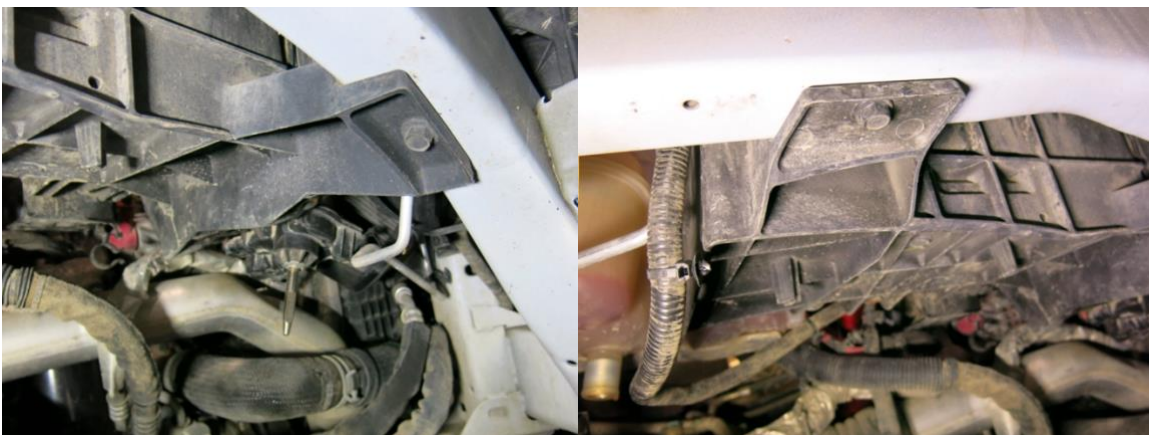
4. Remove the passenger fender liner.



5. Remove the battery. Disconnect the grid heater relays.



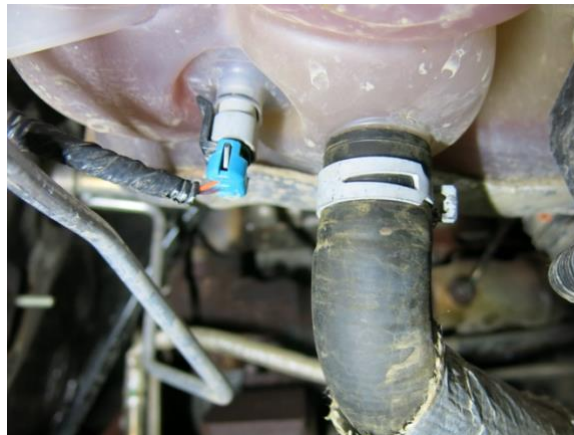
6. Unbolt the battery tray (six 13 mm bolts).



7. Remove the coolant tank top lines.



8. Remove coolant tank lower hose and disconnect level sensor plug (three 10 mm nuts).



9. Remove the coolant tank nuts.

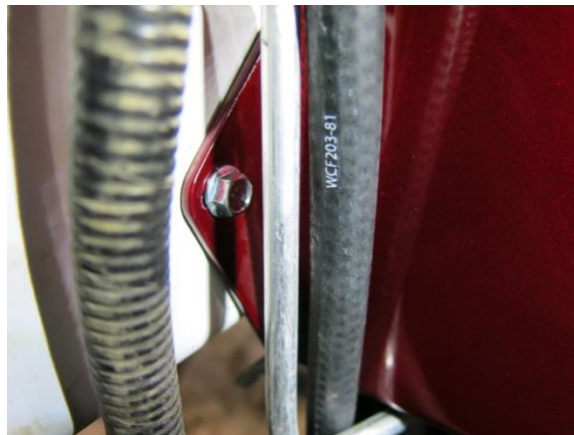


10. Remove the coolant tank.

11. Install the overflow fitting and level sensor on the new coolant tank. Ensure arrow on sensor is pointed up. Use Teflon paste on sensor threads to help with sealing.



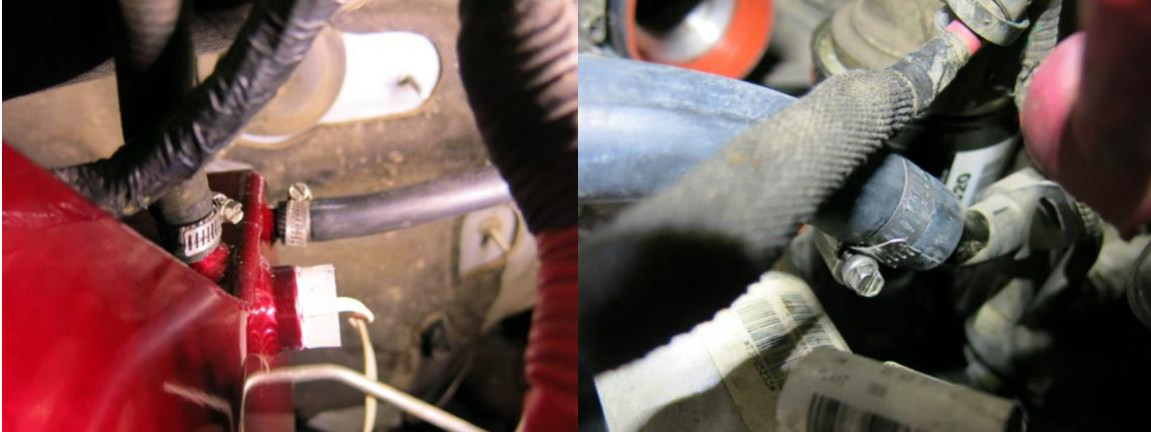
12. Install new tank. Use lower existing stud & new 6mm bolt in threaded hole in fender.



13. Connect the level sensor.
14. Use the new heater hose lines for the side and bottom lines.



15. Use the existing hose for the upper coolant hose.



16. Install the overflow hose and route it down into the fender area.



17. Reinstall battery tray, battery, intake, and fender liner.

18. Fill system with coolant and reconnect battery.

19. Start truck and check for leaks. Keep some coolant handy to top off system in the first week of driving as trapped air bubbles work out of the system.

Any Questions, Comments, or Feedback?

Reach us by Email- Sales@wcfab.com

Or the shop phone- 630-277-8239

Thank you for purchasing from Wehrli Custom Fabrication!