

INSTALLATION MANUAL

TITANIUM SERIES



**ALL 1/2" FUEL PORTS
AND FUEL LINE!**

APPLICATION:

T C10 095G (95GPH @ 8-10psi)
T C10 150G (150GPH @ 8-10psi)

Duramax 2500 & 3500

2001-2010

****Note: Cab and Chassis
may require modifications****



PICKUP

FASS[®]
Diesel Fuel Systems
ENGINEERED EXCELLENCE

Dear Valued Customer,

“Made in the USA” is not just a slogan at FASS; it’s what we live by! FASS is not only assembled in the USA but 98%+ of the FASS product is manufactured in the USA, helping to employ Americans and strengthen America. At FASS, we scrutinize our suppliers and demand the highest quality American-made components. However, this does come at a price, which is one of the main reasons FASS products are more expensive than the competition. Remember price does not dictate quality but quality does dictate price! Here at FASS, we believe it’s worth the commitment and will continue this practice to support America! Our competition is doing exactly the opposite by using foreign-made components.

Building extremely “High-Quality” fuel products is our business. We concentrate all of our efforts in this arena. No one else is as specialized as FASS in what we do! This is one of the ingredients to insure you are running with the “Highest-Quality” fuel system in the world! We have implemented very rigorous testing procedures to provide the “Highest Quality” we have become known for. Not only is our product superior, but customer satisfaction is #1 at FASS. It is our goal to provide the best service possible. Our confidence is evident in the products we make as each product is backed by an industry leading warranty!

Our R & D department, in conjunction with our Dealer Support department, is continually searching for ways to improve quality, expand our product line, and provide superb support to our network of dealers so our customers’ needs and expectations will be exceeded.

To help insure you receive the proper system and customer support at the local level, FASS has a VIP and Authorized Dealer network representing FASS products. This is one reason you must purchase through a dealer to comply with our warranty policies. **If you do not, there is no warranty!** We recommend you go to www.FASSride.com, click “Find A Dealer”, put in their ZIP code, select the type of dealer, and see if the company you purchased from is listed. If they are not, put their phone number in the field below the ZIP code field to see if they are listed. Below these two fields is a list of “Terminated/Unauthorized” dealers. You may want to review this list. If the company is not listed or is on the “Terminated/Unauthorized” list, we suggest you return the product immediately to that dealer and call FASS. We’ll recommend you to the nearest dealer.

VERY IMPORTANT: Make sure to fill out your product registration form and return the original form to FASS Fuel Systems within 30 days of purchase accompanied with a copy of the purchase receipt. Complying with these guidelines will qualify you for the Extended Warranty!

See the Owner’s Manual online at www.FASSride.com for full Limitation of Warranty. In the event that the buyer does not agree with this agreement: the buyer may promptly return this product, in a new and unused condition, with a dated receipt, to the place of purchase within thirty (30) days from date of purchase for a full refund less shipping.

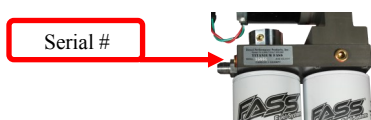
The installation of this product indicates that the buyer has read and understands the Limitation of Warranty agreement and accepts its terms and conditions.

!WARNINGS!

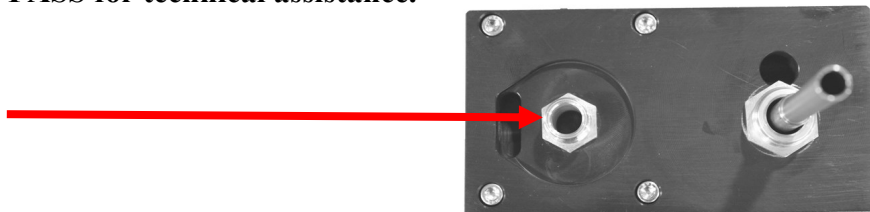
- Read all instructions before starting installation of this product!
- Installing the improper FASS Pump can cause *severe* engine damage.

FASS	Recommended Application
T C10 095G	Duramax 2001-2010 with stock - moderate horse power modifications
T C10 150G	Duramax 2001-2010 with moderate - extreme horsepower modifications
Note: Because of the higher fuel flow these systems have to offer, you may encounter problems with the stock fuel module. FASS can solve this with a Suction Tube Kit.	

- Secure vehicle from ROLLING!
- Cab and Chassis may require modifications
- Consult vehicle's manufacturers' instructions concerning the electrical system before attempting any electrical connections.
- Be sure that the serial # on this installation manual matches that of the outside of the box.



- Flush and clean all brass fittings and fuel line from debris.
- Keep debris from entering the internals of the system during installation. Getting debris in the water separator nipple can lock up the motor. If the motor does lock up from debris call FASS for technical assistance.



- Wear safety glasses when operating power tools such as drills and grinders or when using a punch or chisel.
- Properly secure lines to prevent chaffing.

INSTALLATION MANUAL

Follow these steps to ensure a simple installation of your new FASS TITANIUM FUEL SYSTEM

1. *Read the installation manual completely before attempting installation. The installation of this product indicates that the buyer has read and understands the limitations of the FASS manufacturers warranty agreement and accepts the responsibility of its terms and conditions.*
2. Inventory the package components. Notify the place of purchase immediately of any parts missing or damaged.
3. The installation recommendations contained herein are guidelines. Use good judgment and take into consideration your vehicles' accessories.
4. For best results in accuracy and efficiency (due to training, communication, and our relationship with our dealer network), we recommend a ViP FASS dealer for the installation. They are prepared to install the FASS fuel pumps with the most efficiency. If a situation/problem arises during the installation, they are the most prepared for that situation/problem. DPPI is not responsible for any installation mistakes.
5. If you have any questions or concerns that can not be addressed with your dealer, email or call FASS.
6. If any installation procedure is uncertain, contact FASS technical support.

Email techsupport@FASSride.com with the following information:

- Your Name, address and daytime phone number
- Model **(T C10 095G or T C10 150G)**
- Serial Number
- Vin Number of Vehicle
- Date of purchase
- Nature of Your Concern

Serial # Found Here....

Call customer service; **636-433-5410** with the following information:

- Model **(T C10 095G or T C10 150G)**
- Serial Number
- Vin Number of Vehicle
- Date of purchase



95 OR 150 GPH
8-10 PSI (APPROXIMATELY)

“H”
Coolant Heater

“E”
To Engine

‘R’
Fuel Return to Tank

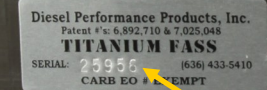
2nd
Electric Heater Port

‘T’
Fuel Inlet

Electric Heater Port

‘G’
Fuel Pressure

Serial Number Location



- Step 1: Install Electrical Harness
- Step 2: Prepare Suction and Return Lines
- Step 3: Mount Fuel System
- Step 4: Install Fuel Line
- Step 5: Check Installation

CONTENTS

Owners Manual Available
for Download at
www.FASSride.com



MP-9025



WH-1006



PBR-2001

PFB-2002



FL-1002 x14'

MOUNTING PACKAGE CONTENTS



PL-1005



QD-1002



HC-1003



Ring Terminal



RM-1001



10-301



10-300



PLB-1212



HC-1001



46260



46044



4 Hex Bolt 3/8" -16x 1 1/2"



3 Hex Bolt 1/4" -20x1 3/4"



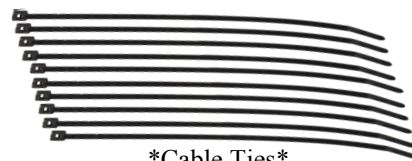
4 Locking Nut 3/8"



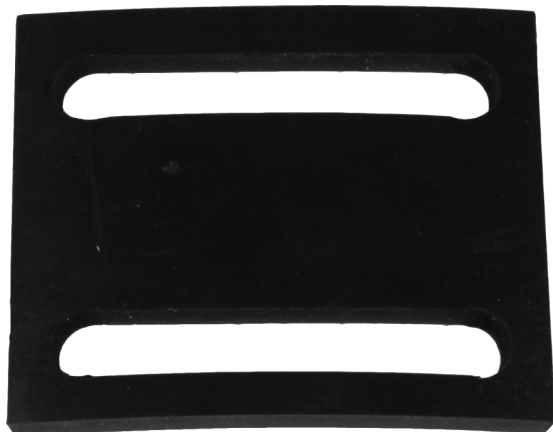
3 WA-1001D



4 3/8" Washers



Cable Ties



RS-2002



RS-2001

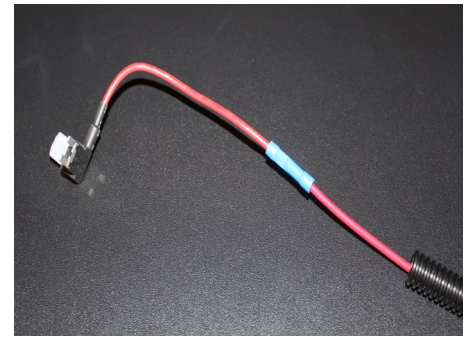
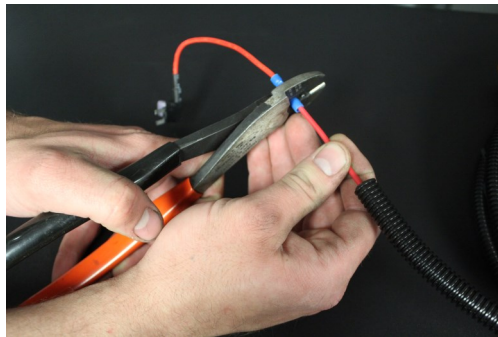
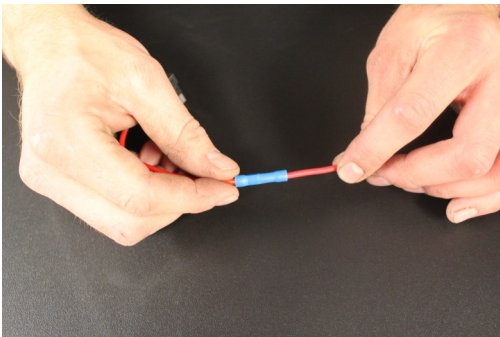
STEP 1: INSTALL ELECTRICAL HARNESS

The installation of the electrical harness is done first, allowing power to be applied to the pump for lubrication purposes later in the installation.

- A. Using wire stripping tool remove excess insulation off the add-a-fuse and the WH-1006.



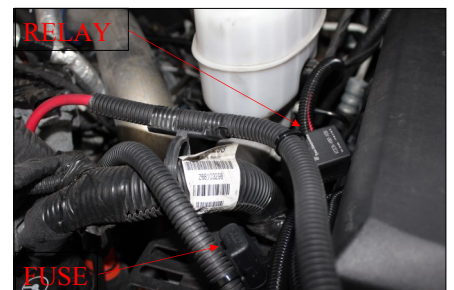
- B. Place wire from 46044 and WH-1006 into butt connector. Using crimping tool connect 46044 and WH-1006 with butt connector. Install 46260 to 46044 bottom slot (opening that is near the spade).



- C. Crimp the ring terminals to the red and green wires of the WH-1006 Wire Harness. Attach red wire to the positive terminal of the battery and the green terminal to the negative terminal. **The use of a corrosion preventative on electrical connections is recommended.**



- D. Secure relay and fuse in an upright position, as shown, to prevent moisture from entering. Di-electric grease may be applied to prevent corrosion.

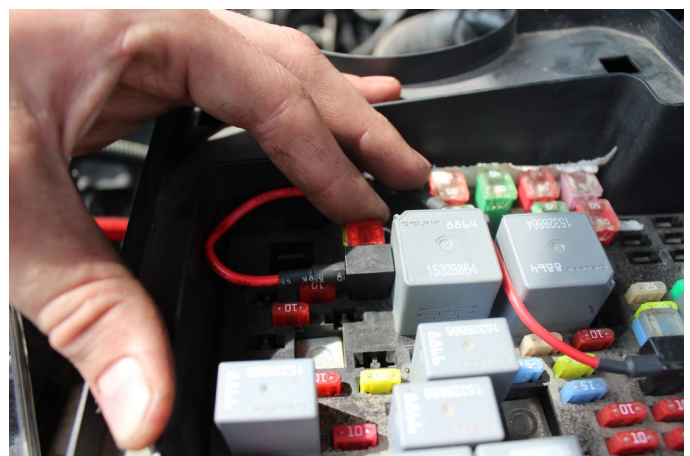
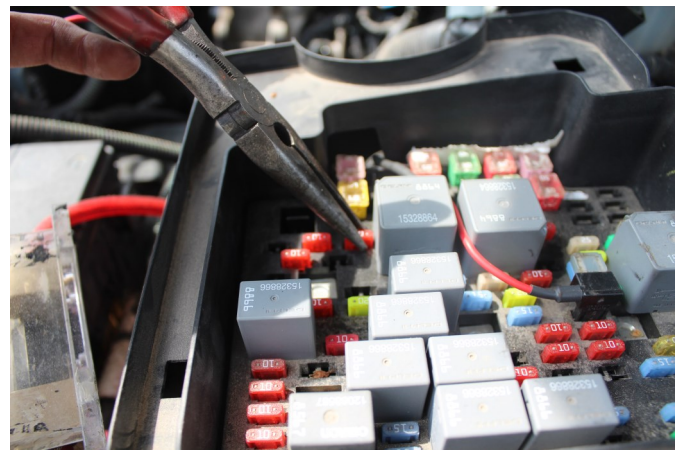
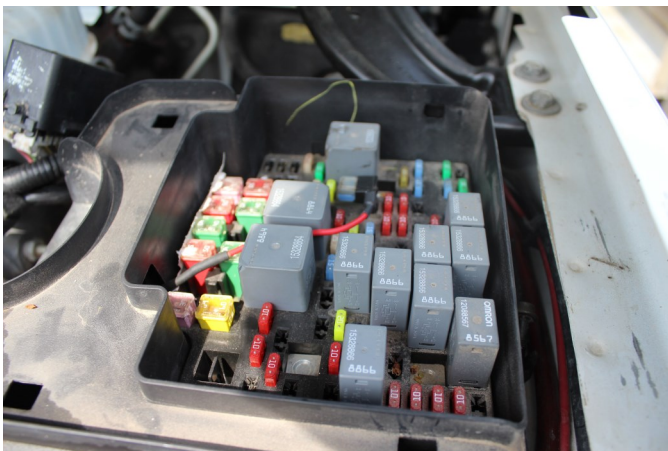


STEP 1: INSTALL ELECTRICAL HARNESS

E. If fuse panel is located in the cab it will be necessary to guide the single red wire from the relay through the fire wall grommet to access the fuse panel.



F. Locate fuse box under hood and select ignition hot fuse. Remove fuse and put Add-A-Fuse in place. Install fuse previously removed. **The use of a corrosion preventative on electrical connections is recommended.**



G. Route WH-1006 wire harness along frame rail to mounting location of pump. **Completion of this step will be addressed in the Mounting Step 3.**

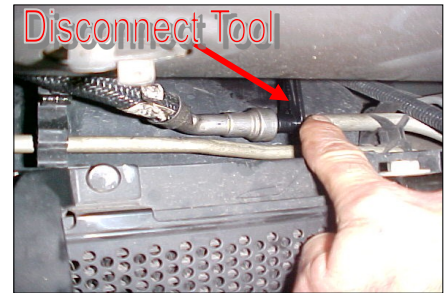
STEP 2: PREPARE SUCTION & RETURN LINES

Some of the photo's are of a different application, procedures are the same.

- A. Remove the 3 bolts holding the factory Return Fuel cooler to the mounting bracket. The fuel cooler is located in front of the fuel tank.



- B. Using a fuel line disconnect tool, disconnect the factory suction line located above the fuel cooler. Place the disconnect tool around the fuel tube and slide the tool under the fuel line connection to release the fuel line.



NOTE: Hose clamps are not recommended for push lock fittings. They will hold up to 300psi! Use oil on fittings and inside fuel line when installing Push-Lok fittings

- C. Using oil, insert PLB-1212 into one end of the provided FL-1002 fuel line. Feed line over frame to the stock fuel connection.



- D. Push the PLB-1212 into the factory suction line until you hear a click and the tabs are locked in place.



- E. Using an HC-1001 hose clamp, insert the QD-1002 into the other end of the provided FL-1002 fuel line and secure. Loop this end over the frame to the factory steel fuel line disconnected in Step 2b. Oil the rings inside the QD-1002 and slide over the line until you hear a click. **Do not cut the line at this time.**



STEP 2: PREPARE SUCTION & RETURN LINES

- F. Some filler necks have the integrated over-flow tube. **If your filler neck does not have a separate over-flow tube, you have an integrated filler neck.** Mark location for the Return manifold on the rubber over-flow tube. Loosen the clamps on both ends of the filler neck and remove screws from fuel receptacle. Remove filler neck assembly. Slide rubber outer hose down exposing filler tube. At mark, cut hose. **Make sure there is enough tube on each side of the cut to insert the RM-1001 and to place the hose clamps.** Slide top half over filler tube with HC-1003 clamp. Slide RM-1001 Return Manifold over the filler tube and into over-flow hose with the small junction pipe pointing toward the fender. Slide another HC-1003 clamp and bottom hose over filler tube and secure. Re-install filler neck assembly.



OR

Prepare FASS return line by cutting rubber junction connecting the two halves of the filler neck. Position RM-1001 with the 1/2" junction pipe aiming to outside of bed. Clamp rubber and RM-1001 using both HC-1003's.

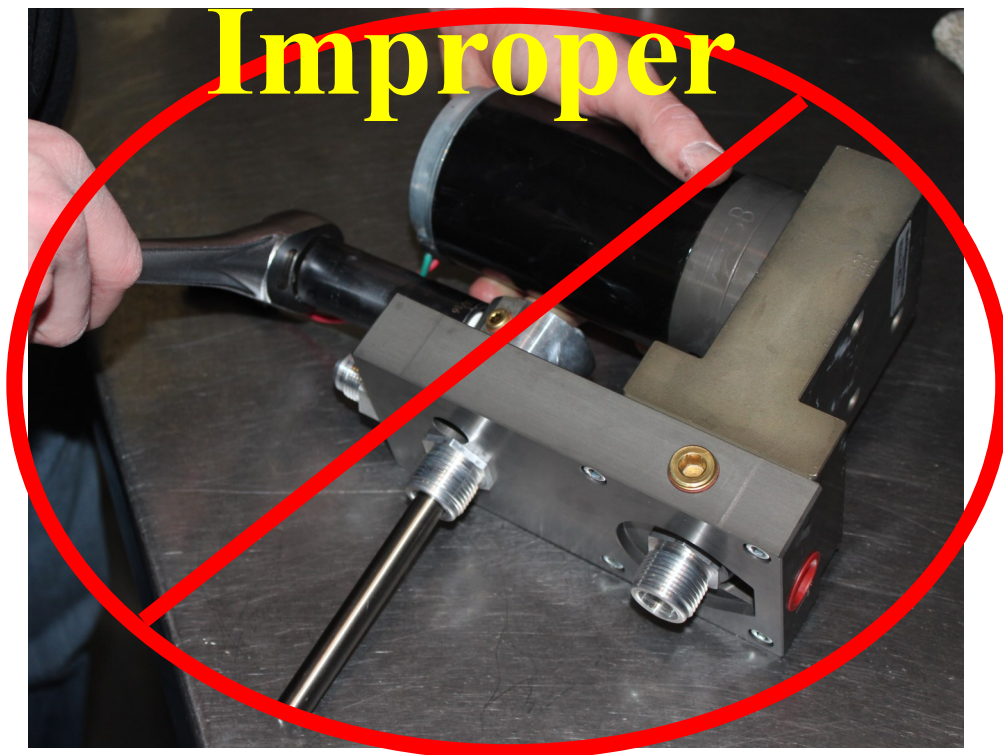
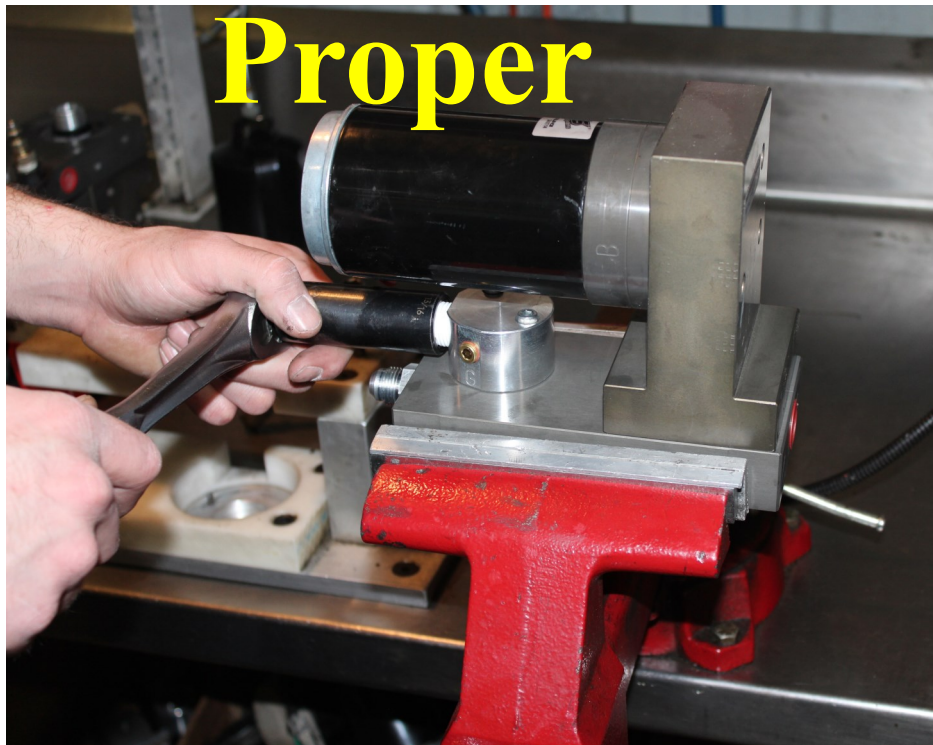


- G. Position RM-1001 with the junction pipe aiming to outside of bed. Connect rubber and RM-1001 using both HC-1003's.



NOTE

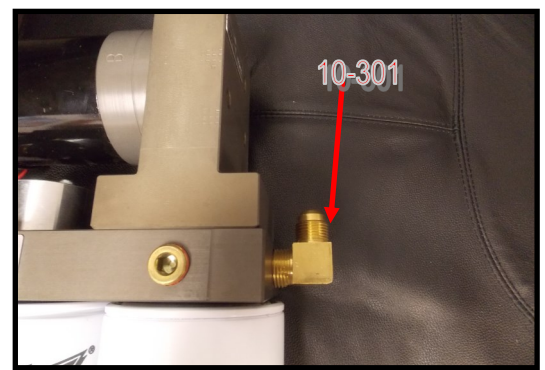
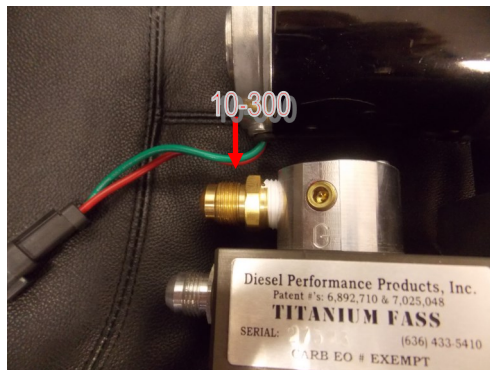
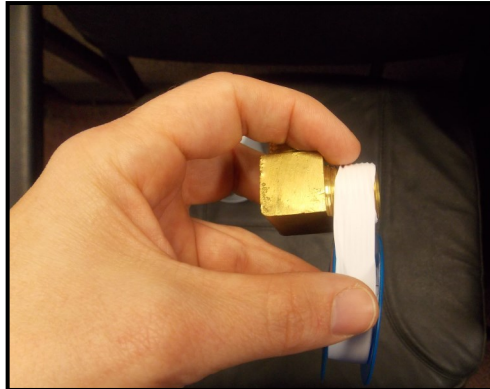
ATTENTION: While installing fittings into Titanium pump
DO NOT Apply side pressure to draw
tube of pump



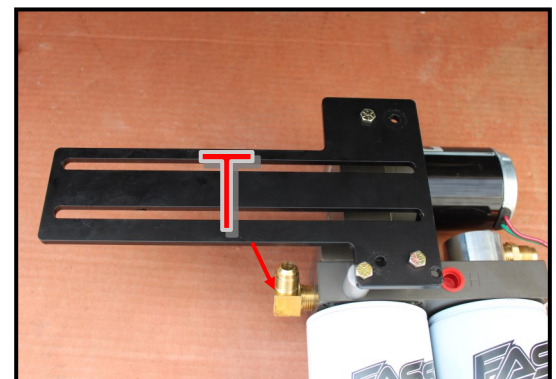
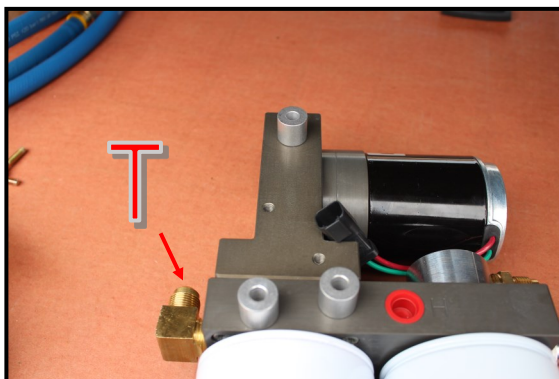
STEP 3: MOUNT FUEL SYSTEM

NOTE: Before installing fittings make sure to inspect for burs or flare imperfections. When cutting fuel line make sure to blow out line to keep debris from moving forward.

- A. Using thread tape, install the 10-300 into “E” and the 10-301 into the “T” port (on opposite end). Torque to 40 lb./ft.² **Note: Do Not Put Thread Tape on Flare of Fitting ***The use of thread sealant is not recommended*****

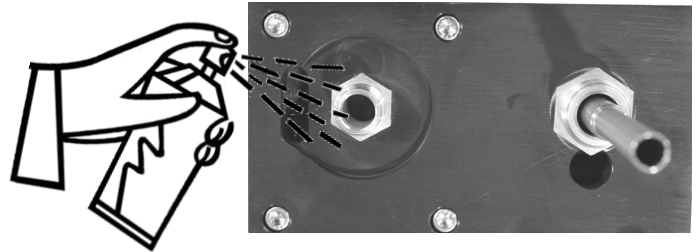


- B. For fitting purposes. Secure PBR-2001 to pump assembly lightly with (3) 1/4"-20x1 3/4 bolts and (3) WA-1001D. This will assembly will be used in future steps for correct fitting of brackets. (**Note: Bracket maybe flipped to accommodate your application.**)



STEP 3: MOUNT FUEL SYSTEM

- C. Connect female plug of the FASS harness into pump. Turn key to “on”. With pump operating (you may have to bump the starter), turn pump over, liberally spray WD-40 (or equivalent) into water separator nipple lubricating Gerotor.



- D. Unbolt driver side front bed bolt from bed retain bolt for future use. Align RS-2001 with PFB-2002.



- E. Secure PFB-2002 and RS-2001 with bed bolt in previous step.

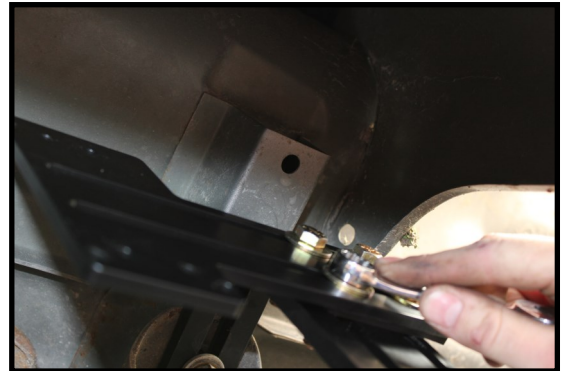
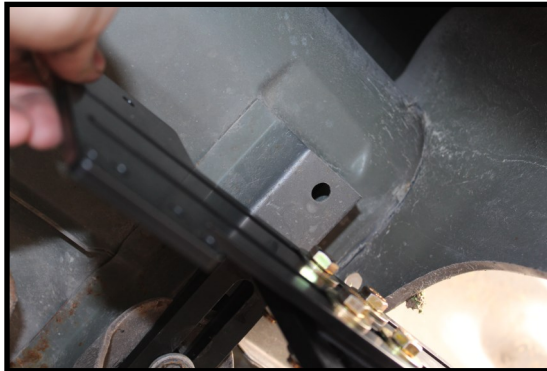
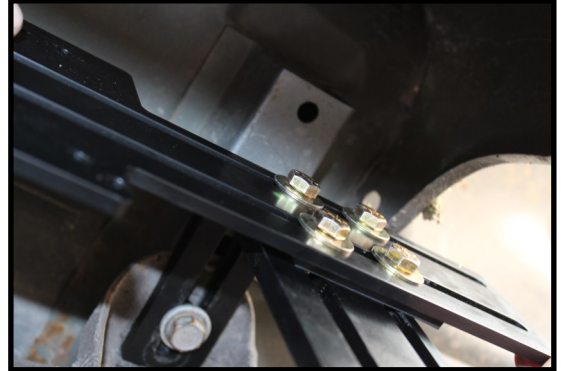
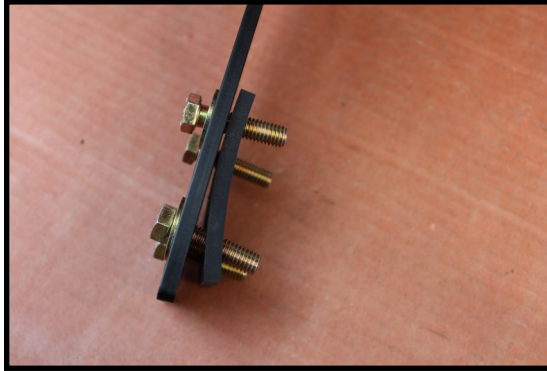


- F. Position the PBR-2001 to the PFB-2002 pump assembly at the mounting location and check for fit. Once location is established mark location for mounting in next step.

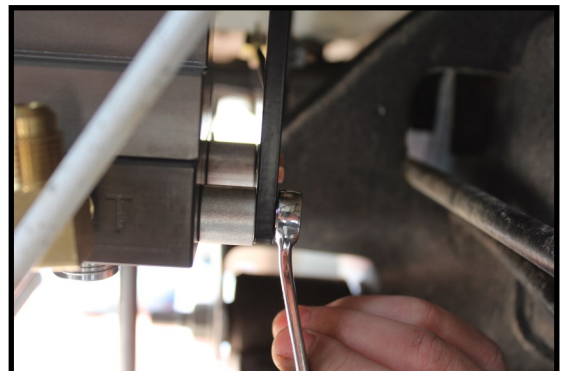
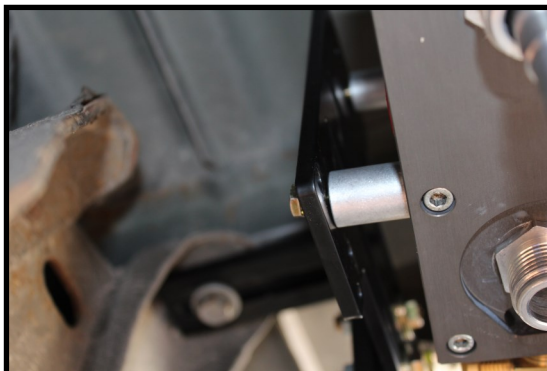


STEP 3: MOUNT FUEL SYSTEM

- G. Assemble the FASS pump bracket PBR-2001 using the RS-2002 spacer between PFB-2002 and PBR-2001 bracket with 4-3/8 bolts, nuts, and washers. **Note: Torque bolts not flange nut.**



- H. Once secure use 3-1 1/2 bolts and 3-WA-1001D spacers to mount the pump to the bracket.



STEP 3: MOUNT FUEL SYSTEM

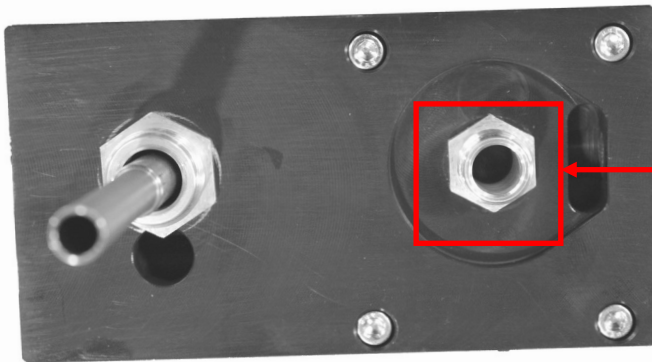
- I. Apply motor oil to gasket located on filters. Attach to system and hand tighten.



Fuel Filter –Install FWS-3003 on side of pump with draw tube in the middle of the filter nipple.



Water Separator Filter –Install FS-1001 on water separator nipple without the draw tube. Make sure to insert O-Ring provided on nipple.

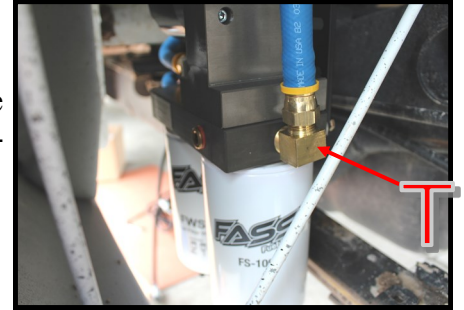


Note: O-Ring must be put back on suction side of pump. Failure to do so can result in priming issues, cavitation, or pressure losses.

STEP 4: INSTALL FUEL LINES

Do Not use sealant on AN (male flare) fittings. Only use sealant on threads installed into pump assembly.

- A. Route suction line from the factory module to the 'T' port of the FASS pump. Cut FL-1002 to length. (measure twice cut once) Insert PL-1005 using oil. Attach to 10-301. Torque to 18 ft./lbs.



- B. Measure from the factory feed connection from Step 2d to the 'E' port of the FASS system. Cut and insert PL-1005. Connect to the 10-300 in the 'E' port of the FASS system. Torque to 18 ft./lbs.



- C. Using oil, insert a PL-1005 into the remaining fuel line. Connect to the 'R' port fitting on the FASS system. Torque to 18 ft./lbs. Route this line in a ***gentle bend*** to the Return Manifold. Slide over return tube and secure with HC-1001 clamp.



- E. Reattach the 3 bolts holding the fuel cooler to the mounting bracket.



Note: Secure all fuel lines with cable ties. Cable ties are an economical way to prevent the possibility of problems occurring!

STEP 5: REVIEW INSTALLATION

To assist with priming your FASS pump crack the FWS-3003. Put power to the FASS pump to activate the pump. When the tone of the pump changes you can tighten up the fuel filter. If you need a video of the priming process go to www.FASSride.com.



Note: The Red Plastic Plugs located in the “H” ports can stay in place fuel will not flow through these ports. Coolant can be plumbed into these ports to heat the fuel in the Winter months.

STEP 5: REVIEW INSTALLATION

- Blow out any open lines/cover any open ports
- Bolts and fasteners properly tightened?
- Electrical harness and fuel lines secured and properly tightened? Reconnect the battery.
- Has the system been primed?
 1. Turn key to the ignition position, turning on the FASS pump for 15 sec..
 2. Crank engine and allow to run for at least 1 minute.
- Check for leaks.
- Start the engine
- Recheck all fluid and filter connections for leaks
- This pump comes with a 1 Year Manufacturer's Warranty based on the date it has been manufactured. To receive your extended Lifetime Warranty, you have 30 days from date of purchase to send the completed warranty information along with a copy of the purchase receipt in to Diesel Performance Products, Inc. Att: Warranty 16240 Hwy O Suite B Marthasville, MO 63357

LIMITATION OF LIFETIME WARRANTY

Disclaimer: To help insure you receive the proper system and customer support at the local level, FASS has a VIP and Authorized Dealer network representing FASS products. This is one reason you must purchase through a dealer to comply with our warranty policies. If you do not, there is no warranty! We recommend you go to www.FASSride.com, click "Find a Dealer", put in their ZIP code, select the type of dealer, and see if the company you purchased from is listed. If they are not, put their phone number in the field below the ZIP code field to see if they are listed. Below these two fields is a list of "Terminated/Unauthorized" dealers. You may want to review this list. If the company is not listed or is on the "Terminated/Unauthorized" list, we suggest you return the product immediately to that dealer and call FASS. We'll recommend you to the nearest dealer.

Diesel Performance Products, Inc. (hereafter "SELLER") gives Limited Warranty as to description, quality, merchantability, fitness for any product's purpose, productiveness, or any other matter of SELLER'S product sold herewith. The SELLER shall be in no way responsible for the product's open use and service and the BUYER hereby waives all rights other than those expressly written herein. This Warranty shall not be extended or varied except by a written instrument signed by SELLER and BUYER.

When MANUFACTURER receives the "ORIGINAL" PRODUCT REGISTRATION form with a copy of the "BILL OF SALE/SALES RECEIPT" within 30 days of the sale, then the following applies! The Warranty will then and only then be validated to that of which typically accompanies your unit for your specific application from the date of sale or for recommended service life and limited solely to the original purchaser and/or vehicle and parts contained within the product's kit. This warranty does not cover normal wear on consumable items such as but not limited to filters, fuel line, wire harness & etc. The warranty does not cover seized gears due to lack of filtration. Warranty is voided if used with other than diesel fuel. Returned items will arrive prepaid to the place of purchase. Diesel Performance Products, Inc. will repair, without cost, any product found to be defective during the warranty period; parts only, or at its option, will replace such products in exchange for the product. Repair or replacements are warranted for the remainder of the original warranty period. All Warranty claims are subject to approval by Diesel Performance Products, Inc.

A Return Material Authorization (RMA) number must be obtained before any product is to be returned to Diesel Performance Products, Inc. for warranty consideration, repair or product return. Requests for product returns must be offset by an equal value order. Return parts must be completed and in resalable condition. No returns after 30 days.

The following information is required to obtain a RMA number before returning product:

Your Name, Address, and Phone Number's
Model and Serial Number (Not Motor Number) Example: Model HD Series, Serial: 00125966
VIN Number of Vehicle
Date of Purchase
Nature of Problem

RMA and Product Serial Number must be on all paperwork and correspondence. Failure to obtain the required information or paperwork will result in \$25.00/item penalty and delay or denial of any warranty claim.

Under no circumstances shall the SELLER and/or MANUFACTURER be liable for any labor charged or travel time incurred in diagnosis for defects, removal, or reinstallation of this product, or any other contingent expenses.

Under no circumstances shall the SELLER and/or MANUFACTURER be liable for any damage or expenses insured by reason of the use or sale of any such equipment. This warranty does not apply to products which Diesel Performance Products, Inc. has determined to have been misused or abused, improperly maintained by the user, or where the malfunction or defect can be attributed to the use of non-genuine Diesel Performance Products, Inc. parts.

IN THE EVENT THAT THE BUYER DOES NOT AGREE WITH THIS AGREEMENT: THE BUYER MAY PROMPTLY RETURN THIS PRODUCT, IN A NEW AND UNUSED CONDITION, WITH A DATED PROOF OF PURCHASE, TO THE PLACE OF PURCHASE WITHIN THIRTY (30) DAYS FROM DATE OF PURCHASE FOR A FULL REFUND LESS SHIPPING.

THE INSTALLATION OF THIS PRODUCT INDICATES THAT THE BUYER HAS READ AND UNDERSTANDS THIS AGREEMENT AND ACCEPTS ITS TERMS AND CONDITIONS.

Technical Support:

Diesel Performance Products, Inc.
16240 State Hwy O Suite B
Marthasville, MO 63357
636-433-5410

NOTES