

# INSTALL INSTRUCTIONS FOR 75-5219

## BEFORE YOU START

Kit may not fit with the following Aftermarket Parts installed:

Body Lift or Lowering Kit

Custom Hood

Aftermarket Turbocharger and/or Throttle Body Spacer

- Please read the entire product guide before proceeding.
- Ensure all parts are present.
- If you are missing any of the components, call our customer support at (909) 947-0015.
- Do not work on your vehicle while the engine is hot.
- Make sure the engine is turned off and the vehicle is in Park or the Parking Brake is set.

## REQUIRED TOOLS

turned on and the vehicle is  
in Park or the Parking Brake  
is set.

**IMPORTANT:** Failure to disconnect the battery for a minimum of 2 hours may cause the Check Engine Light to illuminate upon completion of the installation or subsequent operation. **DO NOT SKIP THIS STEP!**

### **STEP 1:**

First start by removing the intake scoop. You will need a **T27** Torx to do so.



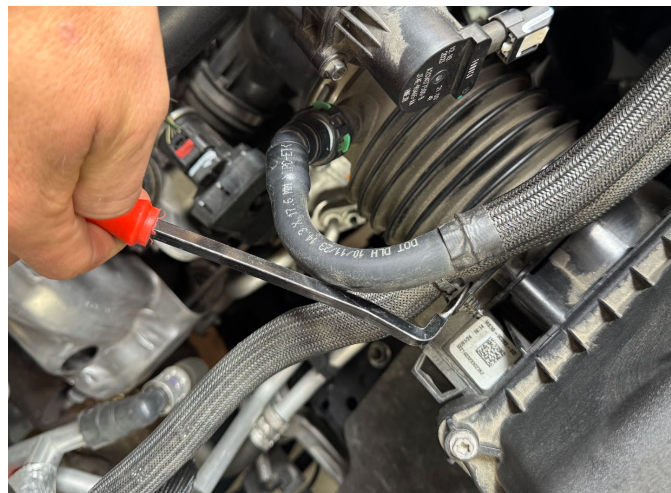
## STEP 2:

Remove the bolt holding the air box to the vehicle. This is located on the passenger fender side of the stock air box. You will need an **8mm** socket for this.



## STEP 3:

Take a body panel removal tool to pop out the plastic pins holding the wiring harness to the air box.



**STEP 4:**

With an 8mm socket/5/16th nut driver or a flat head screwdriver, loosen the hose clamp on the rear intake tube.

**STEP 5:**

Disconnect the quick-connect fitting just to the right of the air box. To disconnect it, pull out the green latch from the fitting.



**STEP 6:**

Lift up the stock intake air box in order to gain access to the IAT Sensor. Then push down on the clip and disconnect it.

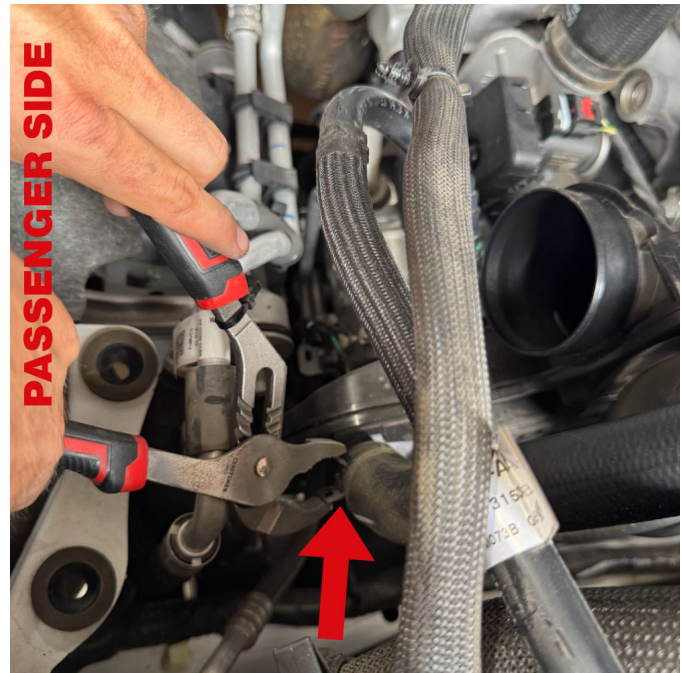
**STEP 7:**

Time to remove the air box from the engine bay.



**STEP 8:**

Take a channel lock to disconnect the hose clamp just next to the intake tube.

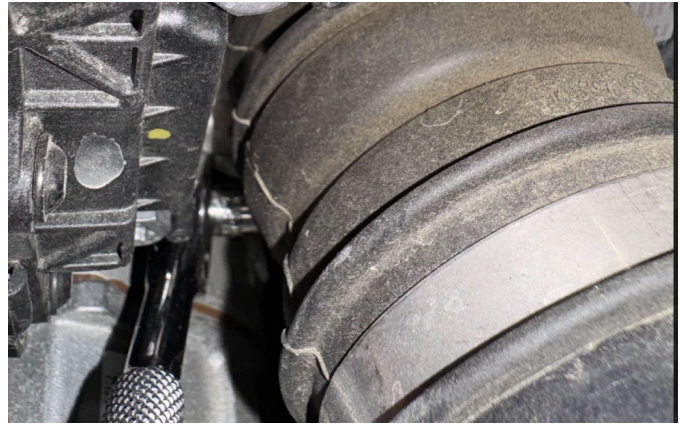
**STEP 9:**

Disconnect the two quick connect hoses.

**STEP 10:**

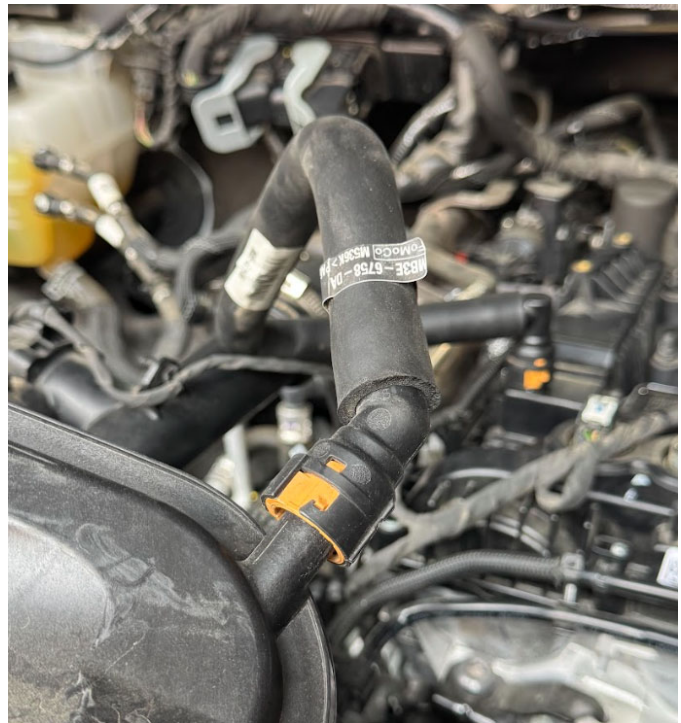
Take a **7mm** socket and remove the hose clamp located at the turbo. Then

pull the tube assembly off of the turbo.



### STEP 11A:

Before you remove the entire assembly, you will have to remove one more line from that tube assembly. In order to remove this PCV line, please use the provided tools (22) to slide under the fitting, then spin until the line pops off. **Please see next slide.**



**STEP 11B:****STEP 12:**

With everything disconnected, go ahead and fully remove the intake tube assembly from the engine bay.

**STEP 13: IMPORTANT**

If your 2.3L Ecoboost stock intake system has a Green Quick Connect, you will need to thread in the fitting provided into the S&B intake tube.

If your 2.3L Ecoboost does not have a Green Quick Connect, you can just close off the port by threading in the provided NPT plug.



#### **STEP 14:**

Install the IAT Sensor grommet on the intake tube.



**STEP 15:**

Install the stock IAT Sensor into the grommet. Please ensure you twist the sensor upon install, making sure it fully clips in.

**STEP 16:**

Install the quick connect assembly (14) onto the intake tube. Please ensure that the included gasket (12) is installed between the intake tube and assembly.



**STEP 17:**

Install the other Quick Connect Fitting (13) onto the intake tube, located at the corner of the tube.

**STEP 18:**

Install the tube seal (9) onto the S&B air box (1).



## STEP 19:

Install the Silicone Scoop (11) onto the S&B air box.



## STEP 20: OPTIONAL

Install the fender seal (8) onto the S&B air box.



## STEP 21:

Install the air filter (2) into the S&B air box. We recommend installing it inside the box vertically, then turning it on its side to line up with the intake tube.

Then go ahead and place

the #54 hose clamp (3) onto the air filter flange. Leave it loose in preparation for the next step.



## STEP 22:

Install the intake tube into the air box and push the filter onto the tube.

Once fully seated, use a **5/16th nut driver** to tighten the hose clamp onto the air filter to hold the two together.





**STEP 23:**

Peel off the protective film from your clear lid (6).



## STEP 24:

Install the clear lid into your Snap In Lid Seal (5).

Once done, install the lid onto your S&B air box.

## STEP 25:

Install the provided coupler (15) with hose clamps (16) onto the turbo inlet.

You will need an **8mm** or **5/16th** socket or nut driver to loosen/tighten these hose clamps.

Additionally, we recommend facing the hose clamps on the top in order to access them easily.



**STEP 26:**

Disconnect the stock  
blowoff valve hose.



**STEP 27:**

Take the new S&B Silicone  
Wrapped hose, put the OEM  
clamps on both ends of the  
tube.



**STEP 28:**

Mount one end of the S&B blowoff hose onto the lower port on the S&B intake tube.



## STEP 29:

Install the air intake kit into the vehicle's engine bay.

## STEP 30:

Mount the intake tube onto the turbo inlet.



**STEP 31:**

Take a **T27 Torx** and mount the air box to the passenger side core support.

**STEP 32:**

Clip on the green quick connect to the top of the S&B intake tube.

**STEP 33:**

Clip in the other two quick disconnect fittings into the quick-disconnect assembly located near the bottom of

the intake tube.



**STEP 34:**

Mount the other end of the S&B blowoff tube onto the port just next to the 2 quick disconnects.



**STEP 35:**

Connect the two end of the included IAT sensor extension (20).

**STEP 36:**

Re-install the PCV line.

**YOUR INSTALL IS NOW COMPLETE**

Verify that all your