

# INSTALL INSTRUCTIONS FOR 75-5210

## BEFORE YOU START

Kit may not fit with the following Aftermarket Parts installed:

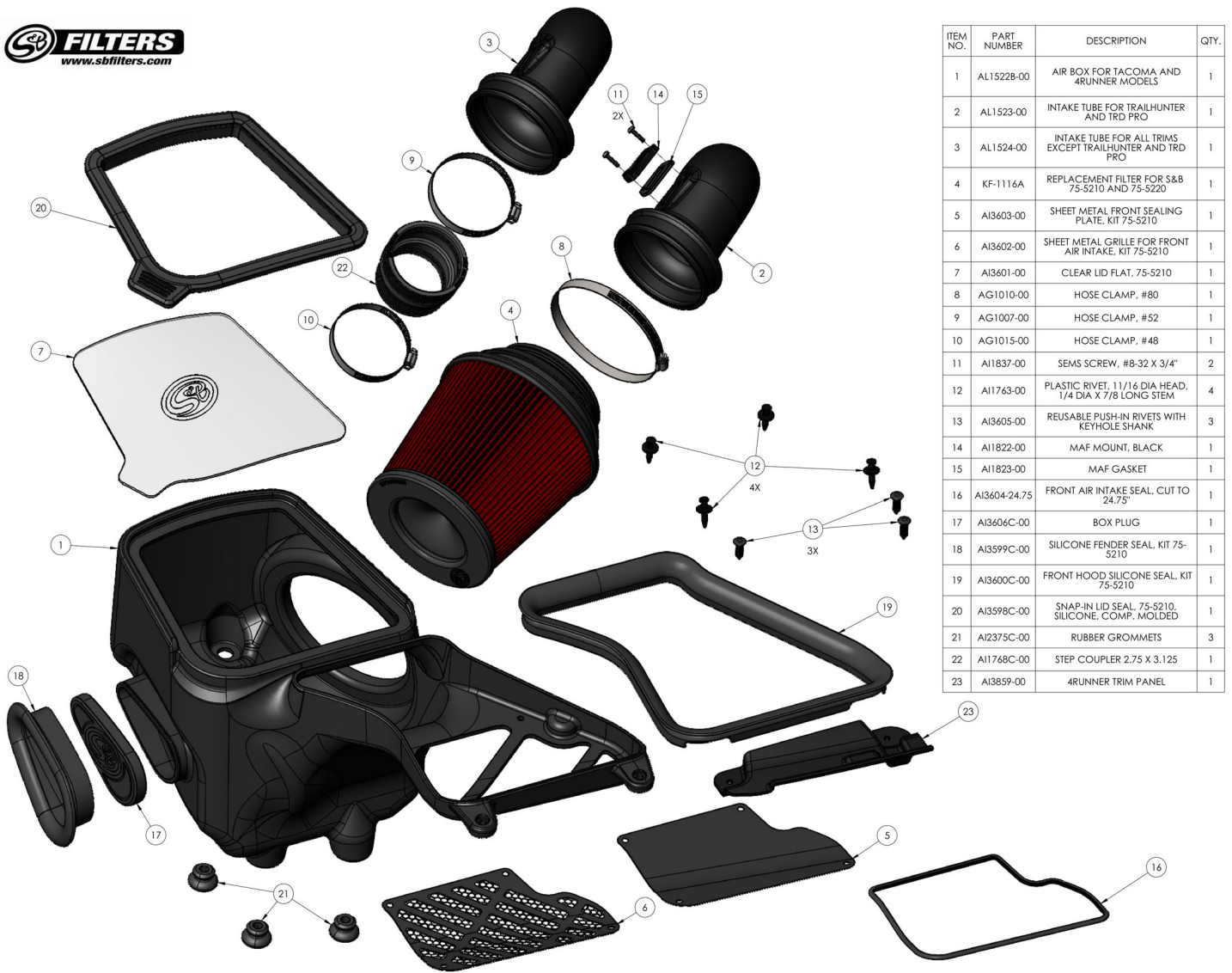
Body Lift or Lowering Kit

Custom Hood

Aftermarket Turbocharger and/or Throttle Body Spacer

- Please read the entire product guide before proceeding.
- Ensure all parts are present.
- If you are missing any of the components, call our customer support at (909) 947-0015.
- Do not work on your vehicle while the engine is hot.
- Make sure the engine is turned off and the vehicle is in Park or the Parking Brake is set.

## REQUIRED TOOLS



## STEP 1:

Start by disconnecting the negative terminal from your battery.

## STEP 2:

Remove the **4** grommets holding the front air scoop. Simply push down on the grommets for them to unclip.

Once done, go ahead and remove the scoop.



## STEP 3:

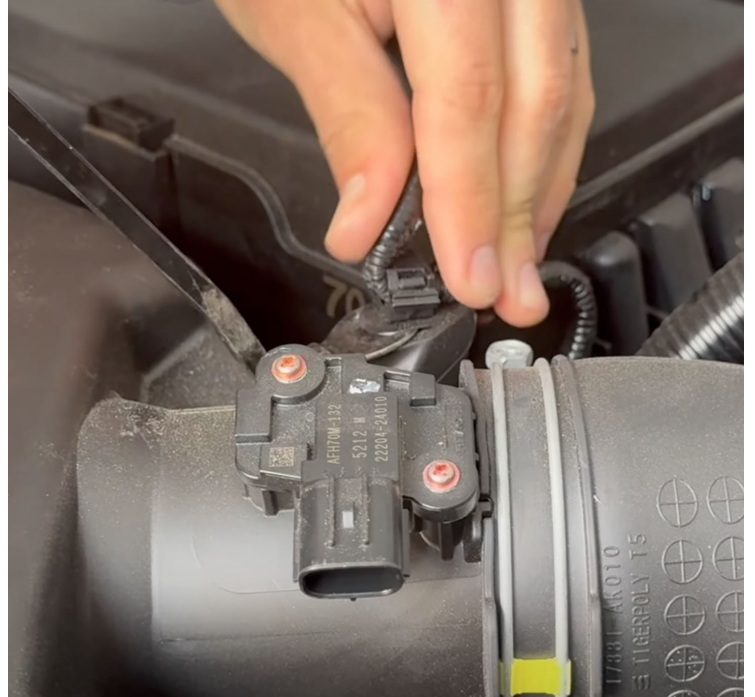
Disconnect the MAF Sensor.



## STEP 4:

Remove the clip holding the MAF Sensor harness to the

We recommend using a Body Panel Removal Tool to do this.



## STEP 5:

Loosen the lower hose clamp on the stock intake tube. You will need a **10mm** socket to do this.



## STEP 6:

Remove the stock air intake assembly from the vehicle.



## STEP 7:

Remove the MAF Sensor from the stock air intake.



## STEP 8:

Begin putting together your S&B Air Intake by installing the Front Scoop screen.



## STEP 9:

Install the S&B Air Filter into the air box. Once in, go ahead and pull the filter through to where the filter flange is showing (as seen in the picture).



## STEP 10:

Install the front scoop molding onto the air box assembly.



## STEP 11:

Flip the box over and install the three grommets on to the bottom of the air box.



## IMPORTANT TECH NOTE:

This Specific Cold Air Intake Kit comes with (2) Intake Tubes based on specific vehicle trims.

**AL1523-00**

TRD Pro or TrailHunter



**AL1524-00**

## STEP 12:

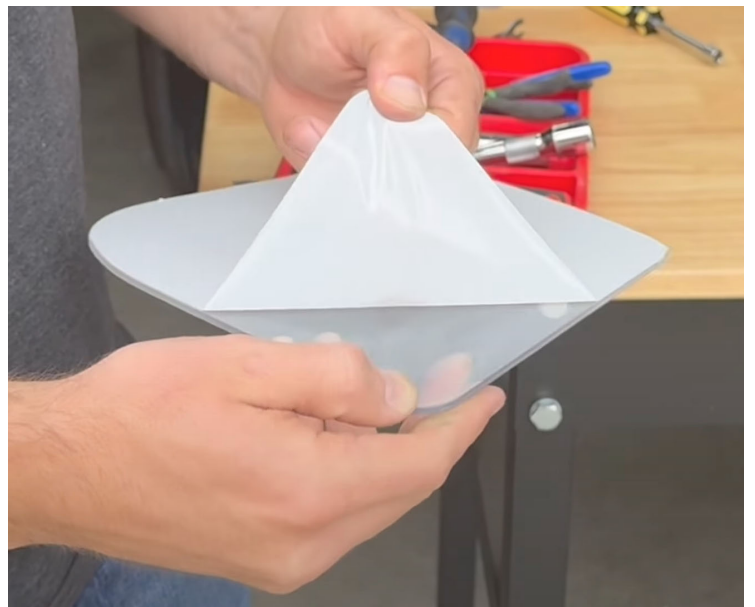
Re-install the MAF Sensor using the included spacer and gasket.

\*In terms of order, its **MAF Sensor, Spacer**, then the **Gasket**.



## STEP 13:

Remove the protective cover from the S&B Clear Lid.



## STEP 14:

Install the Clear Lid into the Snap-In air box molding.



## STEP 16:

Install the Clear Lid assembly onto the S&B air box.



## STEP 17:

This intake kit comes with **two** box plug options.

**Side Inlet (Shown):** Allows for more air through fender opening, slightly louder. The side inlet of the air box also works with OEM snorkels.

**Side Plug:** Reduces noise,  
Cookie Preferences the cost of reduced

airflow.



## STEP 18:

Install the S&B Air Box into the engine bay. Ensure that all the grommets are lined up and the intake tube is seated properly.

**Tip:** To make sure the air box is fully seated, you can feel the grommets popping through the floor of the air box.



Install the front scoop extension

**4Runner Owners:** There is an included front scoop extension in order for you to securely attach the scoop to the core support.



## STEP 20:

Connect the MAF Sensor to the S&B Intake Tube.



## STEP 21:

Using an **8mm** socket, please tighten the hose clamps holding the intake tube to the turbo.



## STEP 22:

Use a zip-tie to keep the MAF Sensor harness out of the way.



## STEP 23:

Please verify that everything is tight and secure

**Reconnect** the negative battery cable to the negative battery terminal.

[Your install is now complete.](#)

