
INSTALL INSTRUCTIONS FOR 75-5194

BEFORE YOU START

Please read the entire product guide before proceeding. Ensure all parts are present. If you are missing any of the components, call our customer support at (909) 947-0015. Do not work on your vehicle while the engine is hot. Make sure the engine is turned off and the vehicle is in Park and the Parking Brake is set.

S&B FILTERS recommends that you keep your OE intake system in the event it is required in the future.

In order to maintain your warranty, all connections and components must be checked periodically for alignment and for proper tension on all connections. Failure to do so may void your warranty.

Use only S&B FILTERS cleaning and oil products to service your filter. Using any other brand oil and or cleaners on your S&B air filter may void your warranty

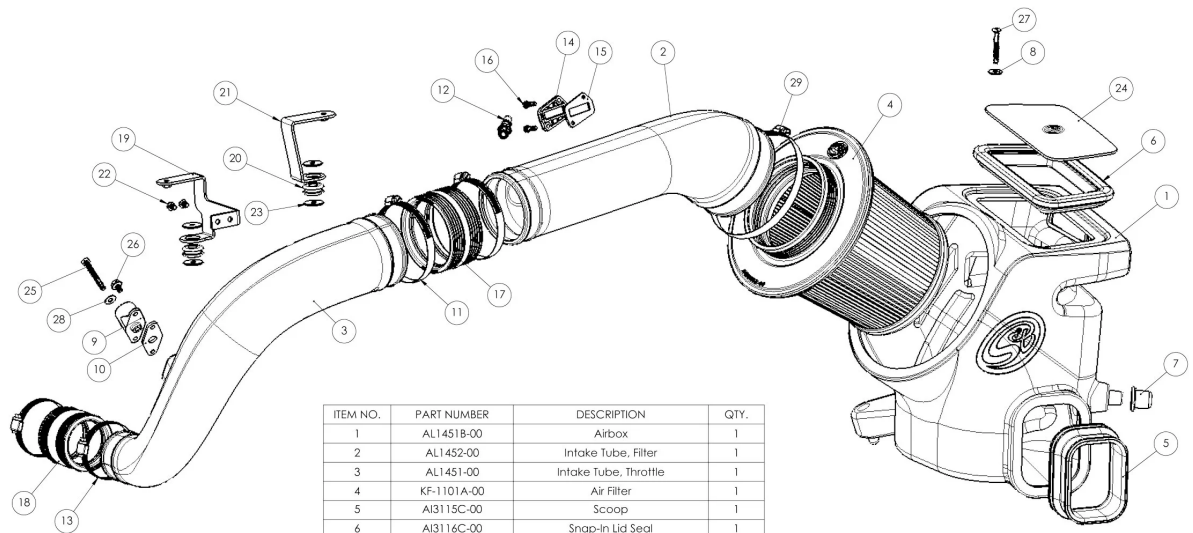
REQUIRED TOOLS

Ratchet/Wrench, 8mm & 10mm Socket, Panel Popper, Crescent Wrench, Phillips Screwdriver and Pliers

Note: Approximate Install Time: 1 Hr 00 Mins.

PERIODICALLY CHECK THE FOLLOWING.

1. Intake Tubes and Filter connections and Intake Box fasteners making sure they are tight.
2. All electrical connections and wire harnesses moved during the installation of the intake and make sure they are secure and away from any hot or moving components.
3. Check for any signs of abrasion or wear and tear on the intake tube, box, filter, and electrical harnesses moved or near the intake and repair/replace as necessary.



ITEM NO.	PART NUMBER	DESCRIPTION	QTY.
1	AL1451B-00	Airbox	1
2	AL1452-00	Intake Tube, Filter	1
3	AL1451-00	Intake Tube, Throttle	1
4	KF-1101A-00	Air Filter	1
5	AI3115C-00	Scoop	1
6	AI3116C-00	Snap-In Lid Seal	1
7	AI2291C-00	Mounting Prong	1
8	AI1755-00	M6 Washer	1
9	AI2980-00	Injection Molded Purge Valve	1
10	AI2981-00	Purge Valve Gasket	1
11	AG1008-00	Hose Clamp, #60	2
12	AI1776-00	Fitting, Quick Connect, 3/8 Diameter to 1/4 NPT	1
13	AG1005-00	Hose Clamp, #40	2
14	AI1822-00	MAF Pad	1
15	AI1823-00	MAF Gasket	1
16	AI1837-00	Screw, SEMS, Pan Head, Phillips, #8-32 X 3/4, SS	2
17	AI1129C-00	Straight Coupler, 3.75" ID x 2.0" Long	1
18	AI2855C-00	Straight Coupler, 2.50" ID x 2.50" Long	1
19	AI3135-00	Left Bracket, Cover	1
20	AI1563-00	Grommet	2
21	AI3134-00	Right Bracket, Cover	1
22	AI3308-00	18-8 Stainless Steel Button Head Hex Drive Screw, 1/4-20	2
23	AI2453-00	Washer, Flat, 1/4", 1.00" OD, Steel, Zn Pltd	4
24	AI3306-00	Clear Lid	1
25	AI3029-00	18-8 Stainless Steel Hex Head Screw	1
26	AI2452-00	Stainless Steel Flanged Hex Head Screw	1
27	AI2568-00	Button Head Hex Drive Screw	1
28	AI1073-00	1/4" Washer	1
29	AG1011-00	Hose Clamp, #88	1

STEP 1

To begin removing the OE airbox, remove the screw fastening the rear of the intake box to the vehicle near the driver side fender.



STEP 2

Next, remove the large harness that is secured to the back of the airbox. It is pushed into the airbox and secured with a rivet, so use a panel popper to pop out the rivet. The rivet will be pushed into the S&B airbox.



STEP 3

Disconnect the MAF by unlocking the tab and then depressing the lever as you pull it off.



STEP 4

Loosen the hose clamp securing the tube to the intake.



STEP 5

Disconnect the PCV fitting from the intake by pressing on the buttons on the side and pulling it off.



STEP 6

Unfasten the screws securing the engine cover to the vehicle. These screws will be reused later.



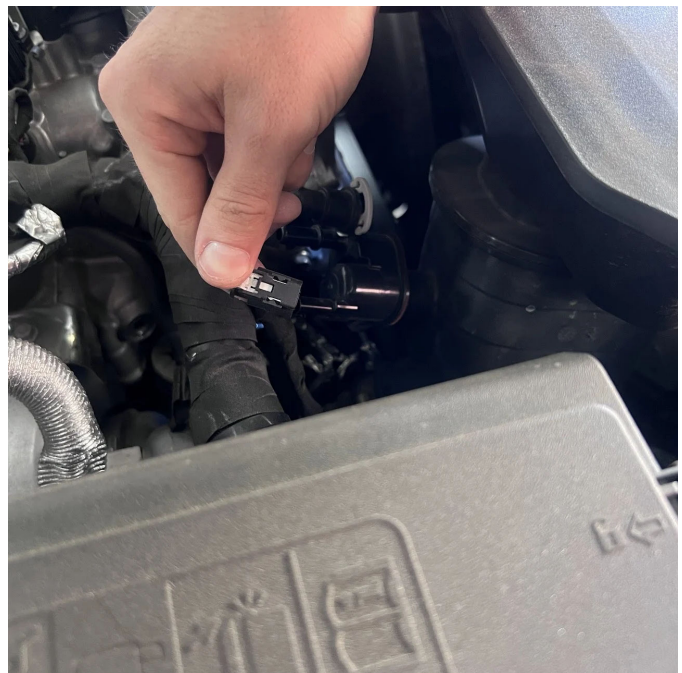
STEP 7

Pull off the engine cover.



STEP 8

Disconnect the electrical connector on the purge valve that is mounted to the stock intake tube near the throttle body.



STEP 9

Disconnect the fitting on the purge valve by pressing on the tab and pulling it off.



STEP 10

Unfasten the hose clamp securing the OE intake tube to the throttle body using a long flathead screwdriver or a 7mm socket with an extension.



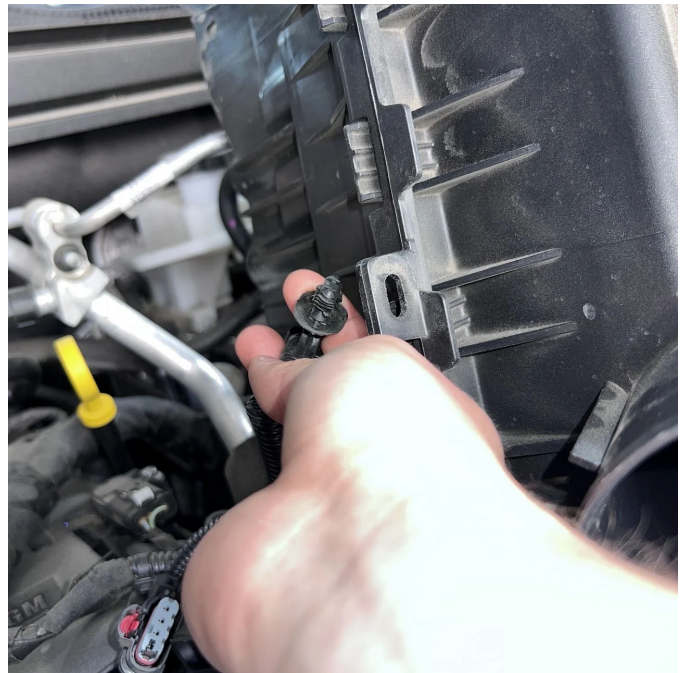
STEP 11

Unfasten the 2 nuts that secure the intake tube to the engine, these will be reused later.



STEP 12

Use a panel popper to disconnect the rivet securing the MAF harness to the OE airbox.



STEP 13

Remove the intake tube and airbox from the vehicle. The tube will need to go straight

up at the engine area first to get it clear of the mounting studs. After the tube is removed, the airbox will need to maneuver out from underneath coolant lines to be pulled out.



STEP 14

Begin preparing the intake tube that connects to the filter by fastening the supplied PCV fitting to the tube.



STEP 15

Then, start transferring the stock MAF sensor by unfastening it with a Torx from the OE airbox.



STEP 16

Next, place the MAF on the supplied hard plastic adapter piece. Then, put the foam gasket in between the tube and adapter piece and secure it with the supplied screws as pictured. The intake will throw a check engine light if the foam is not stalled correctly.



STEP 17

Prepare the curved intake tube by unfastening the purge valve from the stock intake tube, and then fastening it to the supplied adapter piece with the foam gasket sandwiched between the tube and the adapter using the supplied 2 screws as pictured. The intake will throw a check engine light if the foam is not installed between the adapter and tube.



STEP 18

Add the smaller coupler to the curved intake tube and fasten the hose clamp to the tube. Put the next hose clamp loosely on the coupler to allow it to fit over the throttle body.



STEP 19

Add the supplied grommets and front scoop to the airbox.



STEP 20

Install the airbox into the vehicle along with the filter, making sure that the rubber air inlet fits over the stock scoop. Be careful that the grommets do not fall off of the box.



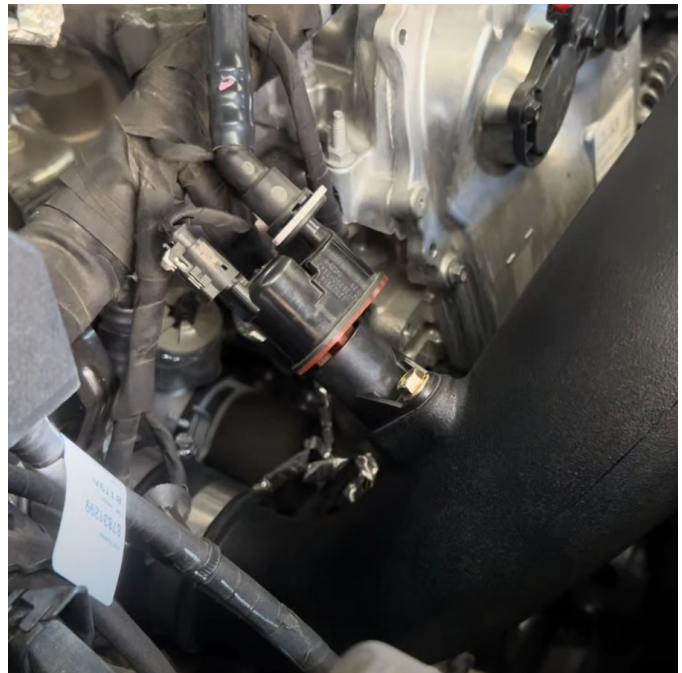
STEP 21

Install the curved intake tube into the vehicle, fitting the coupler over the throttle body.



STEP 22

Connect the quick connect and harness on the purge valve, making sure that they are locked.



STEP 23

Disconnect the two push rivets by the mounting studs of the vehicle to allow the supplied brackets to sit correctly.



STEP 24

Prepare the supplied S&B mounting hardware by placing the grommets in the large hole and then sandwiching this grommet with the two large washers.



STEP 25

Install the driver side bracket as pictured on the engine mounting point. This one will only fasten to the engine cover. Loosely tighten.



STEP 26

Install the other bracket on the passenger side engine mounting point, also fastening to the S&B tube. Fully tighten both brackets making sure the top tabs are pointing in an opposite direction towards the respective fenders of the vehicle. You can verify their orientation by making sure the holes line up with the cover. Make sure the harnesses are not being squeezed underneath the bracket.



STEP 27

Fully tighten the hose clamp at the throttle body while making sure it slides over it completely.



STEP 28

Install the filter tube with the supplied coupler and fasten every hose clamp.



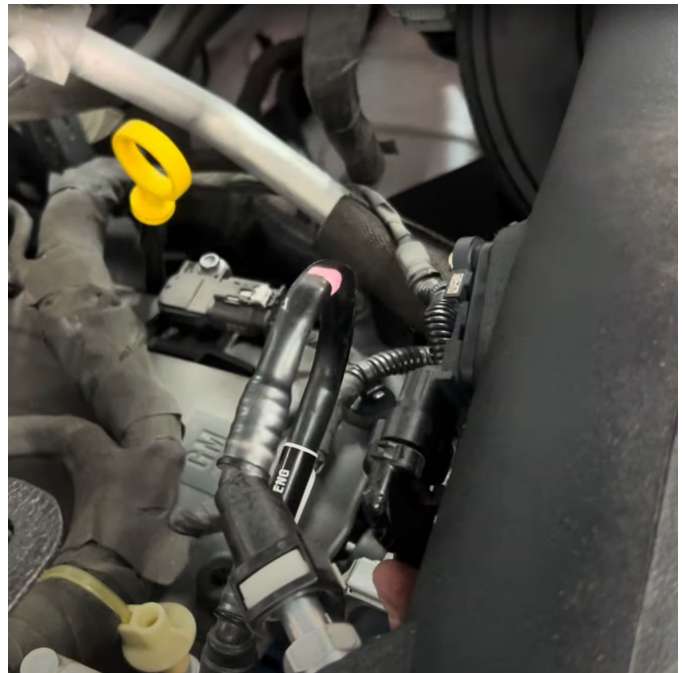
STEP 29

Connect the PCV fitting to the S&B tube, making sure it locks.



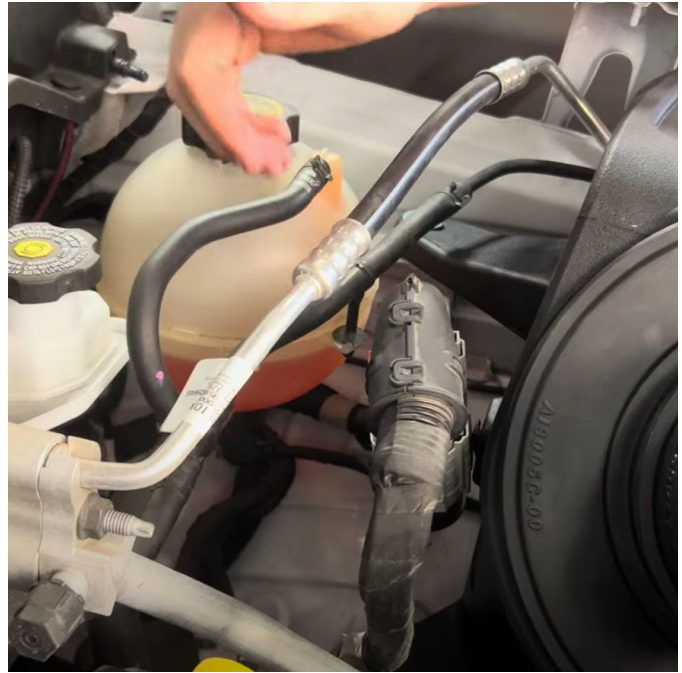
STEP 30

Reconnect the MAF sensor, making sure it locks.



STEP 31

Press the previously removed large harness into the S&B airbox.



STEP 32

Use the supplied screw to fasten the arm of the S&B airbox to the vehicle.



STEP 33

Remove the plastic cover from the clear lid, put it inside the groove of the rubber lid seal, and install this into the air box.



STEP 34

Fasten the cover to the two brackets using the previously removed screws.

