

INSTALL INSTRUCTIONS FOR 75-5161

BEFORE YOU START

Please read the entire product guide before proceeding.

Ensure all parts are present.

If you are missing any of the components, call our customer support at (909) 947-0015.

Do not work on your vehicle while the engine is hot.

Make sure the engine is turned off and the vehicle is in Park or the Parking Brake is set.

Note: This intake kit may not fit with the following Aftermarket Parts installed: Body Lift or Lowering Kit, Custom Hood, Throttle Body Spacer / Upgrade

REQUIRED TOOLS

11mm deep socket

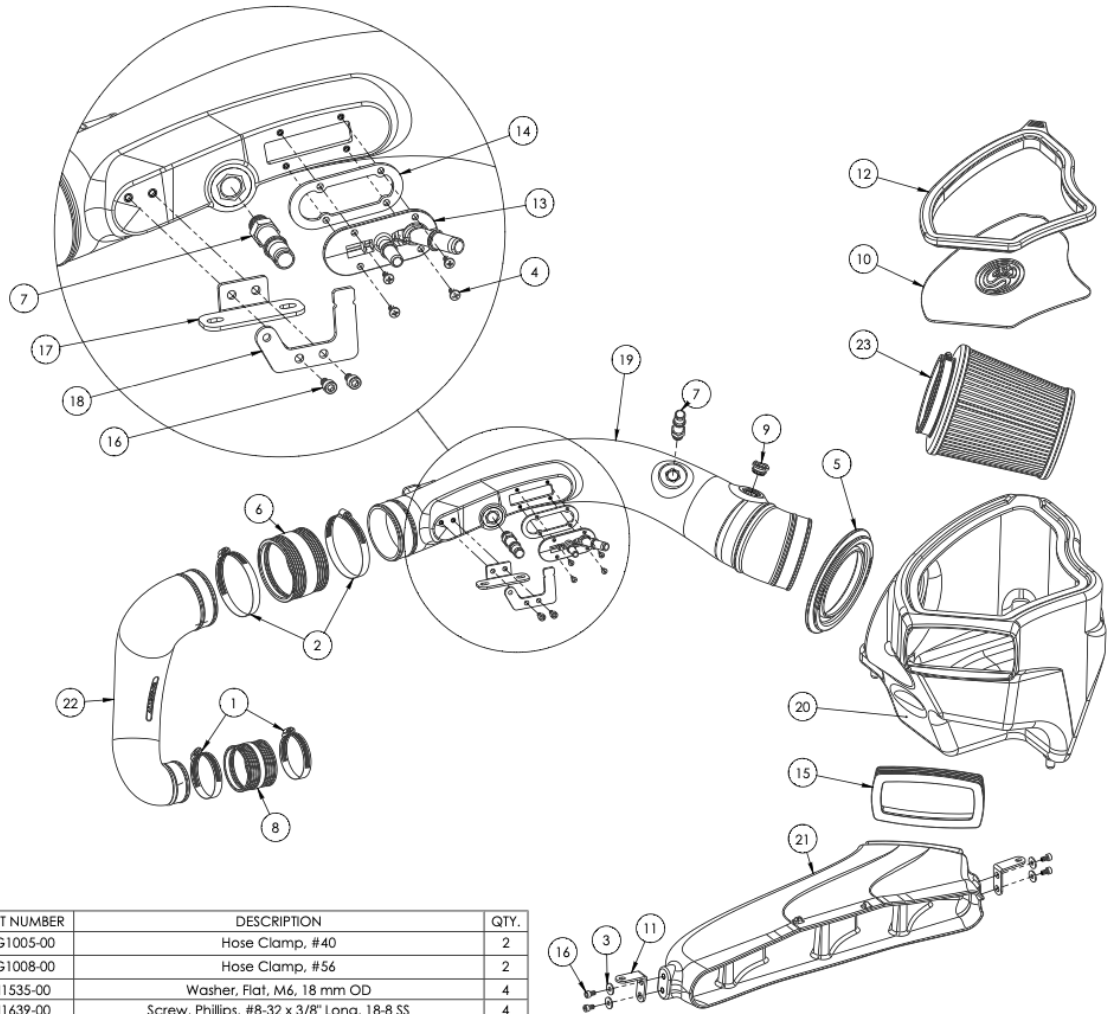
13mm deep socket

Flathead Screw Driver or 7mm & 8mm Nut Drivers

Panel Popper

5mm Hex

5/8" Quick Disconnect Tool



ITEM NO.	PART NUMBER	DESCRIPTION	QTY.
1	AG1005-00	Hose Clamp, #40	2
2	AG1008-00	Hose Clamp, #56	2
3	AI1535-00	Washer, Flat, M6, 18 mm OD	4
4	AI1639-00	Screw, Phillips, #8-32 x 3/8" Long, 18-8 SS	4
5	AI1650C-00	Tube Seal	1
6	AI1678C-00	Straight Coupler, 3.5" ID x 2.25" Long	1
7	AI1701-01	Fitting, Quick Connect to 3/8"NPT	2
8	AI1771C-00	Coupler, 2.50" ID x 2.00" Long	1
9	AI1948C-00	IAT Sensor Adapter	1
10	AI2383-00	Clear Lid, Flat	1
11	AI2681-00	Mounting Bracket, Scoop	2
12	AI2682C-00	Snap-In Lid Seal	1
13	AI2835-00	Dual Quick Connect	1
14	AI2839-00	Gasket, Quick Connect	1
15	AI2861C-00	Scoop Seal	1
16	AI2937-00	Screw, Socket Head, M6 x 1mm x 10mm Long, 18-8 SS	6
17	AI2938-00	Mounting Bracket, Tube, 75-5161	1
18	AI2939-00	Mounting Bracket, Clip, 75-5161	1
19	AL1396-00	Intake Tube, 75-51561	1
20	AL1396B-00	Airbox, 75-5161	1
21	AL1396S-00	Scoop, 75-5161	1
22	AL1397-00	Intake Tube, Small, 75-51561	1
23	KF-1057	Air Filter	1

STEP 1

With the ignition switched off and the parking brake set, disconnect the negative battery cable on the battery.

IMPORTANT: Failure to disconnect the battery for a minimum of 2 hours may cause the Check Engine Light to illuminate upon completion of the installation or subsequent operation. DO NOT SKIP THIS STEP!



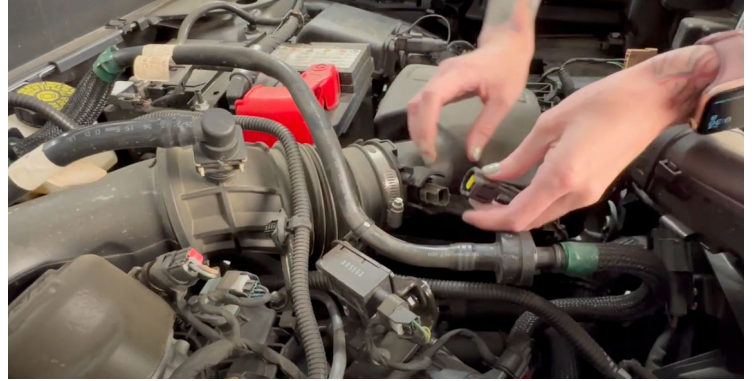
STEP 2

Remove the (2) push-rivets to loosen and remove the shroud.



STEP 3

Loosen the Airbox hose clamp, and the IAT sensor. Next, you will remove the (2) clips that are holding the IAT wiring harness to the Airbox, which will allow you to successfully remove the IAT sensor.



STEP 4

Now that the intake tube hose-clamp has been loosened, you may successfully remove the Airbox from the vehicle



STEP 4B

If the Isolator came out when removing the Airbox, simply press it back into place.



STEP 5

Remove the (2) Nuts that are holding the Hose Assembly to the bracket



STEP 6

Now that you have removed the (2) nuts, you may successfully disconnect the electrical sensor and remove the retainer clips.



STEP 7

Remove the (2) quick-connect fittings by pulling on the clip (in an outward motion). This will open the clip and allow you to remove the fittings.



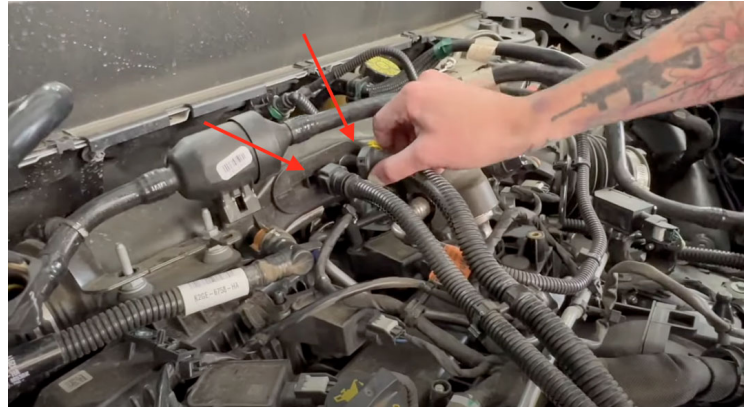
STEP 7B

After the (2) quick-connect fittings have been removed, loosen the hose clamp behind the assembly



STEP 8

Disconnect the (2) factory Quick-Connect hoses. Pulling the hose out from the base should release and disconnect the hose.



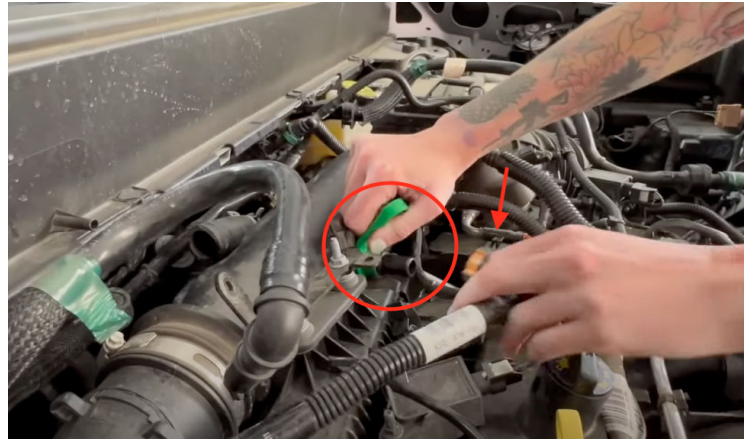
STEP 9

Using Pliers, you will need to grip the hose clamp and pull it back to release the hose (attached to the factory intake tube). The hose can be found right behind the factory intake tube assembly.



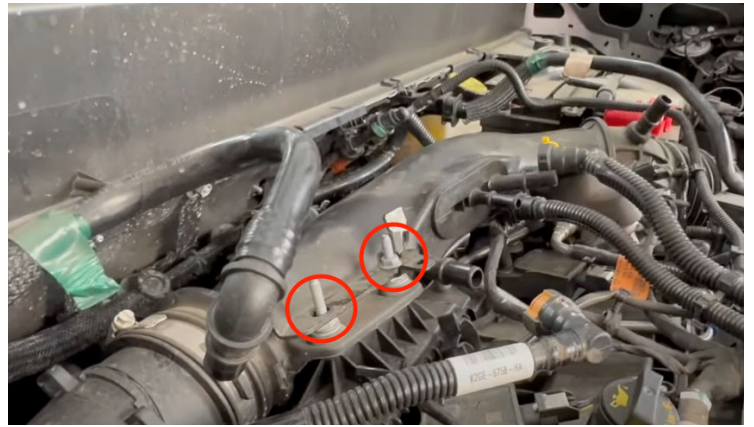
STEP 10

Using a Quick-Connect tool, you will need to disconnect and remove the remaining quick-connect hose. (located towards the front end of the intake tube)



STEP 11

Now that the Quick-Connect hoses have been disconnected, you may now remove the bracket and (2) nuts that will release the intake tube.



STEP 11B

A firm pull should release and remove the intake tube now that everything has been disconnected



STEP 12

Loosen the Hose clamp on the Turbo. You will most likely need to hold the tube back to be able to see and loosen the appropriate hose clamp.



STEP 13

Next, you will not install the new tube seal onto the S&B Airbox.



STEP 13B

Install the new Grommet onto the S&B Scoop.



STEP 13C

Install the (2) quick-connect fittings on the Intake tube by hand, and only use a few turns of the wrench to tighten. You will still have thread showing once they are installed. If your vehicle does not utilize a quick connect fitting on the port closer to the airbox, a 3/8" NPT plug is provided and should be installed instead of the quick connect fitting.



STEP 13D

Install the Venturi and Gasket seal using the hardware provided. Please make sure the gasket is

installed with the Venturi, this is needed for a proper seal without leaking. We recommend using threadlocker on the screws before installing.



STEP 13E

Using the longer bolts provided, install the (2) brackets onto the S&B Intake tube.



STEP 13F

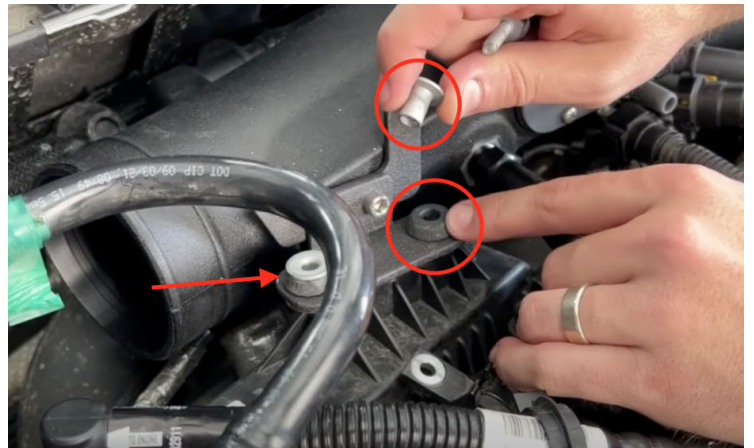
Remove the IAT sensor from the factory Airbox, so that you can transfer it over to the new S&B Intake tube. Install the new grommet onto the S&B Intake tube, and then the IAT sensor can be installed properly. Make sure the tabs line up when installing the grommet. Press

in the IAT sensor, and rotate the sensor clockwise until the small tab goes over the "ramp" and locks the sensor in place.



STEP 13G

Reuse the OEM hardware with the new S&B bracket. You will place the small black rubber Grommet first, and then press the fitting into the grommet (as shown).



STEP 14

Install brackets on both sides of the S&B scoop



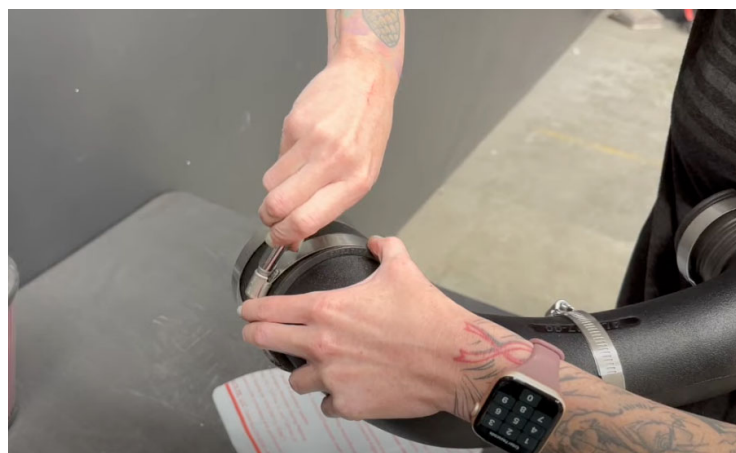
STEP 15

Remove the protective film cover from the new S&B Clear Lid, and install the Lid seal onto the Clear Lid.



STEP 16

Install the new clamps and couplers onto the new intake tube. Tighten down the REAR clamps (the larger diameter clamps).



STEP 16B

Please pay close attention to the clamp that will be installed onto the Turbo. Tighten the clamp enough to where it is on the tube, and can still be installed on the Turbo. Orient the clamp fitting so that it faces the Cab



STEP 17

When installing the new Intake tube, begin with the end that attaches to the Turbo (smaller diameter end of the tube). Do not tighten any of the ends, and make sure the intake tube is fitted in place properly.



STEP 18

Next, you will be installing the new S&B Airbox, Intake

tube, and Scoop. Begin by placing the Airbox in its appropriate place, and working the Intake tube UNDER any hoses or wires in its way (for proper fitment). You may now connect the Intake tube to the Airbox.



STEP 19

You may now attach the Scoop to the Airbox to complete the assembly.



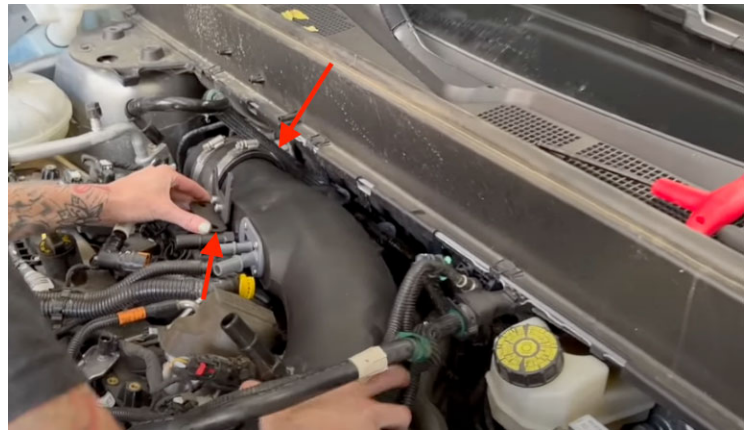
STEP 19B

Make sure that the brackets line up properly (or make any adjustments needed to align the brackets). Re-install the push rivets to complete the Scoop installation.



STEP 20

You may now slide the coupler (from the tube that is connecting to the Turbo) over to the main intake tube and connect the two. Make sure the bracket aligns properly.



STEP 20B

install the studs, and then slide the harness bracket through the stud. Tighten both sides down.



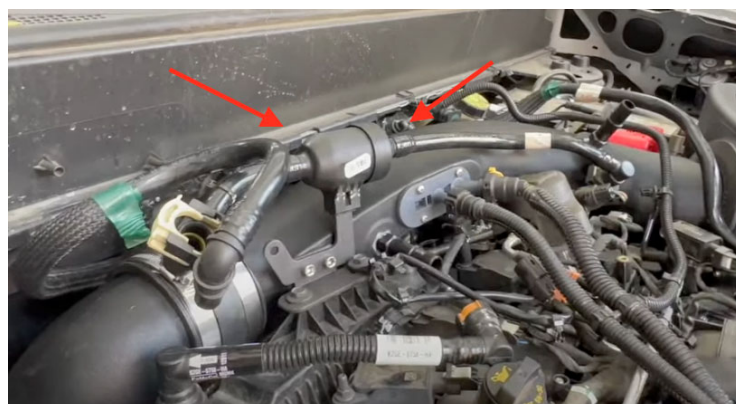
STEP 20C

Remove the small rubber gasket from the OEM Bracket, and install it on the new S&B bracket (as shown)



STEP 20D

You may now re-install the OEM harness over the gasket (on the S&B bracket), and re-connect all of the wiring harnesses and quick-connect fittings to the intake tube. Secure all wiring Harnesses by re-installing the OEM clips (that were removed earlier)



STEP 21

Use the S&B IAT Harness Extension to connect your IAT sensor.



STEP 22

Reinstall the hose and clamp located behind the intake tube. Clearance will be limited, so we recommend using Channel lock pliers to slide the clamp back in place.



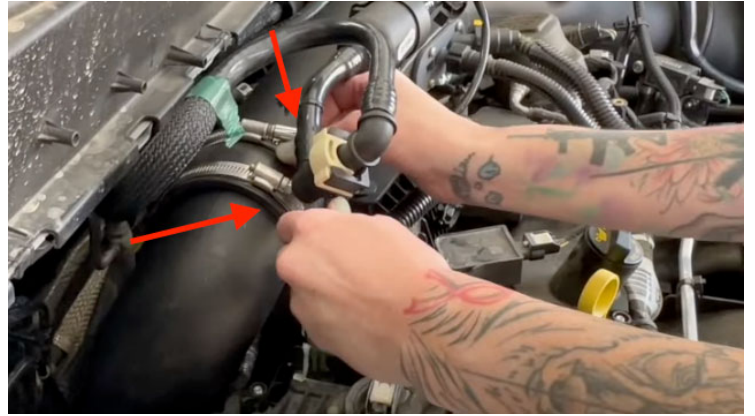
STEP 23

You can now install your S&B Air filter, and tighten it down.



STEP 24

Go back and make sure all Fittings, Clamps, and Harnesses were properly tightened



STEP 25

You may now install your Snap-in clear lid



STEP 26

Reconnect your Battery's negative terminal (after a minimum of 2-hours of being disconnected).



STEP 27

Inspect your installation, make sure the kit is properly positioned and all fasteners and hose clamps are secured. Keep all stock parts in case you would ever need to reinstall the stock intake assembly. Affix the ID label near the intake kit. If you are an installer, give the owner the QR code for the Installation Instructions so that he/she is aware of the Maintenance and Operation procedures given in the beginning of the Instructions. The Installation is now complete.

