

INSTALL INSTRUCTIONS FOR 75-5155

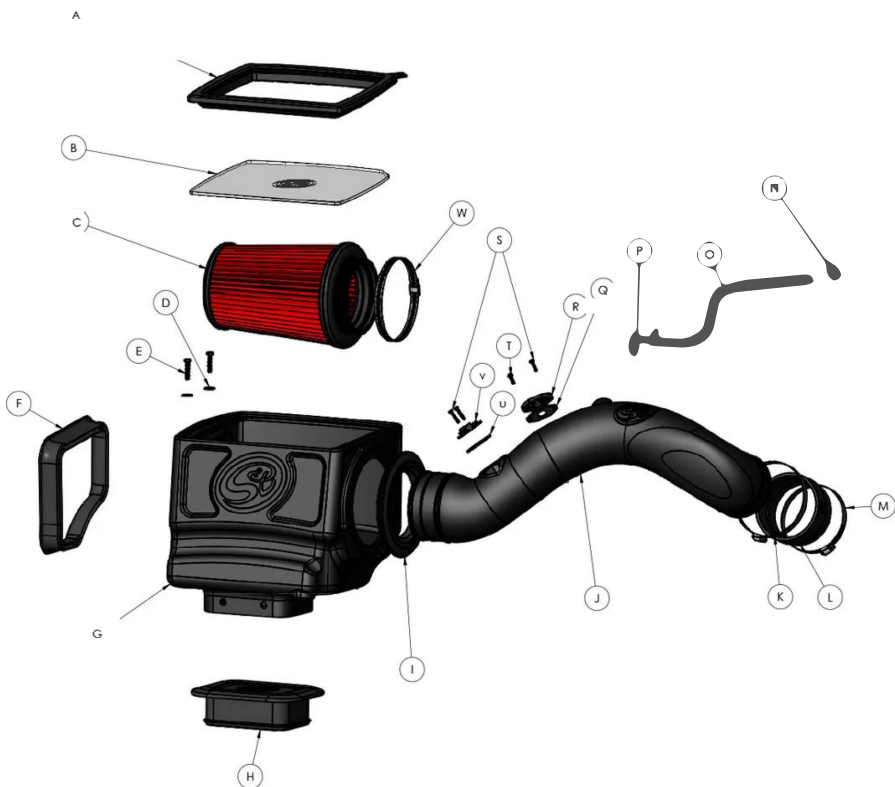
PRINT

BEFORE YOU START

- Please read the entire product guide before proceeding.
- Ensure all parts are present.
- If you are missing any of the components, call our customer support at (909) 947-0015.
- Do not work on your vehicle while the engine is hot.
- Make sure the engine is turned off and the vehicle is in Park or the Parking Brake is set.
- Note: This intake kit may not fit with the following Aftermarket Parts installed: Body Lift or Lowering Kit, Custom Hood, Throttle Body Spacer / Upgrade

REQUIRED TOOLS

- Ratchet and extensions
- 10mm socket and wrench
- 5/16" socket and wrench/nut driver or flat head screwdriver
- Phillips screwdriver
- 9/16" or adjustable wrench



ITEM NO.	PART NUMBER	DESCRIPTION	QTY.
A	AI2533C-00	Snap-in lid seal	
B	AI2620-00	Polycarbonate Lid	
C	KF-1063 / KF-1063D	Air Filter	
D	AI1535-00	Washer, Flat, 6mm	
E	AI1257-00	Screw, Hex Head, M6-1.0x30mm	
	AI1550-00	Fender Seal	
G	AL1375B-00	Air Box	
H	AI1559-00	Box Plug	
	AI1650C-00	Tube Seal	
	AL1375-00	Tube	
K	AG1009-00	Hose Clamp, #72	
	AI1542-01	Silicone Step Coupler	
M	AG1018-00	Hose Clamp, #64	
N	AG1013-00	Hose Clamp, #6	2
O	AI1037-06	Silicone Breather Tube, 18"	
P	AI1307-00	Hose Barb, 3/8" x 1/4 NPT, 90 degree	
Q	AI2327-00	MAP Gasket	
R	AI2326-00	MAP Adapter Plate	
	AI2328-00	8-32 x 7/8" Pan Head Screw	3
	AI1837-00	8-32 X 3/4" Pan Head Screw	
U	AI2266-00	MAF Gasket	
V	AI2265-00	MAF Adapter	
W	AG1010-00	Hose Clamp, #80	

STEP 1

With the ignition switched off and the parking brake set, disconnect the negative battery cable on the passenger's side.

IMPORTANT: Failure to disconnect the battery for a minimum of 2 hours may cause the Check Engine Light to illuminate upon completion of the installation or subsequent operation. **DO NOT SKIP THIS STEP!**



STEP 2

Remove the engine cover by lifting it up out of the grommets, then pull towards the front of the vehicle.



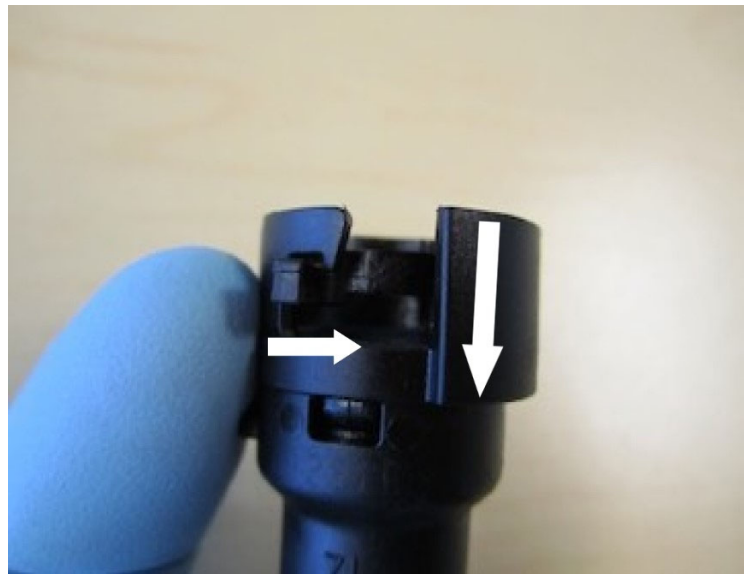
STEP 3

Disconnect the crankcase vent line from the intake tube plenum by gently pulling it out.



STEP 4

Disconnect the other end of the crankcase vent line from the vehicle by sliding the locking tab over and pull away from the valve cover port.



STEP 5

Disconnect the MAF sensor wiring harness from the MAF sensor.

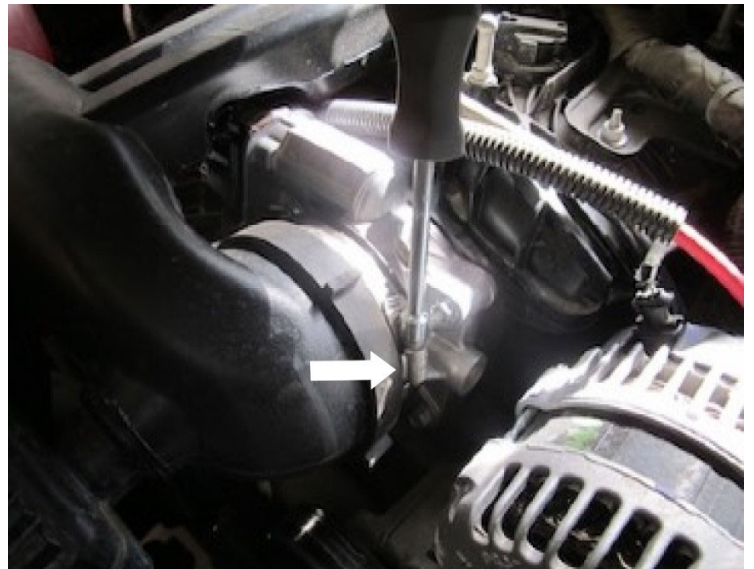
Note: If equipped,

disconnect the Pressure Sensor wiring harness (located on the air cleaner lid) at this time as well.



STEP 6

Disconnect the intake tube from the throttle body.



STEP 7

Using a flat blade screwdriver, remove the intake tube from the pushpin located on the coolant tube.



STEP 8

Disconnect the intake tube from the air cleaner assembly. Then remove the intake tube from the vehicle.



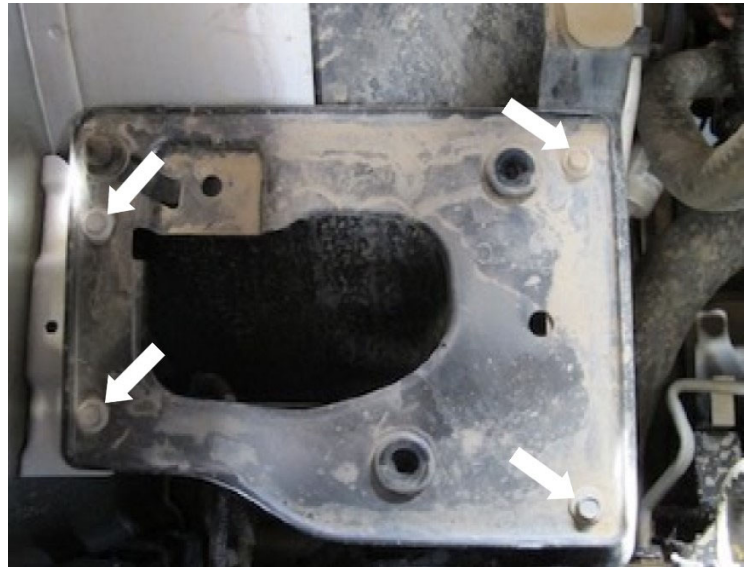
STEP 9

Remove the air cleaner box from the vehicle by carefully pulling it up out of the factory grommets.



STEP 10

Using a 10mm socket, remove the 4 bolts securing the airbox tray. Then remove the tray from the truck.



STEP 11

Install the Tube Seal (I) onto the Airbox (G).



STEP 12

Install the Fender Seal (F) onto the Airbox (G).



STEP 13

Determine whether or not you would like to install the box plug by reading the Airbox Plug Testing section in the top part of these instructions. If you would like to, install the Box Plug (H) into the Airbox (G)



STEP 14

Insert the airbox into the vehicle as shown and secure it using the 4 provided M6 Screws (E) and Washers (D). Tighten with a 10mm Socket.



STEP 14 (IMAGE 2)



STEP 15

Install the 90 degree Hose Barb Fitting (P) onto the Intake Tube (J). Twist until hand tight then use a 9/16" or adjustable wrench to turn it to the position shown.



STEP 16

Remove the MAF sensor from the stock intake and install it on the S&B Intake Tube (J) along with the MAF Pad (V) and Gasket (U) using the provided 7/8" Screws (S).

If your vehicle also has a MAP sensor, using a ¼" drill bit, drill a hole at the drill point location shown at the red arrow. Remove the MAP sensor from the stock intake and Install it on the S&B intake tube along with the MAP Pad (R) and Gasket (Q) using the provided 7/8" Screw (S) and ¾" Screw (T).



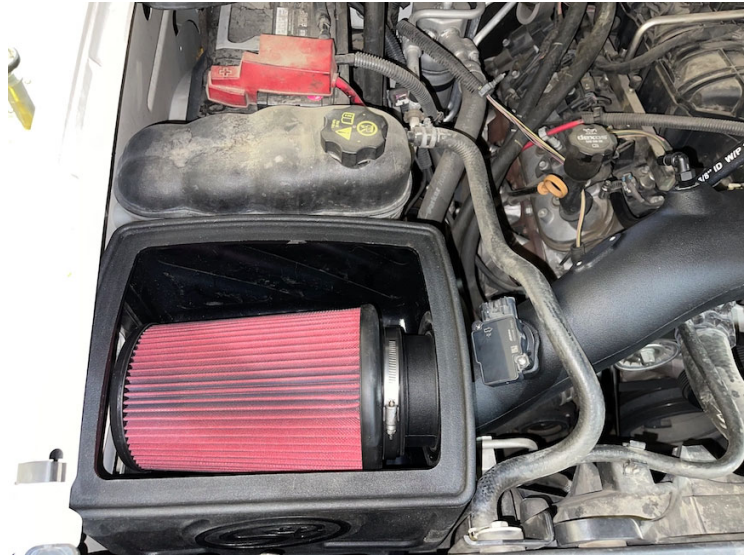
STEP 17

Slide the large end of the Silicone Step Coupler (L) over the throttle body side of the Intake Tube (J) as shown. Place the #72 Hose Clamp (K) over the large end, and the #64 Hose Clamp over the smaller end but do not fully tighten at this time.



STEP 18

Insert the Air Filter (C) into the Airbox (G). Push The Intake tube (J) into the Airbox through the Tube Seal (I). Slide the Air Filter flange onto the intake tube as it enters the box for the easiest installation. Push the intake tube in until the opposite end with the coupler (L) lines up with the throttle body and slide the coupler onto the throttle body. Using a 5/16" Socket, nut driver, or a flathead screwdriver, tighten the hose clamp (W) on the air filter to secure it to the intake tube. Tighten both Hose Clamps (K, M) on the coupler to secure the Intake tube To the Throttle Body.



STEP 18 (IMAGE 2)



STEP 19

Install the Silicone Breather Hose (O) by pushing one end over the Hose Barb Fitting (P) and the other end over the valve cover vent line where the stock line was removed earlier. Trim the hose to the desired length if necessary for better fitment, then secure the hose on both ends using the #6 Hose Clamps (N) provided using a 5/16" socket or nut driver.



Reconnect the MAF Sensor.

STEP 20

Remove the protective film

covering the Lid (B). Insert the lid into the Snap-in Lid Seal (A) making sure to line up the cutout in the lid with the mating feature inside the lid seal under the pull tab. Install the Snap-in Lid assembly onto the Airbox (G) by first inserting one corner or side of the snap feature onto the box, then work your way around the lid pushing in each side until it snaps onto the Airbox.



STEP 21

Reinstall the engine cover.



STEP 22

Reconnect the Negative battery terminal. Inspect your installation, make sure the kit is properly positioned and all fasteners and hose

clamps are secured. Affix the ID label near the intake kit. If you are an installer, give the owner the QR code for the Installation Instructions so that he/she is aware of the Maintenance and Operation procedures given in the beginning of the Instructions. The Installation is now complete.

