

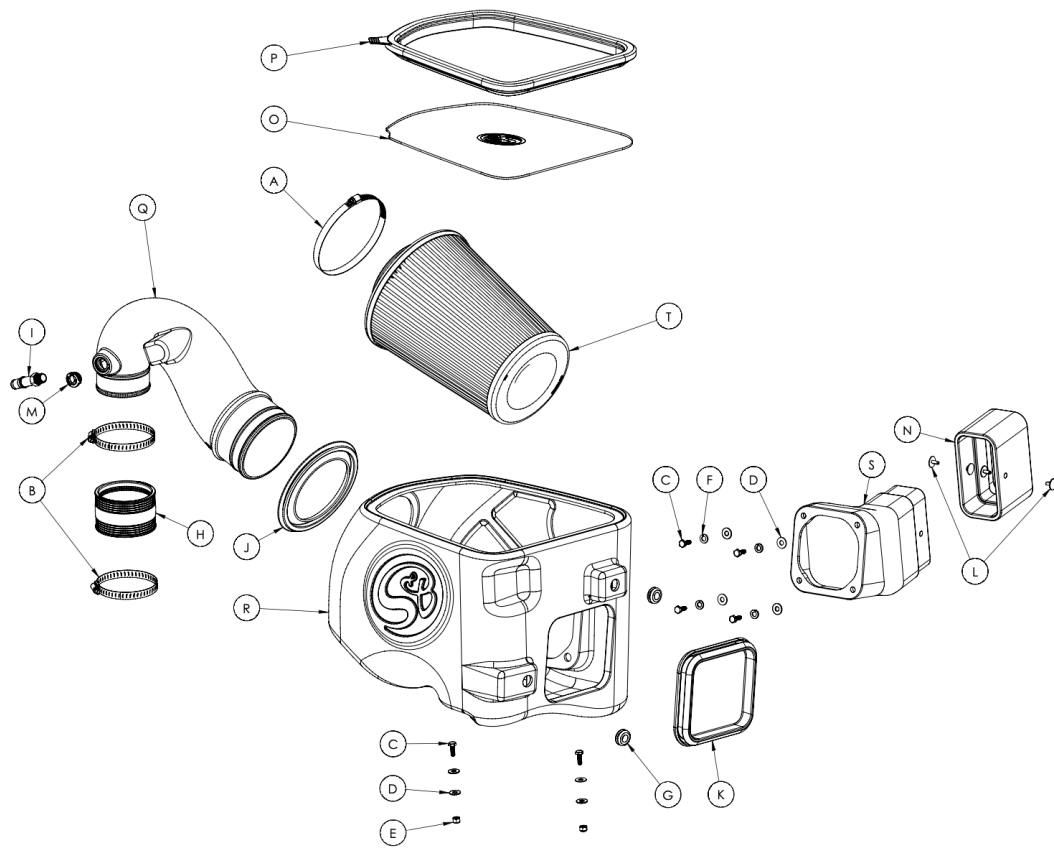
# INSTALL INSTRUCTIONS FOR 75-5124

## BEFORE YOU START

- Please read the entire product guide before proceeding.
- Ensure all parts are present.
- If you are missing any of the components, call our customer support at (909) 947-0015.
- Do not work on your vehicle while the engine is hot.
- Make sure the engine is turned off and the vehicle is in Park or the Parking Brake is set.
- Note: This kit will not fit the 2019 Ram 1500 Classic. This intake kit may not fit with the following Aftermarket Parts installed: Body Lift or Lowering Kit, Custom Hood, Throttle Body Spacer / Upgrade

## REQUIRED TOOLS

- Ratchet with Ratchet Extension Bar
- 8mm, 10mm, 11mm, 13mm Socket
- Panel Popper
- Crescent Wrench
- Phillips/Flat Blade Screwdriver
- Scissors
- Panel Popper



ITEM NO.	PART NUMBER	DESCRIPTION	QTY.
A	AG1011-00	HOSE CLAMP, #88	1
B	AG1019-00	HOSE CLAMP, #56	2
C	AI1068-00	BOLT, HEX HEAD, 1/4"-20	6
D	AI1073-00	WASHER, FLAT, 1/4"	8
E	AI1074-00	LOCKNUT, NYLON, 1/4"-20	2
F	AI1309-00	WASHER, LOCK, 5/16"	4
G	AI1563-00	GROMMET	2
H	AI1678C-00	STRAIGHT COUPLER	1
I	AI1701-01	CCV QUICK CONNECT	1
J	AI1717C-01	TUBE SEAL	1
K	AI1718C-00	BOX PLUG	1
L	AI1762-00	PLASTIC RIVET	4
M	AI1948C-00	IAT GROMMET	1
N	AI2165C-00	SNORKEL TUBE SEAL	1
P	AI2538C-00	SNAP-IN LID SEAL	1
O	AI2166-01	CLEAR LID	1
Q	AL1346-00	INTAKE TUBE	1
R	AL1346B-00	AIR BOX	1
S	AL1346S-00	AL1346S-00	1
T	KF-1069	AIR FILTER	1

# STEP 1

With the ignition switched off and the parking brake set. Disconnect the negative battery cable on the driver side.

**IMPORTANT:** Failure to disconnect the battery for a minimum of 2 hours may cause the Check Engine Light to illuminate upon completion of the installation or subsequent operation. **DO NOT SKIP THIS STEP!**



## STEP 2

Press down on the plastic clip to disengage the lock on the fitting then pull away to disconnect the CCV hose.



## STEP 3

Press down on the tab then disconnect the IAT sensor harness from the IAT sensor.



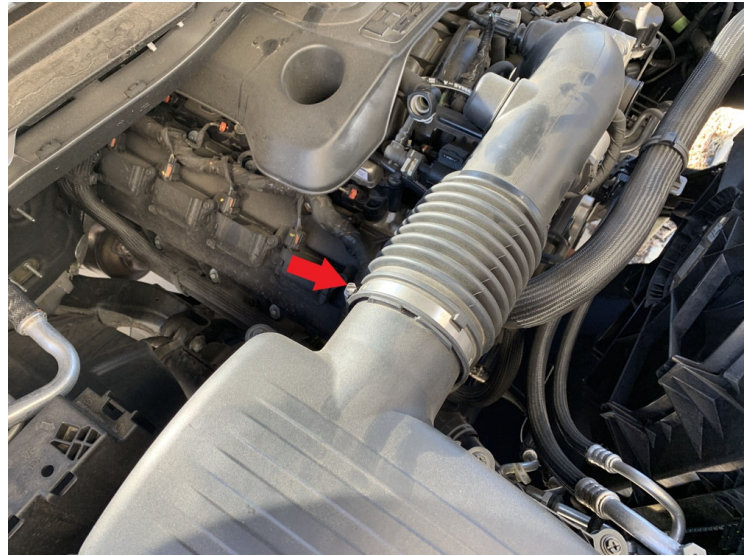
## STEP 4

Loosen the hose clamp at the throttle body then pull the intake tube away from the throttle body.



## STEP 5

Loosen the hose clamp at the intake box then completely remove the intake tube from the vehicle.



## STEP 6

Remove the two 8mm screws underneath the front passenger side wheel liner.



## STEP 7

Lift the intake box to unseat the grommets from the intake box tray then remove from the intake box from the vehicle.



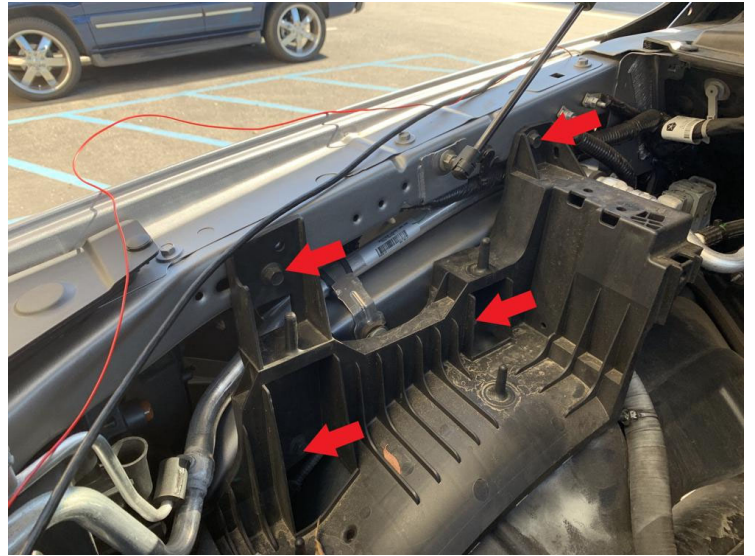
## STEP 8

Unclip the five wire harness clips attached to the intake box tray and one attached to the ac line.



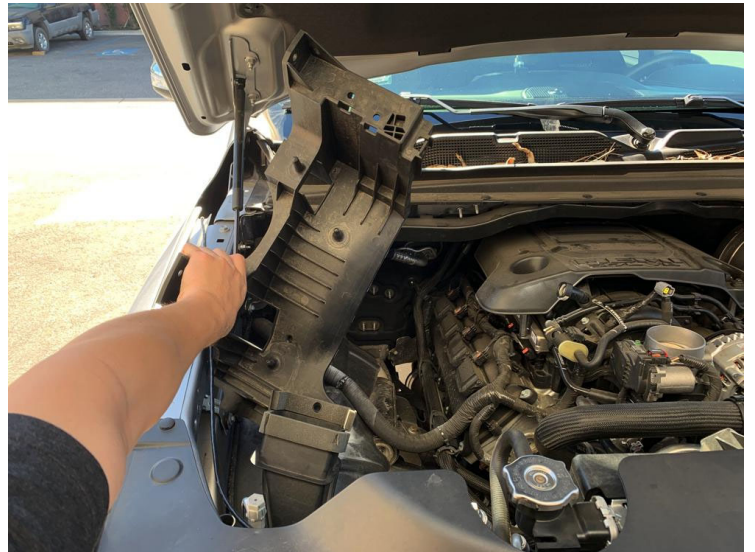
## STEP 9

Remove the four bolts securing the intake box tray. Set two bolts aside, they will be used in Step 21.



## STEP 10

Remove the intake box tray and intake inlet from the vehicle.



## STEP 11

Install the Tube Seal (E) onto the Intake Box (A).



## STEP 12

Install the two Grommets (J) onto the Intake Box (A).



## STEP 13

Determine if you want to install the Box Plug (I) onto the Intake Box (A) or leave the secondary inlet open. If the Box Plug is desired, simply press the Box Plug onto the box opening until the box plug snaps into place.

**When to use the Box Plug?**



Stock intake boxes are a significant contributor to poor air flow which is why S&B designs custom air boxes with secondary and/or enlarged openings. With that said, S&B recognizes the benefits of cooler air, so we have included a plug to seal off the opening if desired. For optimal performance, we recommend that the intake be used without the box plug, except in conditions of extreme heatwave.



## STEP 14

Install the Quick Connect Fitting (M) into the Intake Tube (B) until hand tight, then use a crescent wrench and tighten it another one to two complete turns.

**IMPORTANT:** Do not over tighten, as the Quick Connect Fittings can break or the threaded inserts may strip!



## STEP 15

Install the IAT Sensor Grommet (F) onto the Intake Tube (B).



## STEP 16

Use a Flat Blade Screwdriver to carefully prop up the

locking tab to assist in removing the IAT sensor. Turn the sensor counterclockwise to unlock then pull out.



## STEP 16B

Install the IAT sensor into the Intake Tube (B).



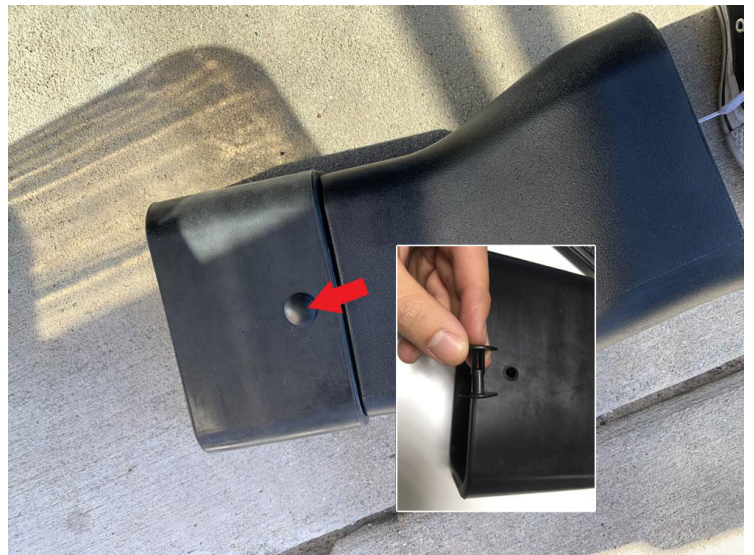
## STEP 17

Install the Coupler (G) with the two #56 Hose Clamps (N) onto the throttle body then tighten the hose clamp on the throttle body. Do not overtighten. Leave the other hose clamp for the Intake Tube (B) loose.



## STEP 18

Install the Snorkel Tube Seal (D) onto the Snorkel Tube (C) then press together the Plastic Rivets (V) to secure. You should be able to hear the plastic rivets locking into place.



## STEP 19

Install the Snorkel Tube and Snorkel Tube Seal (C & D) assembly onto the stock elbow inlet.



## STEP 20

Install the Intake Box (A) into the vehicle and slightly tip the Snorkel Tube (C) assembly to align the mounting holes with the intake box.



## STEP 20B

Install the Bolts (P), Lock Washer (S) and Washer (Q).  
Do not overtighten.



## STEP 21

Align the two mounting holes on the Intake Box (A) with the fender and use the bolts removed in Step 9 to fully secure the intake box. Do not fully tighten, leave the bolts loose so you can still move the box to align the holes on the wheel liner and the intake box.



## STEP 22

Align the mounting holes on the wheel liner with the

Intake Box (A) then tighten with the Bolt (P), Washer (Q) and Lock Nut (R). Fully tighten the two bolts from Step 21. Do not overtighten.



## STEP 23

Install the Intake Tube (B) into the Intake Box (A) and Coupler (G). Tighten the #56 Hose Clamp (N). Do not overtighten.



## STEP 24

Install the Air Filter (H) onto the Intake Tube (B) and tighten the #88 Hose Clamp (O). Do not overtighten.



## STEP 25

Install the Lid Seal (K) onto the grooves on top of the Intake Box (A).





## STEP 26

Make sure all hose clamps and bolts are fully secured then remove the protective covering from the Clear Lid (L).



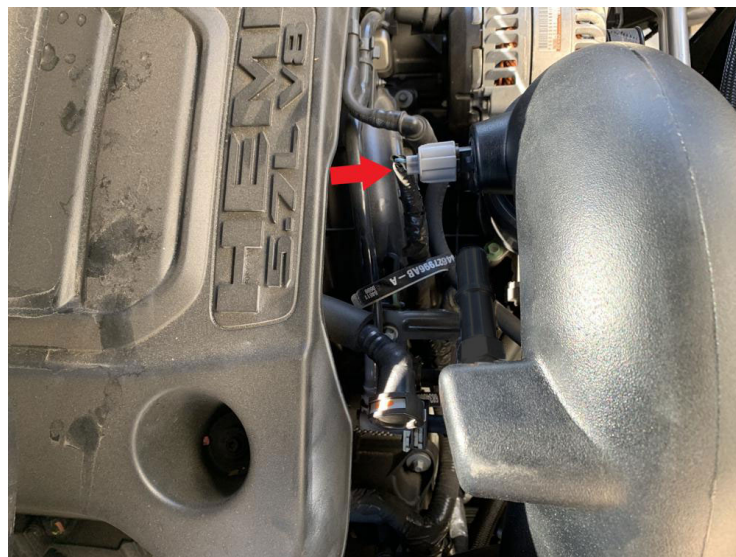
## STEP 27

Place the Clear Lid (L) on top of the Intake Box (A) then secure with the Lid Screws (U) and Washers (T). Do not overtighten.



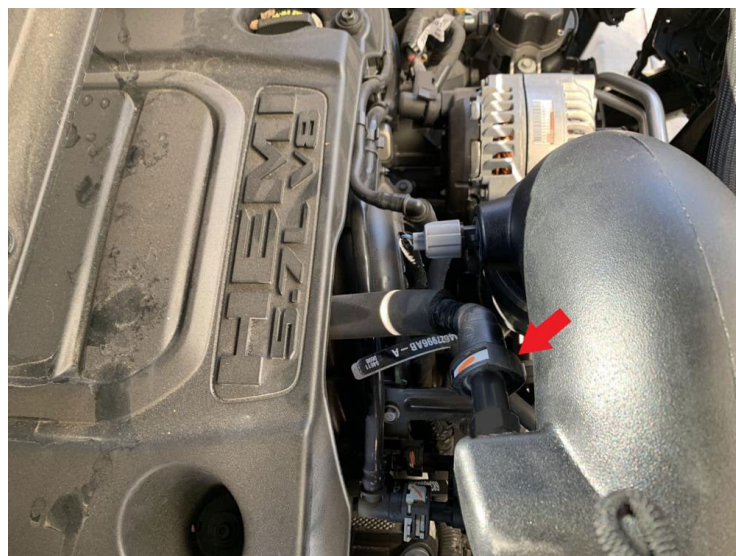
## STEP 28

Reinstall the IAT sensor harness into the IAT sensor.



## STEP 29

Press down on the plastic clip to reinstall the CCV hose into the Quick Connect Fitting (M).



## STEP 30

Reconnect the negative terminal on battery. Inspect your installation, make sure the kit is properly positioned and all fasteners are secured. S&B Filter recommends keeping all stock parts in case you would ever need to reinstall the stock intake.

Affix the ID label near the intake kit. The installation is now complete.

