

INSTALL INSTRUCTIONS FOR 75-5102

BEFORE YOU START

- Please read the entire product guide before proceeding.
- Ensure all parts are present.
- If you are missing any of the components, call our customer support at (909) 947-0015.
- Do not work on your vehicle while the engine is hot.
- Make sure the engine is turned off and the vehicle is in Park or the Parking Brake is set.
- Note: This intake kit may not fit with the following Aftermarket Parts installed: Trucks with Remote Start option, Body Lift or Lowering Kit, Custom Hood, Throttle Body Spacer/ Upgrade

REQUIRED TOOLS

- 8mm, 10mm Socket and Wrench
- T20 Safety Torx
- Phillips Screwdriver



ITEM	QTY.	DESCRIPTION	P/N	ITEM	QTY.	DESCRIPTION	P/N
A	1	INTAKE BOX	AL1241B-00	L	4	WASHER, RUBBER	AI1571-00
B	1	CLEAR LID	AI1716-00	M	2	SCREW, HEX, M6X1.00X25	AI1415-00
C	1	LID SEAL	AI1766-04	N	2	WASHER, M6	AI1535-00
D	1	AIR FILTER	KF-1035	O	4	SCREW, TRUSS, 1/4-20	AI1684-00
E	1	TUBE SEAL	AI1717C-01	P	1	FILTER MINDER GROMMET	AI1563-00
F	1	FENDER SEAL	AI1723C-00	Q	1	MAF PLATE	AI1722-00
G	1	AIR BOX PLUG	AI1778C-00	R	1	MAF GASKET	AI1777-00
H	1	INTAKE TUBE	AL1285-00	S	1	FILTER MINDER PLUG	AI1705-00
I	1	HOSECLAMP, #80	AG1010-00	T	1	COUPLER	AI1321C-01
J	2	HOSECLAMP, #64	AG1008-00				
K	2	SCREW, PHILLIPS, 8-32X3/4	AI1837-00				

STEP 1

With the ignition switched off and the parking brake set, disconnect the negative battery cable on both batteries.

IMPORTANT: Failure to disconnect the battery for a minimum of 2 hours may cause the Check Engine Light to illuminate upon completion of the installation or subsequent operation. **DO NOT SKIP THIS STEP!**



STEP 2

Disconnect the MAF sensor harness.



STEP 3

Remove the stock intake tube from the vehicle.
Loosen the hose clamp at the turbo and stock intake box with a 5/16 Nut Driver or Flat Blade Screwdriver.



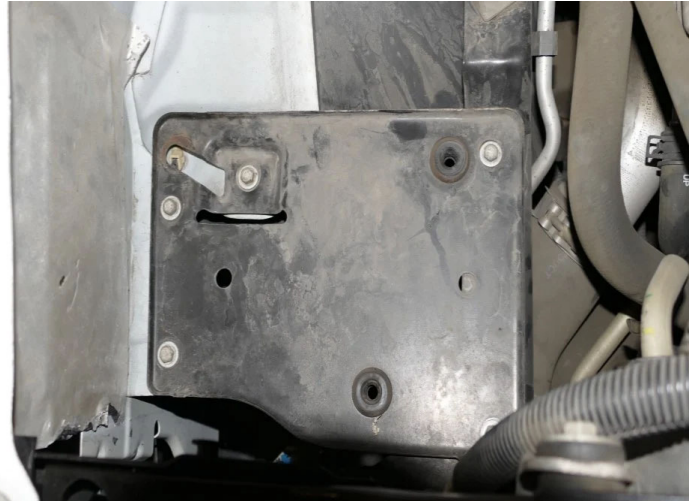
STEP 4

Remove the stock intake box by lifting up to unseat the two prongs from the airbox tray underneath.



STEP 5

Remove the five screws securing the factory airbox tray with a 10mm Socket or Wrench.



STEP 6A

If you haven't done so already, remove the stock foil from the inner fender. This will allow for additional airflow with our kit.



STEP 6B

Continue from 6a.



STEP 7

Install the Tube Seal (E) onto the Intake Box (A).



STEP 8

Install the Fender Seal (F) onto the Intake Box (A).



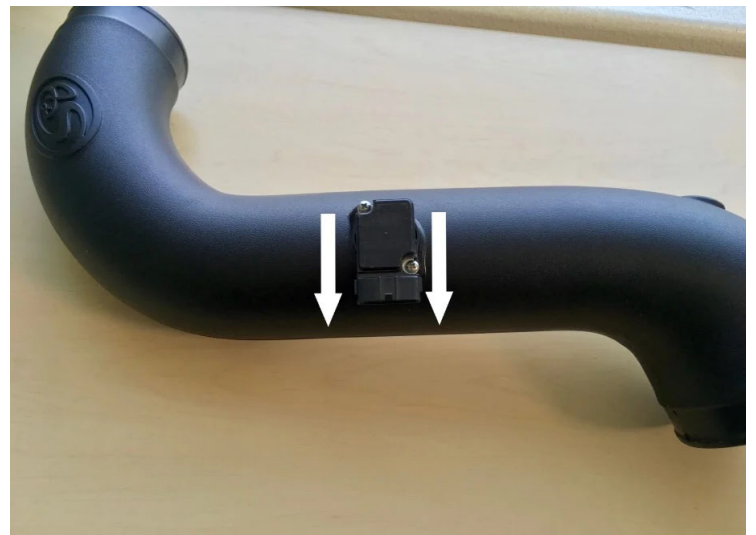
STEP 9

Carefully remove the MAF sensor from the stock intake tube with a T20 Safety Torx. Use the provided Foam Gasket (R), MAF Plate (Q), and 8-32 Screws (K) to install the MAF sensor onto the Intake Tube (H) with a Screwdriver. The MAF sensor should be installed in the same orientation as shown below.

Note: The MAF connector should be facing the coolant reservoir when installed in the vehicle.



STEP 9 (IMAGE 2)



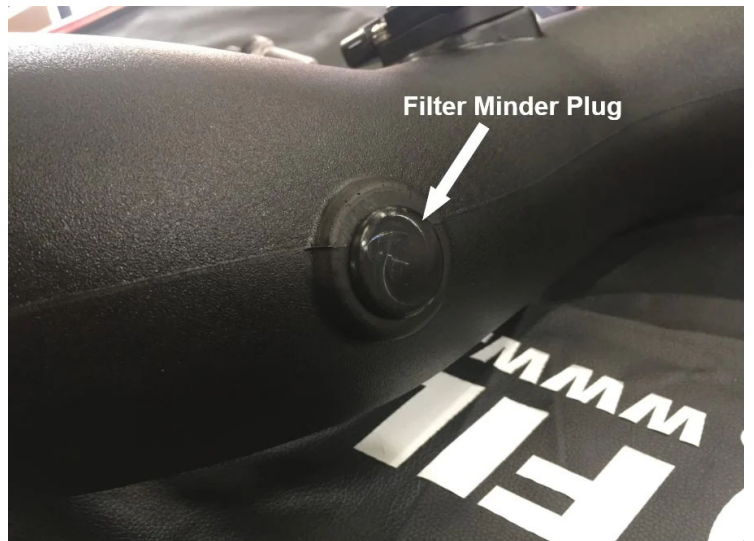
STEP 10

Slide the Coupler (T) and two #72 Hose Clamps (J) onto the Intake Tube (H). Tighten the hose clamp closest to the tube. Leave the other end loose.

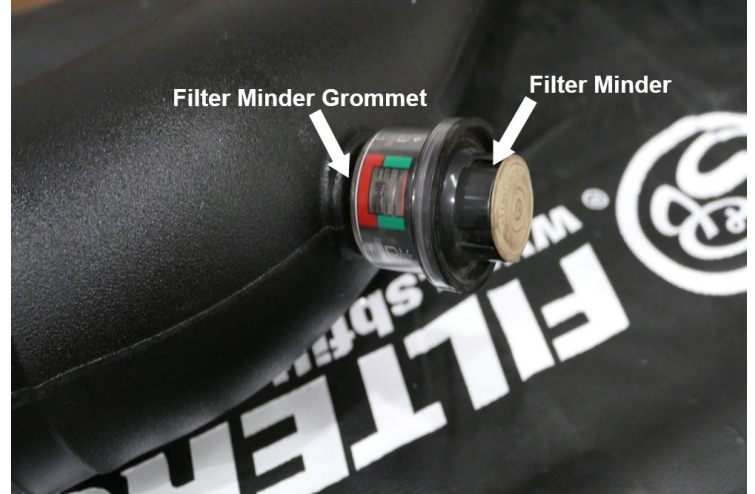


STEP 11

Decide whether or not you want to reuse the stock filter minder. Insert the Filter Minder Plug (S) into the Air Tube (H) if you decide to leave the stock filter minder out, otherwise, insert the Filter Minder Grommet (P) with the filter minder.



STEP 11 (IMAGE 2)



STEP 12

Install the Airbox (A) into the vehicle. Secure the airbox using the provided M6 Screws (M) and Washers (N).



STEP 13

Decide to install or leave out the Air Box Plug (G).



STEP 14

Place the Air Filter (D) into the Air Box (A) with Hose Clamp #80 (I). Do not tighten the hose clamp.



STEP 15

Insert the Air Tube (H) first into the Airbox (A) and then slide the other end of the Coupler (T) onto the turbo mouthpiece. Tighten the #72 Hose Clamp (M) at the turbo.



STEP 16

Slide the Air Filter (D) onto the Air Tube (H) and tighten the #80 Hose Clamp (I).



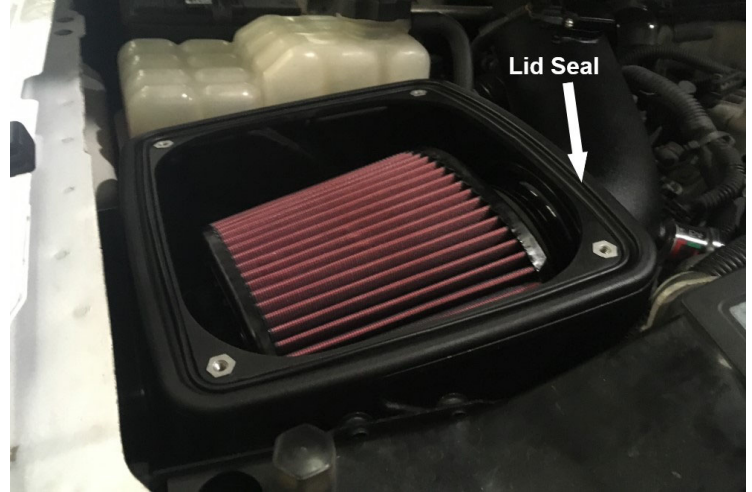
 **STOP! READ
THIS BEFORE
CONTINUING THE
INSTALL**

If your kit came with our new snap-in lid design, please proceed to **STEP 20** to install your snap-in lid. If your lid is the traditional screw in lid, please proceed to the next step.

STEP 17

Install the Lid Seal (C) into

the Airbox (A) grooves.



STEP 18

Remove the protective covering from the Clear Lid (B).



STEP 19

Place the Clear Lid (B) on top of the Airbox (A) and secure the lid using the 1/4-20 Screws (O) and Washers (L) with a Screwdriver.

Go To Step 23



STEP 20

For Snap-In Lids Only

Remove the protective covering from the Clear Lid.



STEP 21

For Snap-In Lids Only

Stretch silicone lid seal around the perimeter of the clear lid. It should be a snug fit.



STEP 22

For Snap-In Lids Only

The notch on the lid and the tab of the lid seal should mate in the same corner.



STEP 23

Reconnect the MAF sensor harness.



STEP 24

Reconnect the negative terminal on both batteries. Inspect your installation, make sure the kit is properly positioned and all fasteners are secure. Affix the CARB and ID label near the intake kit. The installation is now complete.

