

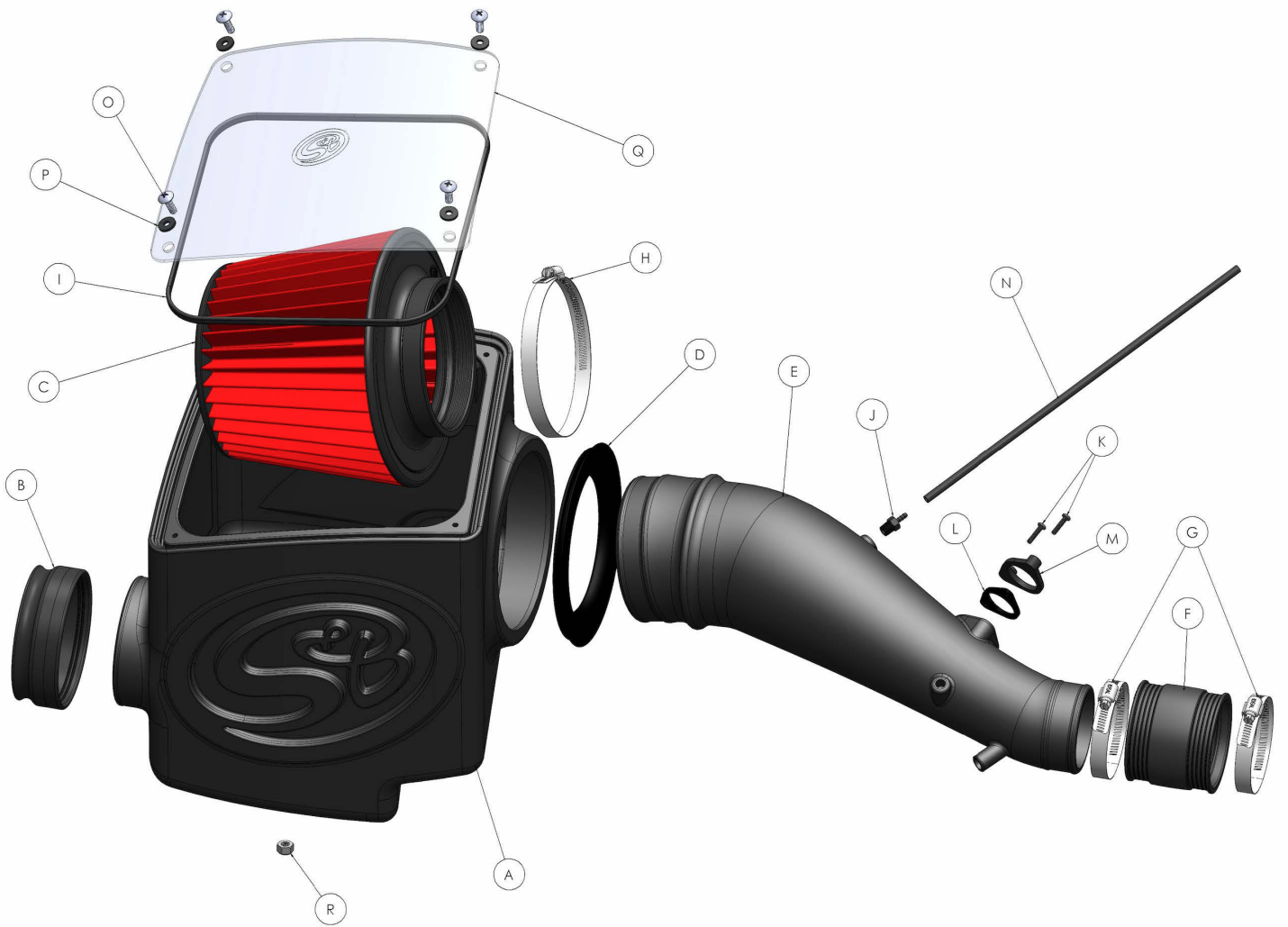
INSTALL INSTRUCTIONS FOR 75-5095

BEFORE YOU START

- Please read the entire product guide before proceeding.
- Ensure all parts are present.
- If you are missing any of the components, call our customer support at (909) 947-0015.
- Do not work on your vehicle while the engine is hot.
- Make sure the engine is turned off and the vehicle is in Park or the Parking Brake is set.
- Note: This intake kit may not fit with the following Aftermarket Parts installed: Body Lift or Lowering Kit, Custom Hood, Throttle Body Spacer / Upgrade

REQUIRED TOOLS

- 8mm, 10mm, 12mm Wrench/Socket
- Phillips Screwdriver
- Adjustable Wrench
- Panel Removal Tool
- Pliers



| ITEM | QTY | DESCRIPTION | PART NUMBER | HARDWARE PACKS |
|------|-----|---------------------------------------|-------------|----------------|
| A | 1 | INTAKE BOX | AL1279B-00 | HP1454-00 |
| B | 1 | FENDER SEAL | AI1859C-00 | AG1007-00 |
| C | 1 | AIR FILTER | KF-1053 | HP1452-00 |
| D | 1 | TUBE SEAL | AI1717C-00 | AI1860-00 |
| E | 1 | INTAKE TUBE | AL1279-00 | AI1861-00 |
| F | 1 | COUPLER | AI1806C-00 | AI1252-00 |
| G | 2 | HOSE CLAMP, #52 | AG1007-00 | HP1453-00 |
| H | 1 | HOSE CLAMP, #80 | AG1010-00 | AI1857-00 |
| I | 1 | LID SEAL | AI1766-02 | AI1736-00 |
| J | 1 | BARBED HOSE FITTING, 1/8" NPT X 3/16" | AI1857-00 | HP1403-00 |
| K | 2 | SCREW, 8/32" X 3/4" | AI1252-00 | AI1684-00 |
| L | 1 | MAF GASKET | AI1861-00 | AI1571-00 |
| M | 1 | MAF PLATE | AI1860-00 | AI1934-01 |
| N | 1 | VACUUM HOSE | AI1934-00 | HP1455-00 |
| O | 4 | SCREW, 1/4" -20 X 3/4" | AI1684-00 | AI1862-00 |
| P | 4 | WASHER, 1/4" -20 | AI1571-00 | AI1766-02 |
| Q | 1 | CLEAR LID | AI1862-00 | |
| R | 1 | LOCK NUT, M6 NYLOCK | AI1736-00 | |

AM0327-00 REV-D 11/06/2018

STEP 1

With the ignition switched off and the parking brake set, disconnect the negative battery cable on the battery.

IMPORTANT: Failure to disconnect the battery for a minimum of 2 hours may cause the Check Engine Light to illuminate upon completion of the installation or subsequent operation. **DO NOT SKIP THIS STEP!**



STEP 2

Remove the two nuts securing engine cover then lift up and remove the engine cover from the vehicle. Set one of the nuts aside, the hardware will be reused in Step 18.



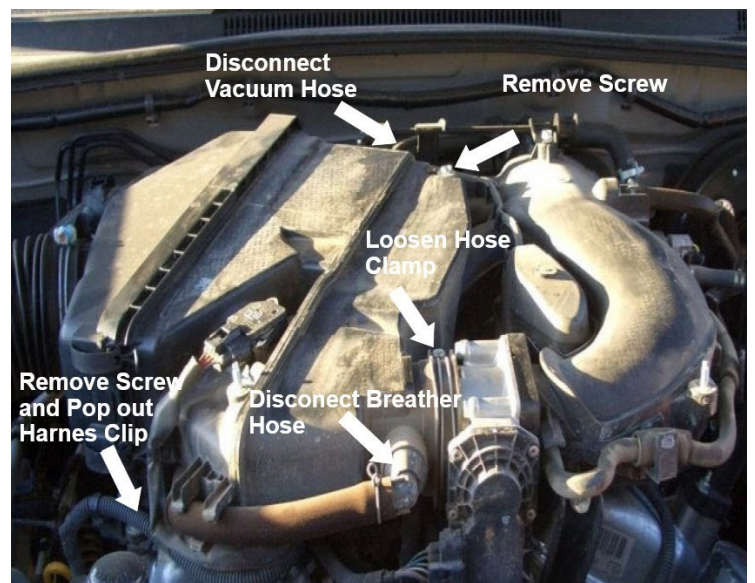
STEP 3

Disconnect the MAF sensor electrical connector from the sensor.



STEP 4

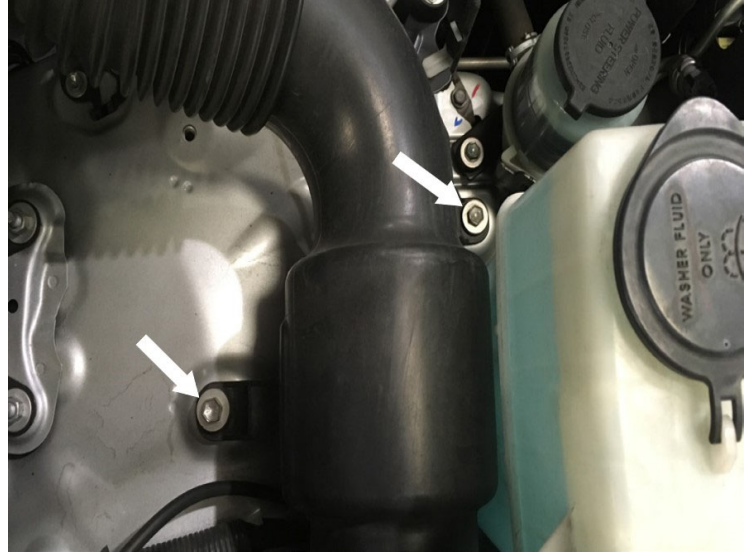
Disconnect the breather and vacuum hose. Remove the two mounting screws on the intake box. Loosen the hose clamp on the throttle body. Pop-out the wire harness clip.



STEP 5

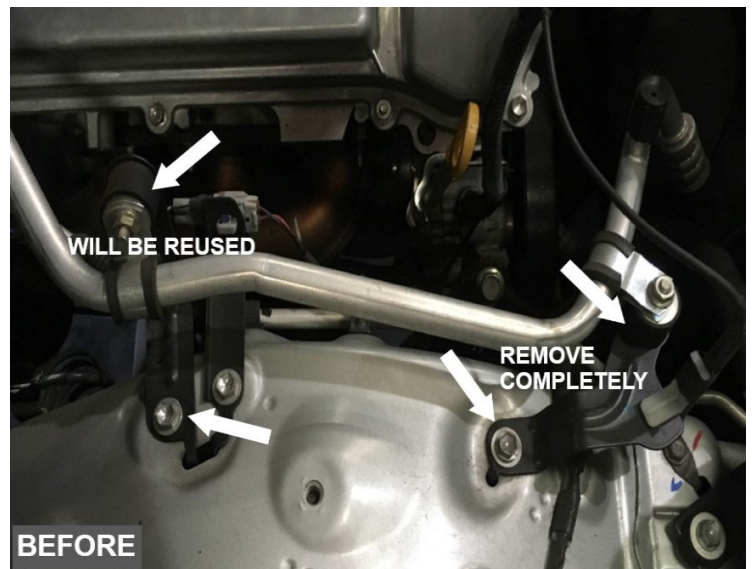
Remove the two screws securing on the stock tube then remove the entire air intake assembly from the vehicle. The two screws will

be reused in Step 11.

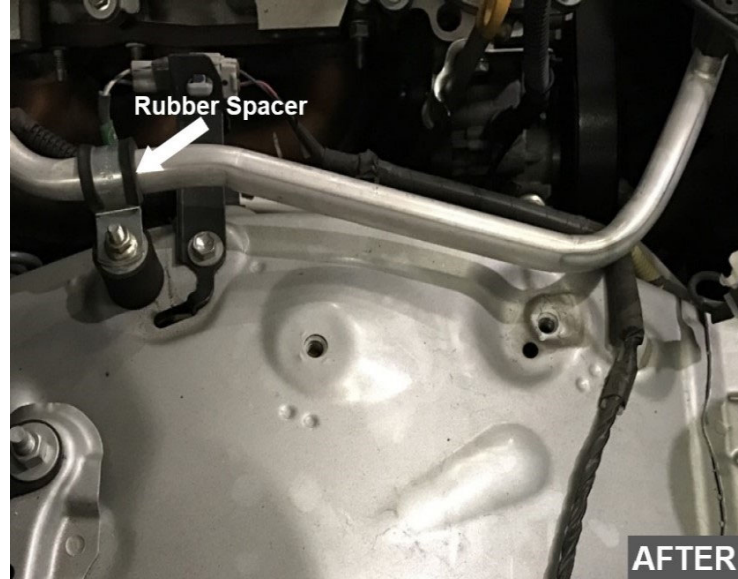


STEP 6

Remove the two brackets securing the AC line hose clips. Remove the screw mounted to the chassis on each bracket. Only the screw from the left AC line bracket will be reused in Step 18. Remove the lock nuts securing both the rubber spacers to the hose clips. Once everything is removed, install the rubber spacer with the AC line clips into the chassis and tighten with one of the locknuts removed.

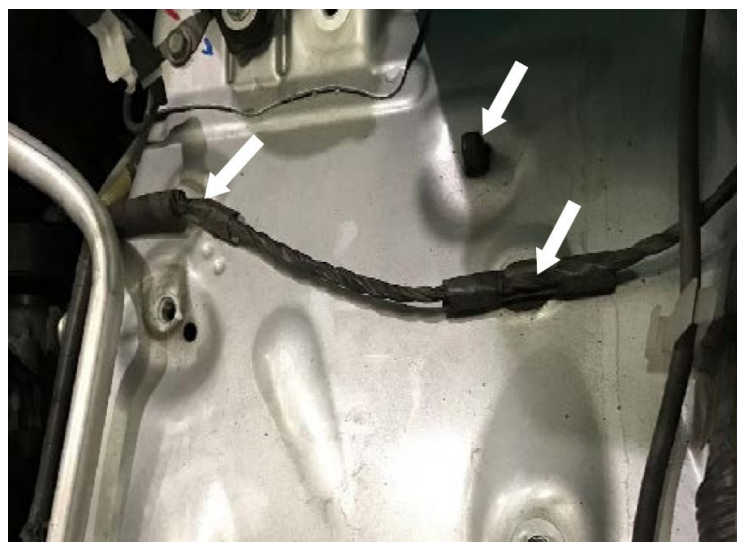


STEP 6 (IMAGE 2)



STEP 7

Pop-out the three plastic clips. One of the holes will be used to secure the Intake Box (A) in Step 11.



STEP 8

Install the Intake Tube Seal (D) onto the Intake Box (A).



STEP 9

Install the Fender Seal (B) onto the Intake Box (A).



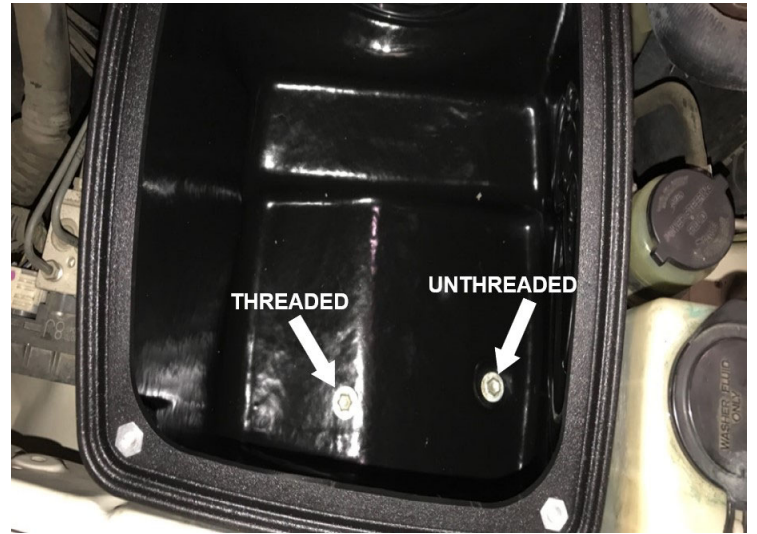
STEP 10

Place the Intake Box (A) into the truck.

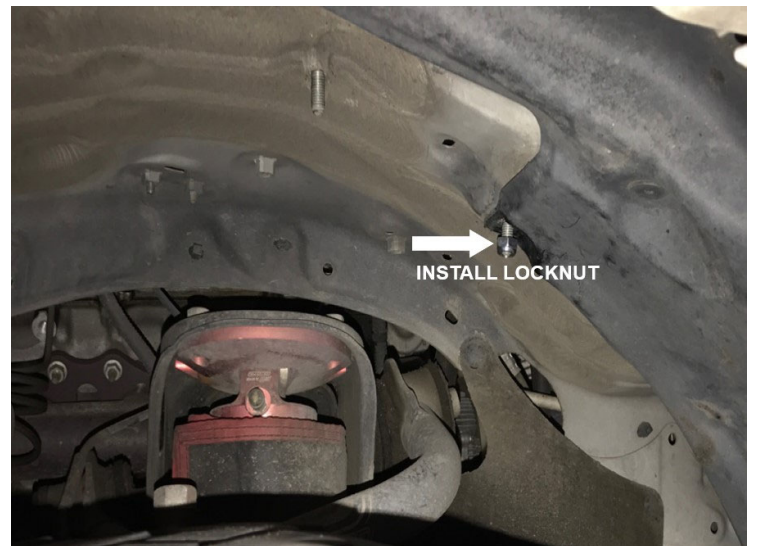


STEP 11

Reinstall the stock screws removed from Step 5 to secure the Intake Box (A). Install an M6 Locknut (R) on the bolt with the hole that is not threaded. Make sure that the bolt goes through the hole through the wheel well cover before installing the locknut from underneath the wheel well.



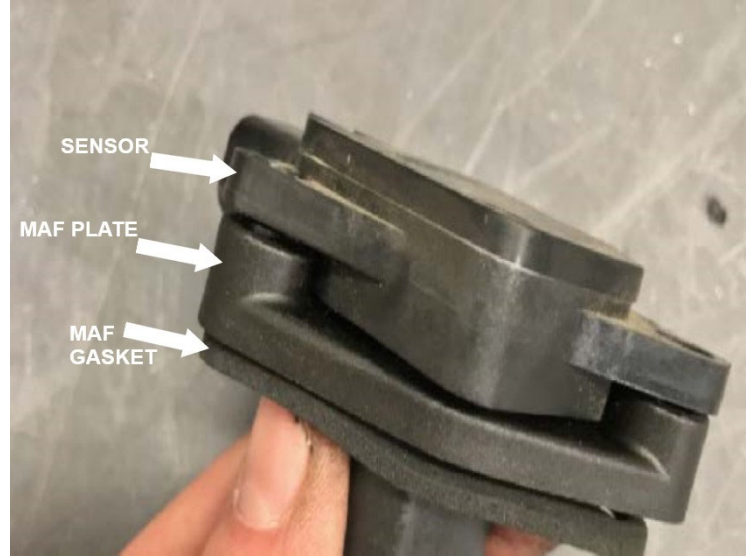
STEP 11 (IMAGE 2)



STEP 12

Carefully remove the MAF sensor from the stock intake tube. Use the supplied 8-32

Screws (K), MAF Plate (M), MAF Gasket (L) to install the sensor onto the Intake Tube (E). Install the Vacuum Hose Barb (J) until finger tight, then turn it one to two complete turns with a wrench. Do not over tighten.



STEP 12 (IMAGE 2)



STEP 13

Install the Coupler (F) and two #52 Hose Clamps (G) onto the intake tube. Leave both hose clamps loose, push coupler up the tube slightly.



STEP 14

Place the Air Filter (C) into the Intake Box (A). by first having the filter top facing the front of the vehicle then sliding it in, then turn the filter to the tube outlet. The air filter should be in the same position as shown below when inserting into the intake box.



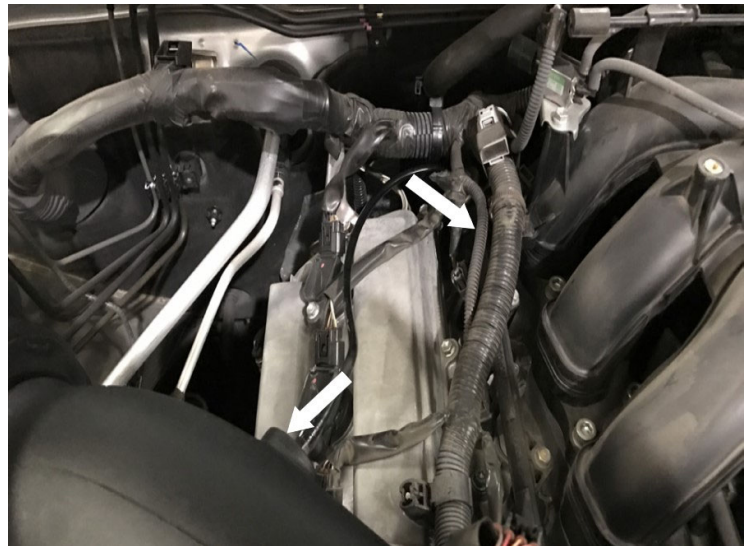
STEP 15

Insert the Intake Tube (E) through the Tube Seal (D) into the Intake Box (A) then slide the Air Filter (C) onto the intake tube. Tighten the #80 Hose Clamp (H).



STEP 16

Remove the stock vacuum hose and use the Vacuum Hose (N) provided to connect the Vacuum Hose Barb (J) and the engine.

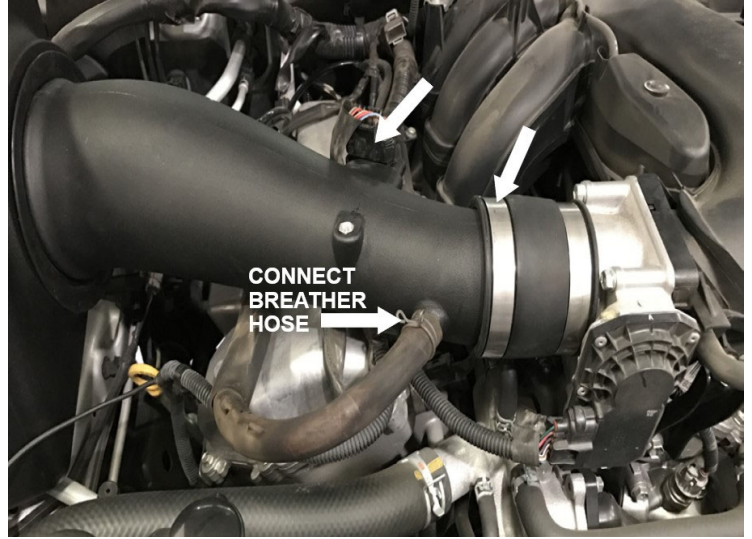


STEP 17

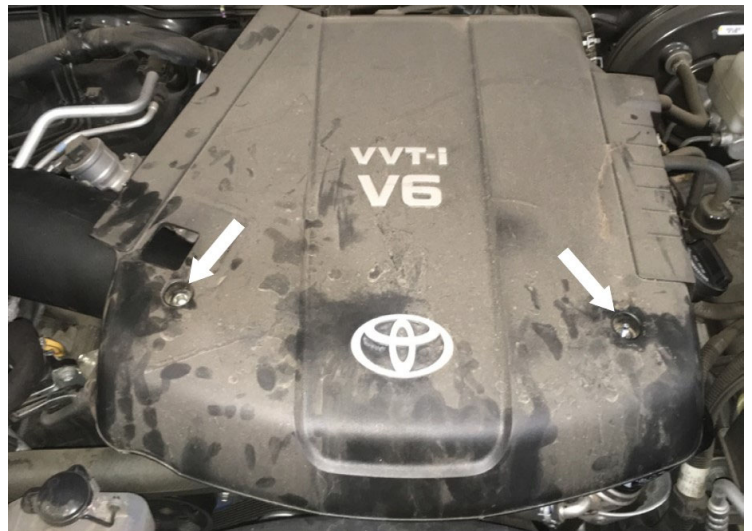
Install the Intake Tube (E) onto the throttle body. Tighten the #52 Hose Clamp (G) at the intake tube only. Leave the hose clamp at the throttle body loose.

Reconnect the Breather Hose. Reconnect the MAF sensor connector into the MAF sensor. Cut the electrical tape at the main harness to give the connector extra slack and route the connector underneath the Intake Tube to connect into the sensor.

Note: If you want to reinstall the engine cover, align the insert on the intake tube with the two mounting points on the engine cover. Make any adjustments to the intake tube if necessary then tighten the #52 Hose Clamp (G) at the throttle body.



STEP 17 (IMAGE 2)

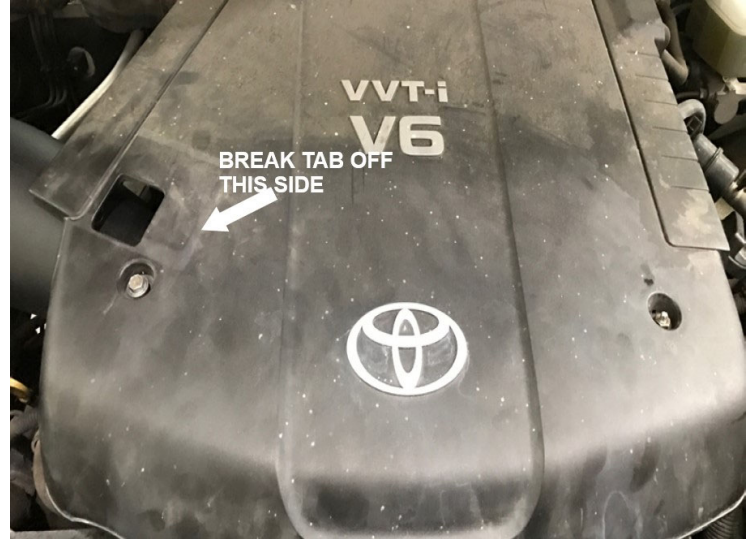


STEP 18

(OPTIONAL) Reinstall the engine cover. Reuse the nut

removed in Step 2 and screw removed in Step 6. You may have to rotate the tube for the threaded insert to line up properly.

Note: You will have to break off the small tap on the bottom of the engine cover on the passenger side so the engine cover sits flush with the intake tube.



STEP 19

Press the Lid Seal (I) into the grooves on top of the Airbox (A).



STEP 20

Remove the protective covering on the Clear Lid (Q).



STEP 21

Install Clear Lid (Q) on top of the Air Box (A) with the 1/4-20 Screws (O) and Washers (P).



STEP 22

Inspect your installation, make sure the kit is properly positioned and all fasteners are secured. Keep all stock parts in case you would ever need to reinstall the stock intake assembly. Affix the ID label near the intake kit. The