

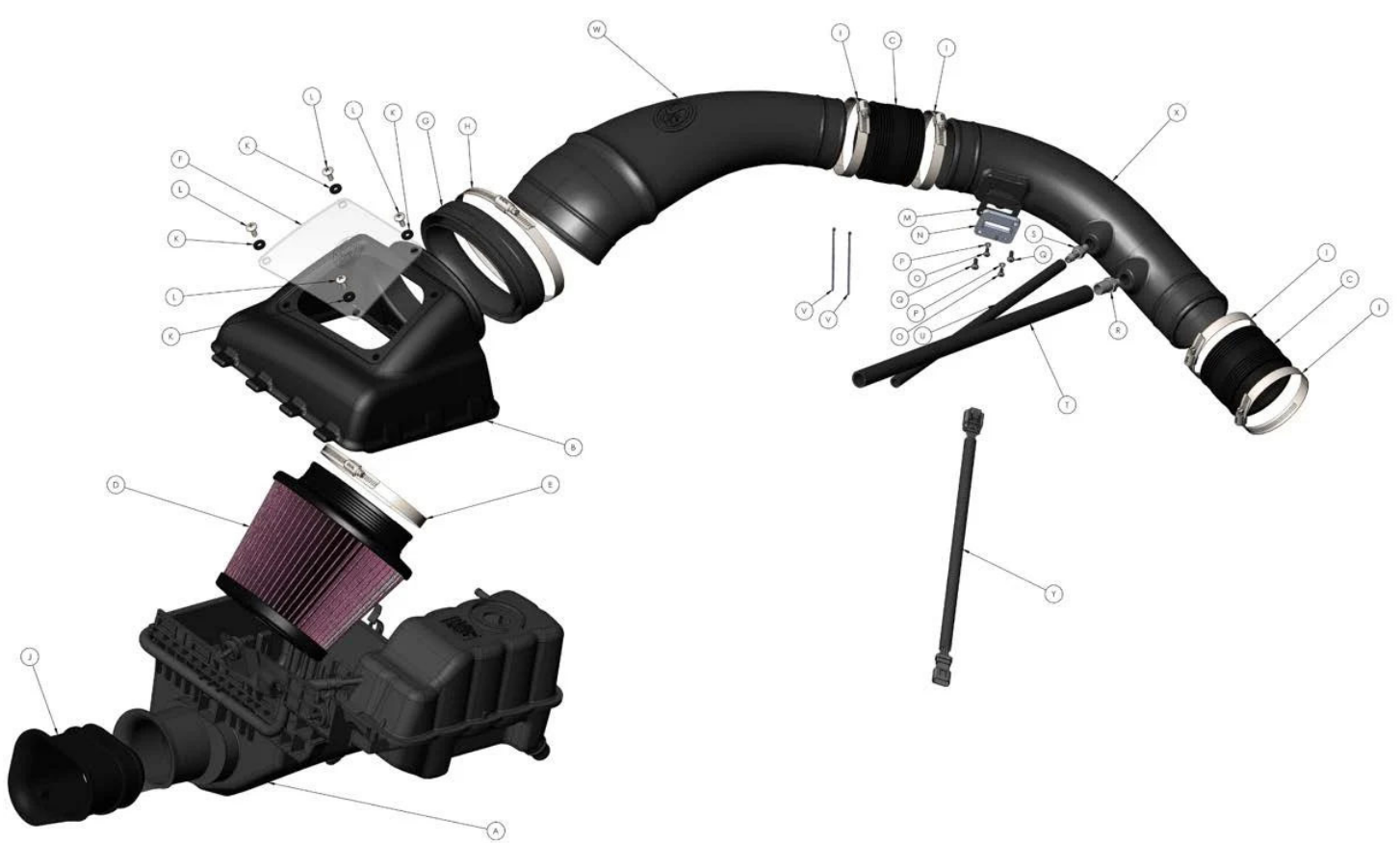
# INSTALL INSTRUCTIONS FOR 75-5077

## BEFORE YOU START

- Please read the entire product guide before proceeding.
- Ensure all parts are present.
- If you are missing any of the components, call our customer support at (909) 947-0015.
- Do not work on your vehicle while the engine is hot.
- Make sure the engine is turned off and the vehicle is in Park or the Parking Brake is set.
- Note: This intake kit may not fit with the following Aftermarket Parts installed: Body Lift or Lowering Kit, Custom Hood, Throttle Body Spacer / Upgrade

## REQUIRED TOOLS

- 8mm, 10mm, 13mm Wrench & Socket
- Pin Removal Tool or Flat Blade Screwdriver
- 7/16" Wrench and Socket
- 5/16" Nut Driver or Flat Blade Screwdriver
- Phillips Screwdriver
- 1 Set of Torx Wrenches & Allen Wrenches
- 1 Pair of Pliers or similar tool



ITEM	QTY.	DESCRIPTION	P/N	ITEM	QTY.	DESCRIPTION	P/N
A	1	FACTORY INTAKE BOX	-----	O	2	SCREW, PHILLIPS, 8-32 x 3/8"	AI1639-00
B	1	INTAKE BOX COVER	AL1217-00	P	2	WASHER, RUBBER, #8	AI1200-00
C	2	COUPLER	AI1678C-00	Q	2	SCREW, PHILLIPS, 10-32 x 1/2"	AI1640-00
D	1	AIR FILTER	KF-1058	R	1	HOSE BARB, 5/8"	AI1709-00
E	1	HOSE CLAMP, #88	AG1011-00	S	1	HOSE BARB, 3/8"	AI1049-00
F	1	CLEAR LID	AI1607-00	T	1	HOSE, 5/8" x 20"	AI1039-08
G	1	RUBBER CUFF	AI1604C-00	U	1	HOSE, 3/8" x 20"	AI1037-05
H	1	HOSE CLAMP, #104	AG1012-00	V	1	ZIP TIE	AI1212-00
I	4	HOSE CLAMP, #60	AG1008-00	W	1	INTAKE TUBE (FILTER)	AL1230B-00
J	1	FENDER INLET	AI1635C-00	X	1	INTAKE TUBE (THROTTLE)	AL1236-00
K	4	WASHER, SEALING	AI1571-00	Y	1	MAF EXTENSION HARNESS	AI1481-00
L	4	SCREW, TRUSS, 1/4-20 x 5/8"	AI1569-00	Z	1	HOSE CLAMP, #12	AG1030-00
M	1	MAF GASKET	AI1637-00				
N	1	MAF PLATE	AI1209-00				

## STEP 1

With the ignition switched off and the parking brake set, disconnect the negative battery cable on the

passenger side.

**IMPORTANT:** Failure to disconnect the battery for a minimum of 2 hours may cause the Check Engine Light to illuminate upon completion of the installation or subsequent operation. **DO NOT SKIP THIS STEP!**



## STEP 2

Use a Torx wrench to remove the sensor from the factory intake box cover.



## STEP 3

Disconnect the sensor from the harness by pulling the Red tab out and pressing down on the release button.

Place the sensor in a safe location for later install.



## **STEP 4**

Use a 5/16" nut driver to loosen the hose clamp.



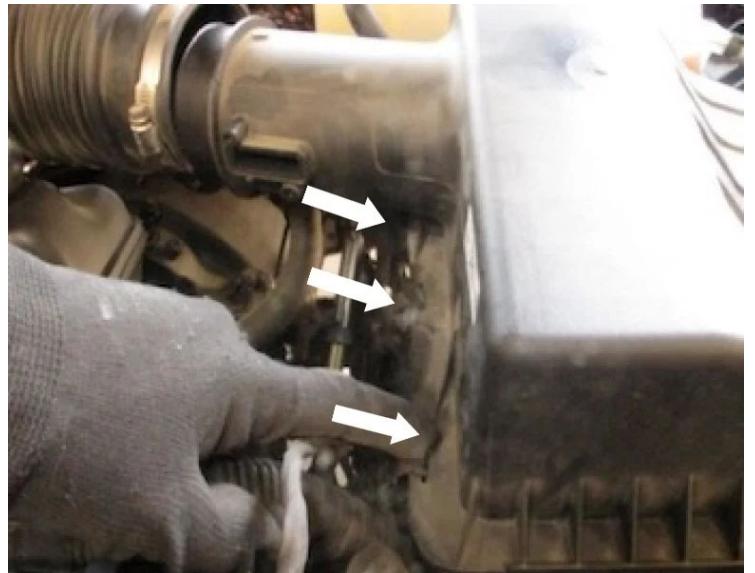
## STEP 5

Once the hose clamp is loose, pull the factory intake tube to the left to separate from the factory intake box cover.



## STEP 6

Remove the factory intake box cover by unfastening the three metal latches that are on the side of the factory intake box.



## STEP 7

Lift to remove the factory intake box cover.



## STEP 8

Remove the factory air filter.



## STEP 9

Remove the two mounting bolts securing the air intake intake box to get to the side air inlet. Remove the factory intake box from the vehicle.



## STEP 10

Loosen the hose clamp by the factory resonator and remove the factory intake tube from the vehicle.



## STEP 10 (IMAGE 2)



## STEP 11

On the right side of the stock resonator box remove the rubber tubing from the box by pulling out and away.





## STEP 12

Remove the second hose from the resonator box by sliding the white tab counter clockwise to release the lock.



## STEP 13

Remove the tube from the hose line connector and the engine which also has a locking tab that needs to be unlocked.



## STEP 13 (IMAGE 2)



## STEP 14

Remove the two bolts on the resonator box, once removed the resonator box can be gently pulled away from the throttle body.



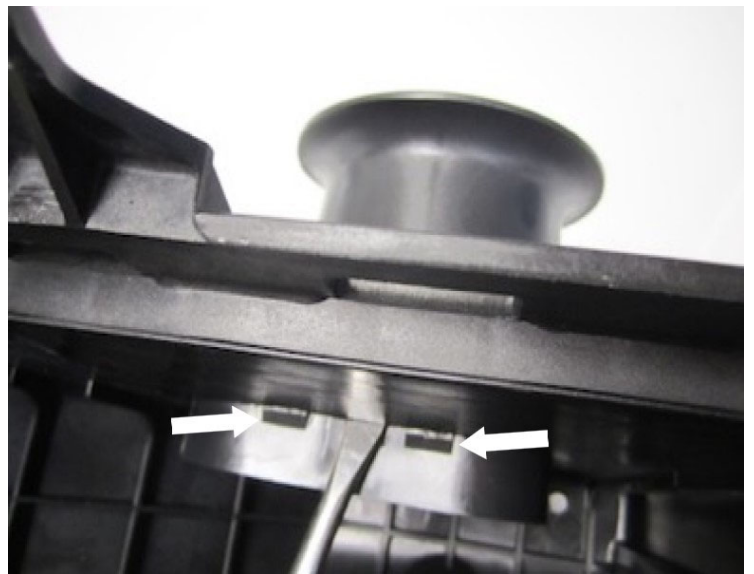
## STEP 15

Remove the stock rubber boot from the throttle body.



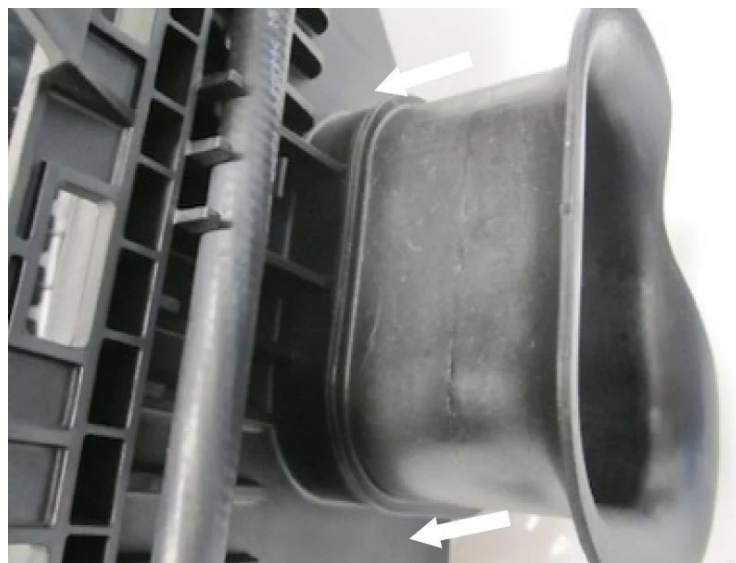
## STEP 16

Remove the side inlet by pushing down on the tabs. A screw driver may be required to loosen the two tabs on top and one tab underneath.



## STEP 17

Install the Fender Inlet (J) into the factory intake box by pushing in firmly until it snaps into place.



## STEP 18

With the Fender Inlet (J) installed. Lower the factory intake box back down and reinstall the factory bolts. Make sure the fender inlet is pushed through the side skirt.



## STEP 19

Install the 5/8" Hose Barb (R) and 3/8" Hose Barb (S) into the Intake Tube (Throttle) (X). Install until

snug and do not over tighten.



## STEP 20

Install the MAF Gasket (M) then the MAF Plate (N) using the 10-32 Screws (Q) onto the Intake Tube (Throttle) (X)

**Note:** The arrows need to point towards each other.



## STEP 21

Install the factory MAF sensor onto the MAF Plate (N) using the 8-32 Screws (O) and Washers (P)



## STEP 22

Connect both Intake Tubes (**Filter & Throttle**) (W & X) using the Coupler (C) and Hose Clamps #60 (I). Leave the hose clamps loose for final adjustments.



## STEP 23

Slide the Coupler (C) and Hose Clamps #60 (I) onto the Intake Tube (**Throttle**) (X). Only tighten down the hose clamp on the tube side leaving the throttle body

side loose for install.



## STEP 24

Install the Rubber Cuff (G) and Hose Clamp #104 (H) onto the Intake Box Cover (B) making sure that the tab on the cuff aligns with the notch.



## STEP 25

Insert the Intake Tube (Filter) (W) into the Intake Box Cover (B) through the Rubber Cuff (G). Please

make sure that the tube is pushed all the way to the stop bead. Tighten Hose Clamp #104 (H). The rubber cuff will accommodate any intake tube movements from engine vibrations.



## STEP 26

Install the Air Filter (D) onto the Intake Tube (Filter) (W). Position the Hose Clamp #88 (E) so that it can be easily accessed through the lid opening. Tighten the hose clamp.



## STEP 27

Install the whole intake



assembly into the factory intake box. Make sure that the tabs on the Intake Box Cover (B) are lined up with the slots on the factory intake box. Once the tabs are in the slots lower the whole intake assembly. Proper installation into the slots will reduce movement.

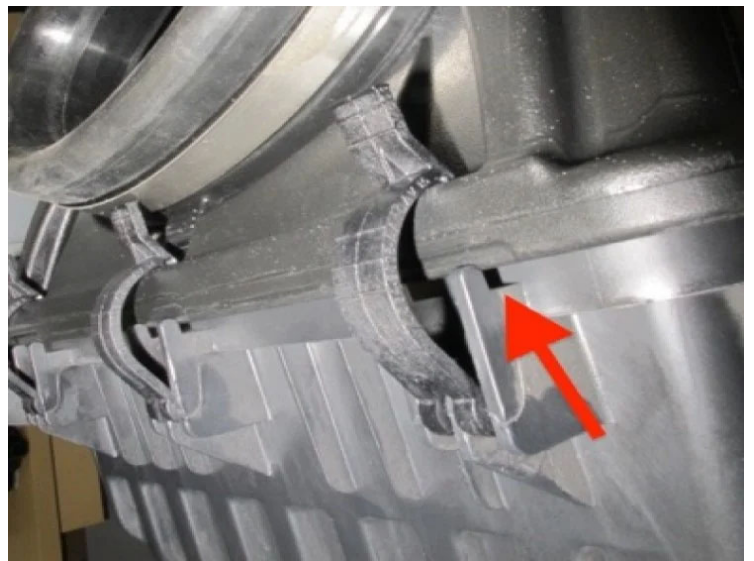


## STEP 27 (IMAGE 2)



## STEP 28

Fasten the three latches from the stock airbox.



## STEP 29

Slide the Coupler (C) over the throttle body and tighten the Hose Clamp #60 (I). Some slight adjustments may need to be made to acquire the proper alignment of both tubes. Tighten all hose clamps on the intake tube and throttle body.



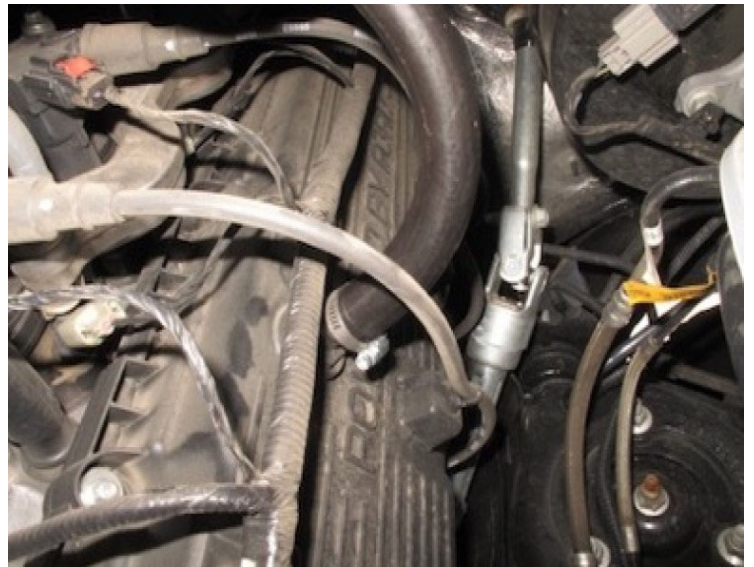
## STEP 30

Connect the provided 5/8" Hose (T) to the 5/8" Hose Barb (R).



## STEP 31

Use Hose Clamp #12 (Z) to tighten down the hose on the engine side.



## STEP 32

Connect the provided 3/8" Hose (U) to the 3/8" Hose Barb (S).



## STEP 33

Connect the other end of the provided 3/8" Hose (U) to the vehicle hose connector.



## STEP 34

Connect the MAF Extension Harness (Y) to the vehicle connector. Zip Tie (V) away from any moving parts.



## STEP 35

Connect the extension harness to the vehicles MAF. Remember to lock the red latch.



## STEP 36

Remove the protective covering from the Clear Lid (F). Fasten the clear lid onto the Intake Box Cover (B) using 1/4-20 Screws (L) and Washers (K).



## STEP 37

Reconnect the negative terminal on the battery. Inspect your installation, make sure the kit is properly positioned and all fasteners are secure. Affix the CARB and ID label near the intake kit. Keep all stock parts in case you would ever need to reinstall the stock intake. The installation is now complete.

