

INSTALL INSTRUCTIONS FOR 75-5076

BEFORE YOU START

- Please read the entire product guide before proceeding.
- Ensure all parts are present.
- If you are missing any of the components, call our customer support at (909) 947-0015.
- Do not work on your vehicle while the engine is hot.
- Make sure the engine is turned off and the vehicle is in Park or the Parking Brake is set.
- Note: This intake kit may not fit with the following Aftermarket Parts installed: Body Lift or Lowering Kit, Custom Hood, Throttle Body Spacer / Upgrade

REQUIRED TOOLS

- 8mm, 10mm, 13mm Wrench & Socket
- Pin Removal Tool or Flat Blade Screwdriver
- 7/16" Wrench and Socket
- 5/16" Nut Driver or Flat Blade Screwdriver
- Phillips Screwdriver
- 1 Set of Torx Wrenches & Allen Wrenches
- 1 Pair of Pliers or similar tool



ITEM	QTY.	DESCRIPTION	P/N	ITEM	QTY.	DESCRIPTION	P/N
A	1	FACTORY INTAKE BOX	-----	O	1	MAF PLATE	AI1209-01
B	1	INTAKE BOX COVER	AL1217-00	P	2	SCREW, PHILLIPS, 10-32 x 1/2	AI1719-00
C	1	RUBBER CUFF	AI1604C-00	Q	2	SCREW, PHILLIPS, 8-32 x 3/8	AI1720-00
D	1	HOSE CLAMP, #104	AG1012-00	R	2	RUBBER WASHER #8	AI1200-00
E	1	CLEAR LID	AI1607-00	S	1	PIPE PLUG	AI1398-00
F	4	SCREW, TRUSS HEAD, 1/4-20 x 5/8	AI1569-00	T	1	HOSE BARB	AI1702-00
G	4	SEALING WASHER	AI1571-00	U	1	HOSE, 3/8 x 20	AI1037-05
H	1	INTAKE TUBE	AL1229-00	V	1	EXTENSION HARNESS	AI1481-00
I	1	AIR FILTER	KF-1058	W	1	FENDER INLET	AI1635C-00
J	1	HOSE CLAMP, #88	AG1011-00				
K	1	COUPLER, STRAIGHT	AI1678C-00				
L	2	HOSE CLAMP, #60	AG1008-00				
M	1	HOSE FITTING	AI1701-00				
N	1	MAF GASKET	AI1637-00				

STEP 1

With the ignition switched off and the parking brake set, disconnect the negative battery cable on the passenger side.

IMPORTANT: Failure to disconnect the battery for a minimum of 2 hours may cause the Check Engine Light to illuminate upon completion of the installation or subsequent operation. **DO NOT SKIP THIS STEP!**



STEP 2

Use a Torx wrench to remove the sensor from the factory intake box cover.



STEP 3

Disconnect the sensor from the harness by pulling the **Red** tab out and pressing down on the release button. Place the sensor in a safe location for later install.



STEP 4

Use a 5/16" nut driver to loosen the hose clamp.

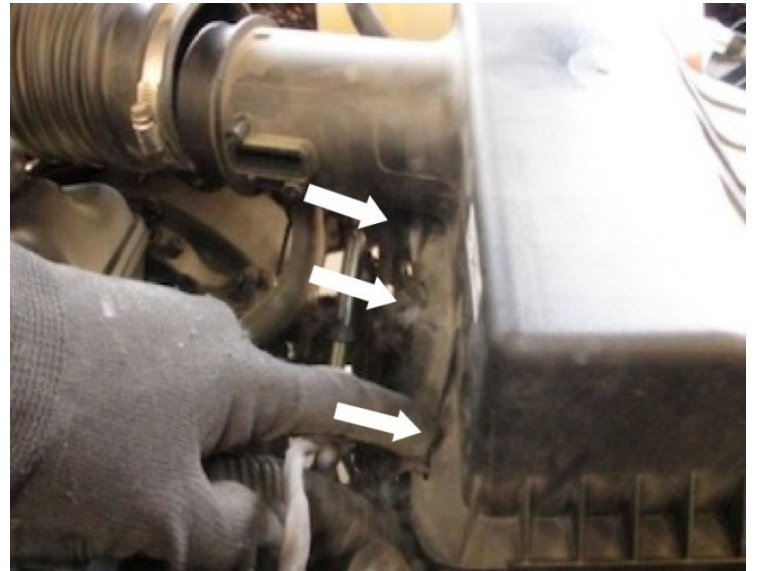


STEP 5

Once the hose clamp is loose, pull the factory intake tube to the left to separate from the factory intake box cover.

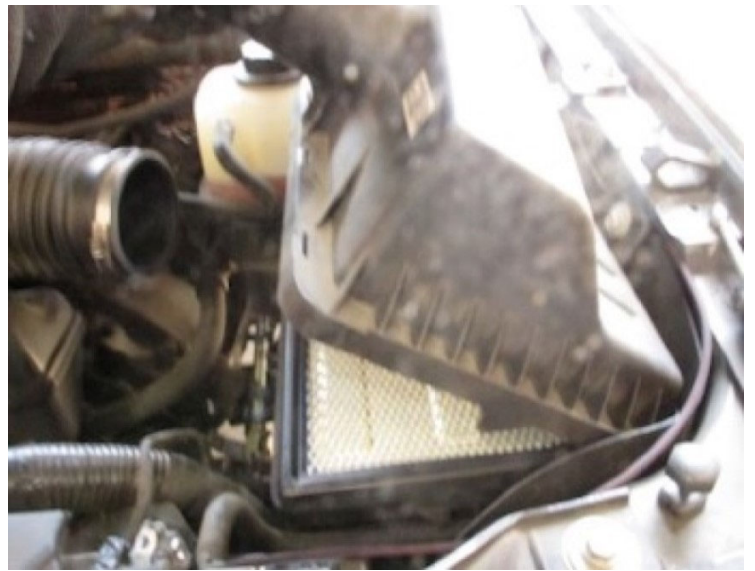
STEP 6

Remove the factory intake box cover by unsnapping the three metal latches that are on the side of the factory intake box.



STEP 7

Lift to remove the factory intake box cover.



STEP 8

Remove the factory air filter.



STEP 9

Remove the two mounting bolts securing the air intake box to get to the side air inlet. Remove the factory intake box from the vehicle.



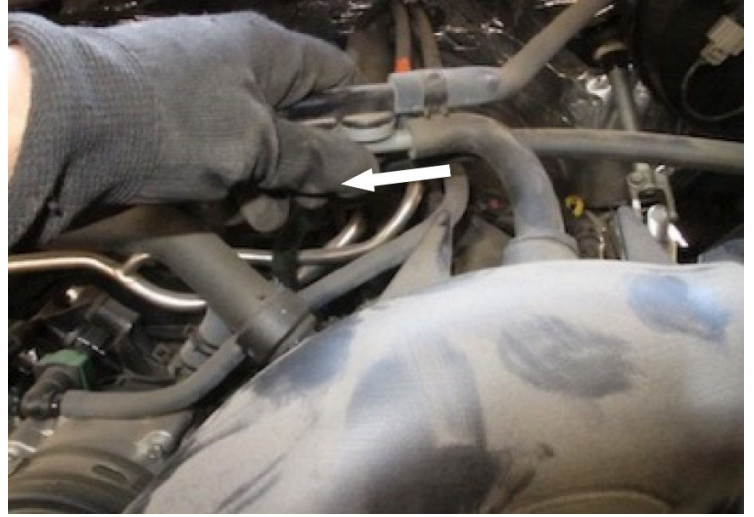
STEP 10

Near the throttle body, disconnect the hose by twisting to unlock the latch and pulling out.



STEP 11

Disconnect the other hose toward the middle of the factory intake tube by pulling the hose off the plastic barb.



STEP 11 (IMAGE 2)



STEP 12

Loosen the hose clamp on the tube connected to the throttle body.



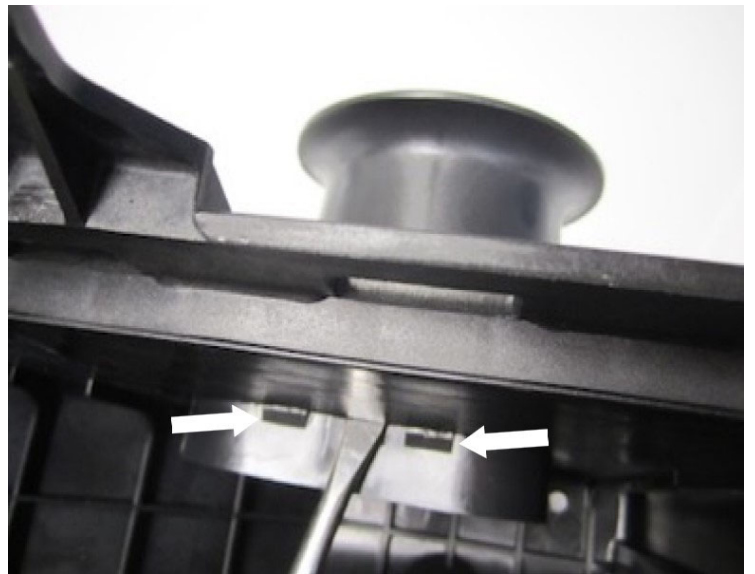
STEP 13

Remove the intake tube assembly from the vehicle.



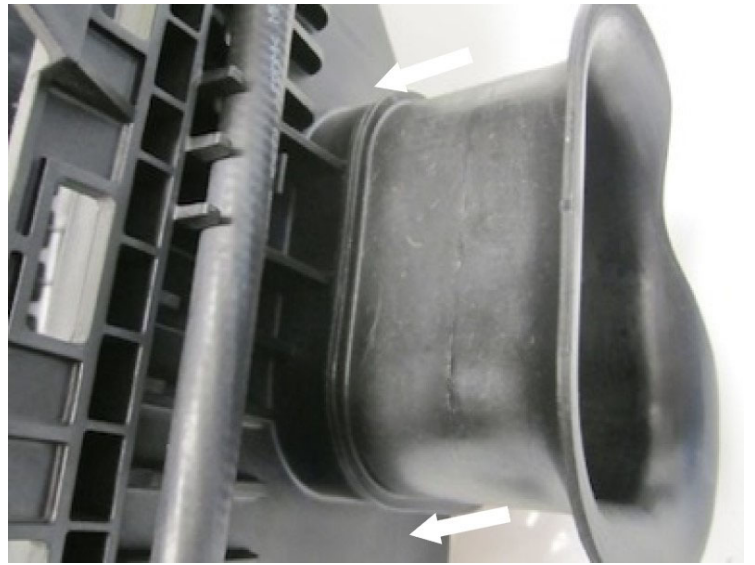
STEP 14

Remove the side inlet by pushing down on the tabs. A screwdriver may be required to loosen the two tabs on top and one tab underneath.



STEP 15

Install the Fender Inlet (W) into the factory intake box by pushing in firmly until it snaps into place.



STEP 16

With the Fender Inlet (W) installed. Lower the factory intake box back down and reinstall the factory bolts. Make sure the fender inlet is pushed through the side skirt.

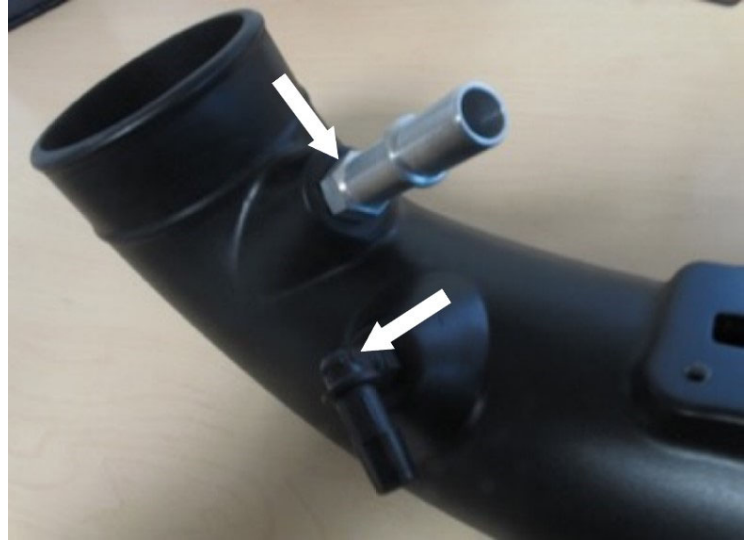


STEP 17

Install the Hose Fitting (M) and Hose Barb (T) into the Intake Tube (H). Install until snug and do not overtighten.

For Hose Fitting (M), install until hand tight and then use a crescent wrench and tighten it another one to two complete turns.

IMPORTANT: Do not over tighten, as the Quick Connect Fittings can break or the threaded inserts may strip!



STEP 18

Install the MAF Gasket (N) then the MAF Plate (O) and tighten down using the 10-32

Screws (P).

Note: The arrows need to point towards each other.



STEP 19

Install the MAF sensor using the 8-32 Screws (Q) and Rubber Washers (R) onto the MAF Plate (O).



STEP 20

Install the Coupler (K) and Hose Clamps #60 (L) onto the Intake Tube (H). Only tighten down the hose clamp on the tube side leaving the throttle body side loose for install.



STEP 21

Install the Rubber Cuff (C) and Hose Clamp #104 (D) onto the Intake Box Cover (B) making sure that the tab on the cuff aligns with the notch.



STEP 22

Insert the Intake Tube (H) into the Intake Box Cover (B) through the Rubber Cuff (C). Please make sure that the tube is pushed all the way to the stop bead.



STEP 23

Tighten Hose Clamp #104 (D) on the Rubber Cuff (C). The rubber cuff will allow some movement of the tube to accommodate engine

vibrations.



STEP 24

Install the Air Filter (I) onto the Intake Tube (H). Position the Hose Clamp #88 (J) so that it can be easily accessed through the lid opening. Tighten the hose clamp.



STEP 25

Install the whole intake assembly into the factory intake box. Make sure that the tabs on the Intake Box

Cover (B) are lined up with the slots on the factory intake box. Once the tabs are in the slots lower the whole intake assembly. Proper installation into the slots will reduce movement.

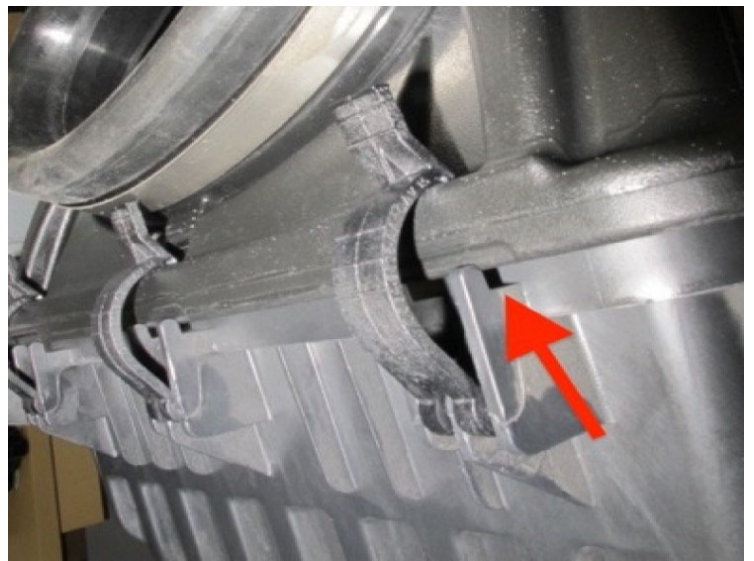


STEP 25 (IMAGE 2)



STEP 26

Fasten the three latches from the stock airbox.



STEP 27

Slide the Intake Tube (H) onto the throttle body and tighten Hose Clamp #60 (L)



STEP 28

Connect the hardline from the engine to the Hose Fitting (M) and Hose (U) onto the Hose Barb (T).



STEP 29

Connect the other end the Hose (U) onto the plastic barb.



STEP 30

Connect the other end the Hose (U) onto the plastic barb.



STEP 31

Connect the Extension Harness (V) to the factory MAF sensor. Position the harness away from any moving or vibrating engine components.



STEP 32

Remove the protective covering from the Clear Lid (E). Fasten the clear lid onto the Intake Box Cover (B) using 1/4-20 Screws (F) and Washers (G).



STEP 33

Reconnect the negative terminal on the battery. Inspect your installation, make sure the kit is properly positioned and all fasteners are secure. Affix the CARB and ID label near the intake kit. Keep all stock parts in case you would ever need to reinstall the stock intake. The installation is now complete.



STEP 34

Note: The optional Pipe Plug (S) is provided for custom application purposes.