

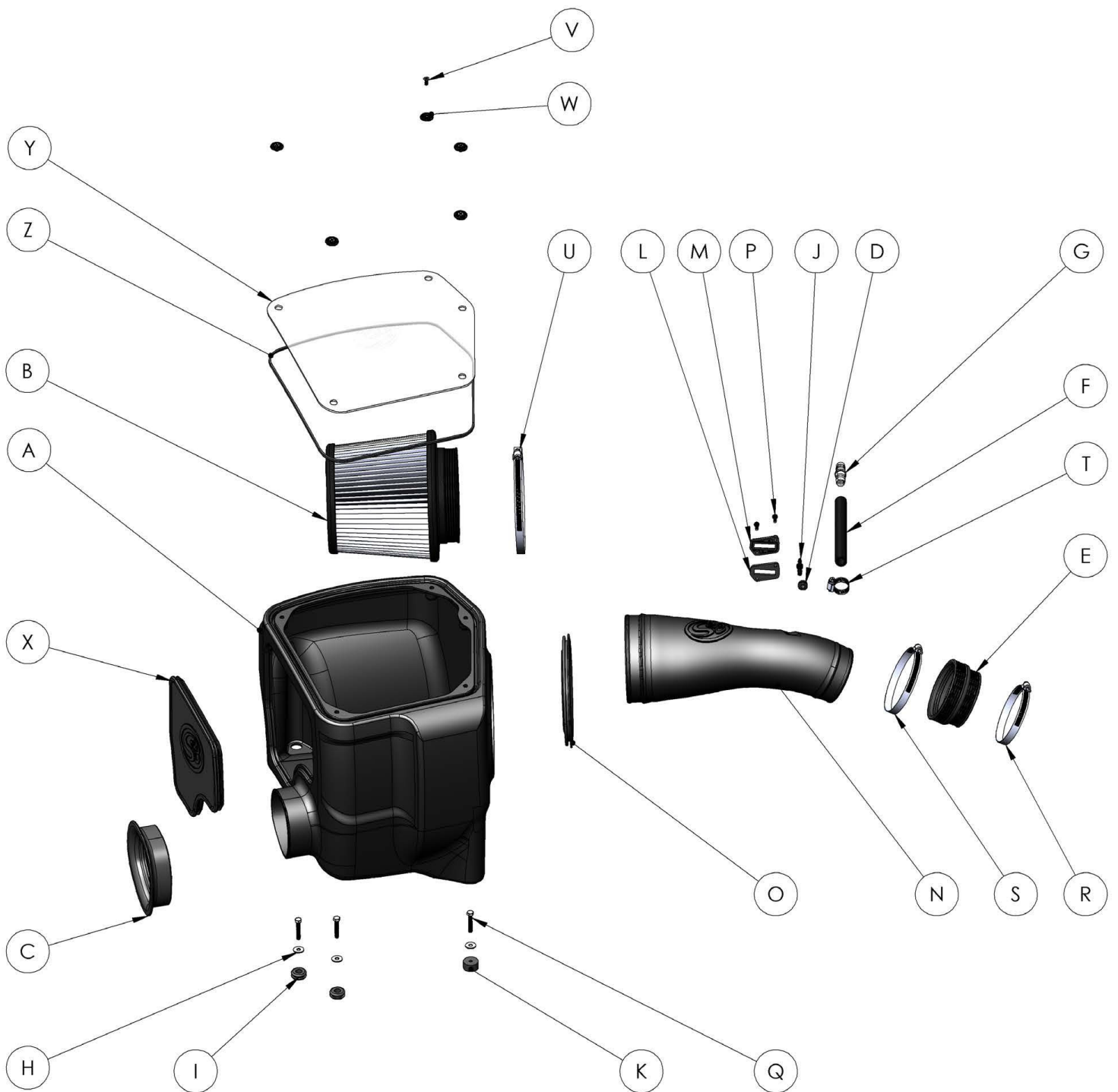
# INSTALL INSTRUCTIONS FOR 75-5039

## BEFORE YOU START

- Please read the entire product guide before proceeding.
- Ensure all parts are present.
- If you are missing any of the components, call our customer support at (909) 947-0015.
- Do not work on your vehicle while the engine is hot.
- Make sure the engine is turned off and the vehicle is in Park or the Parking Brake is set
- Note: This intake kit may not fit with the following Aftermarket Parts installed: Body Lift or Lowering Kit, Custom Hood, Throttle Body Upgrade

## REQUIRED TOOLS

- 8mm, 10 mm socket wrench
- Phillips Screwdriver



ITEM	QTY	DESCRIPTION	PART NUMBER
A	1	AIRBOX	AL1326B-00
B	1	SILICONE FILTER	KF-1056
C	1	FENDER SEAL	AI1580C-00
D	1	TUBE GROMMET	AI1593-00
E	1	SILICONE COUPLER	AI1581C-00
F	1	SILICONE HOSE	AI1038-01
G	1	HOSE ADAPTER	AI1110-00
H	3	WASHER, FLAT, M6	AI1535-00
I	2	BOX GROMMET	AI1563-00

HARDWARE PACKS
HP1541-00
AG1019-00
AG1018-00
AI1038-01
HP1407-00
AI1837-00
AI1822-00
AI1823-00
HP1543-00
AI1110-00
AG1013-00
AI1593-00
AI1594-00
HP1544-00

J	1	SMALL HOSE ADAPTER	AI1594-00
K	1	BOX MOUNT SPACER	AI2051-00
L	1	MAF GASKET	AI1823-00
M	1	MAF PLATE	AI1822-00
N	1	AIR TUBE	AL1326-00
O	1	TUBE SEAL	AI1972C-00
P	2	MAF PLATE SCREW (8-32 X 3/4")	AI1837-00
Q	3	BOLT, HEX, M6X30	AI1257-00
R	1	#56 HOSECLAMP	AG1019-00
S	1	#64 HOSECLAMP	AI1018-00
T	1	#6 HOSECLAMP	AG1013-00
U	1	#88 HOSECLAMP	AG1011-00
V	5	LID SCREW	AI2005-00
W	5	LID WASHER	AI2006-00
X	1	BOX PLUG	AI2052C-00
Y	1	CLEAR LID	AI2054-00
Z	1	LID SEAL	AI1766-05
ITEMS NOT SHOWN IN THE EXPLODED VIEW			
AA	1	THREAD LOCKER	AI1595-00

AI2051-00  
AI1563-00  
AI1257-00  
AI1535-00  
AI1595-00  
LHP0006-00  
AI2005-00  
AI2006-00  
HP1542-00  
AI2054-00  
AI1766-05

AM0371-00 REV-E 08/16/2018

# THREAD LOCKER USE

We have provided a small tube of thread locker in your kit. Whenever you see the symbol above on a step of the instructions apply 1 small drop of the thread locker to the threads of the screws or bolts. This will keep your hardware from vibrating loose during rough driving. If the hardware ever needs to be removed, do so slowly to avoid having the inserts strip out from the plastic.

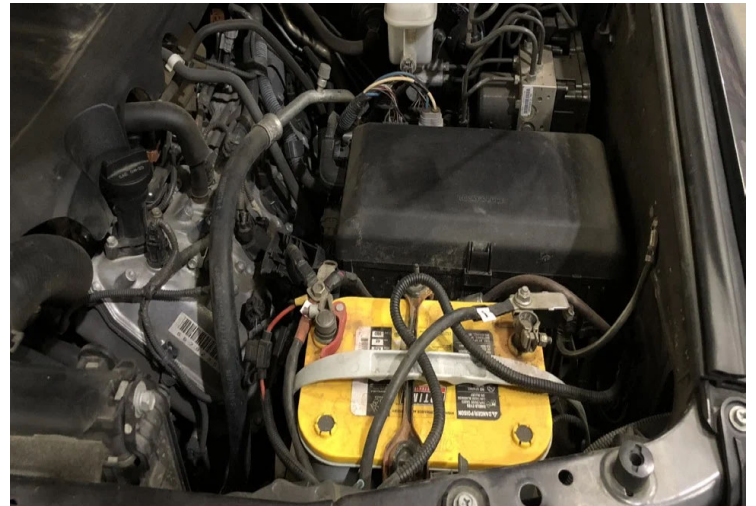


## STEP 1

With the ignition switched off and the parking brake set, disconnect the negative battery cable on the passenger side then remove the engine cover.

**IMPORTANT:** Failure to disconnect the battery for a minimum of 2 hours may cause the Check Engine Light to illuminate upon completion of the installation or subsequent operation.

**DO NOT SKIP THIS STEP!**



## STEP 2

Disconnect the MAF sensor and vacuum lines from the stock intake tube.





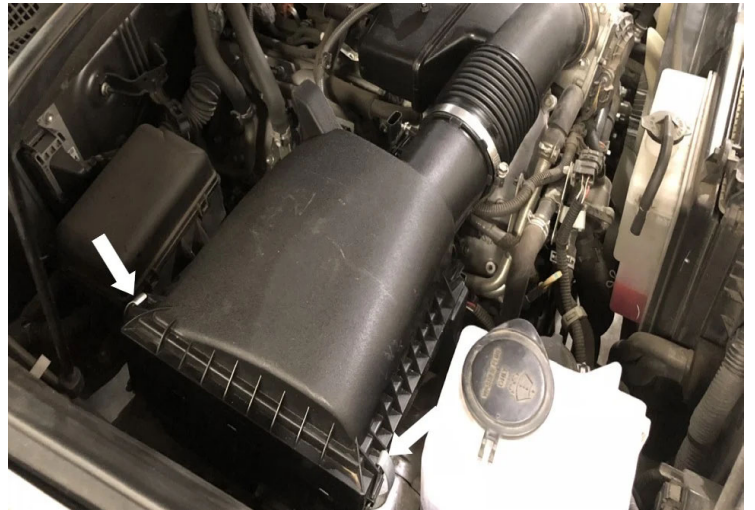
## STEP 3

Loosen the hose clamp on the intake tube at the throttle body.



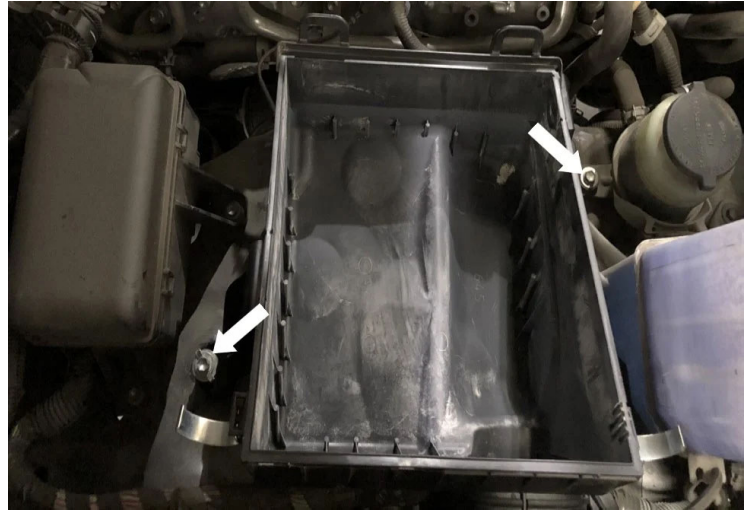
## STEP 4

Un-latch clips on the airbox and remove intake tube assembly and stock air filter from the vehicle.



## STEP 5

Loosen the two bolts securing the airbox and remove airbox from the vehicle.



## STEP 6

Remove MAF sensor from the stock intake tube



## STEP 7

Install MAF Sensor, Plate (M), and Gasket (L) onto Intake Tube (N) with provided Hardware (P).



## STEP 8

Install Grommet (D) and Hose Adapter (J) into Intake Tube (N). The large side of the adapter goes into the intake tube grommet.



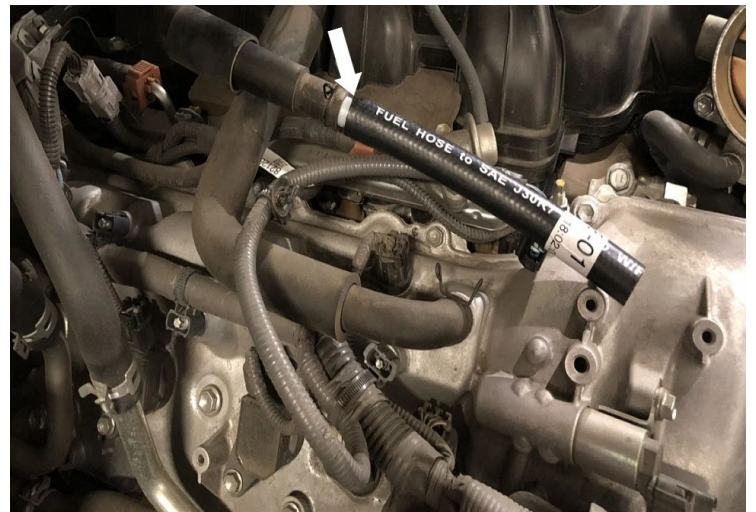
## STEP 9

Install Hose Adapter (G) into Hose (F).



## STEP 10

Install the assembled Hose (F) into the stock vacuum hose.





## STEP 11

Install Grommets (I) into two holes on the bottom of Airbox (A).



## STEP 12

Install M6 Bolt (Q), Washer (H), and Spacer (K) into the remaining hole in the bottom of the Airbox (A) then apply Thread Locker (AA) to the threads on the bolt.



## STEP 13

Install Tube Seal (O) onto  
Airbox (A).



## STEP 14

Install Fender Seal (C) onto  
Airbox (A).



## STEP 15

(Optional): Determine if you want to install the Box Plug (X) onto the Airbox (A). See the “Intake Box Plug” to decide the desired setup. Leave Box Plug uninstalled for maximum airflow.



## STEP 16

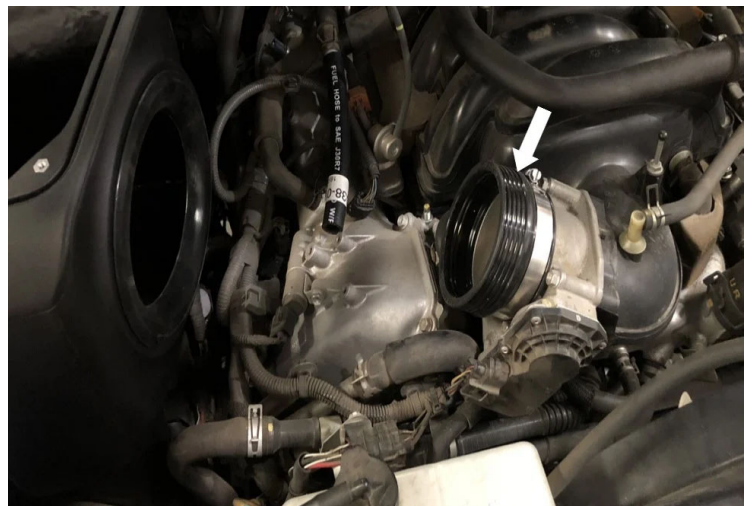
Install Airbox (A) into the vehicle. Apply Threadlocker (AA) to the threads on the remaining two M6 Bolts (Q). Tighten the bolts with Washers (H).

**Note:** Do not fully tighten the bolt. The washer will begin to pull through the grommet if overtighten. Applying the threadlocker will prevent the bolts from backing out.



## STEP 17

Install Coupler (E) onto the throttle body using Hoseclamp (R). Tighten the Hose clamp.





## STEP 18

Install Intake Tube (N) by first feeding the intake tube from inside of the airbox to the throttle body and tighten Hose Clamp (S).



## STEP 18 (IMAGE 2)

...continued



## STEP 19

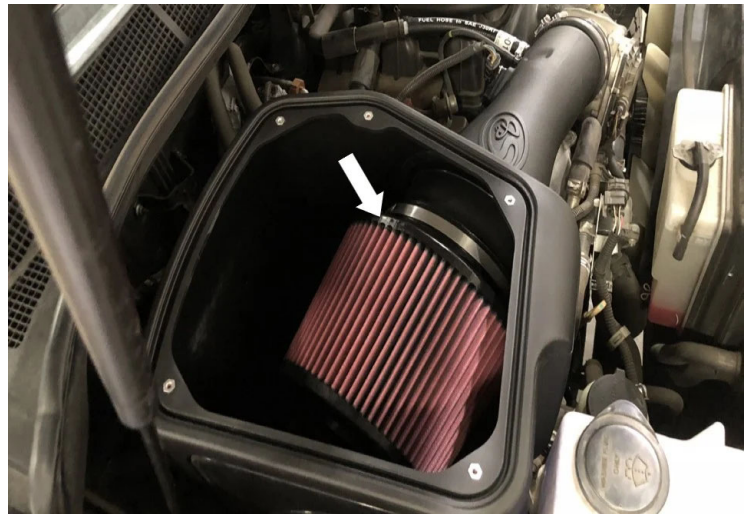
Secure vacuum hoses onto Intake Tube (N) and tighten Hosclamp (T) for Hose (F) and pushing the smaller hose onto Hose Adapter (J). Ensure Adapter (J) is properly seated in Tube Grommet (D). Reconnect MAF sensor harness to the

MAF sensor.



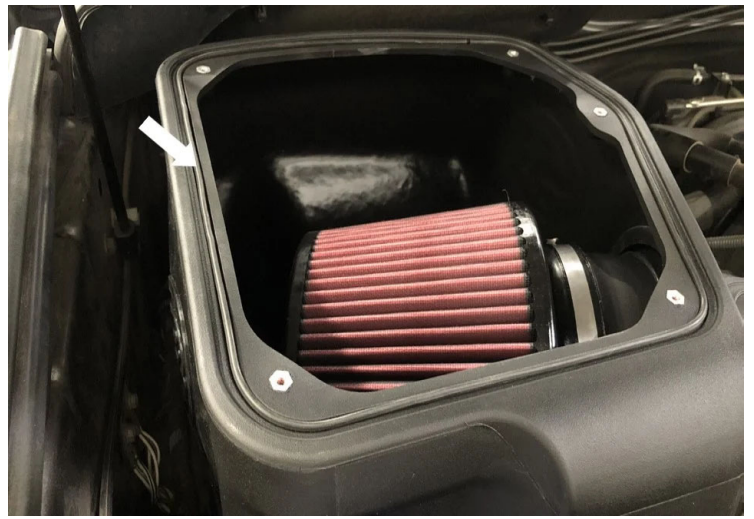
## STEP 20

Install Filter (B) onto Intake Tube (N) and tighten the Hoseclamp (U).



## STEP 21

Install Lid Seal (Z) into Airbox (A).



## STEP 22

Remove all protective films from Clear Lid (Y).



## STEP 23

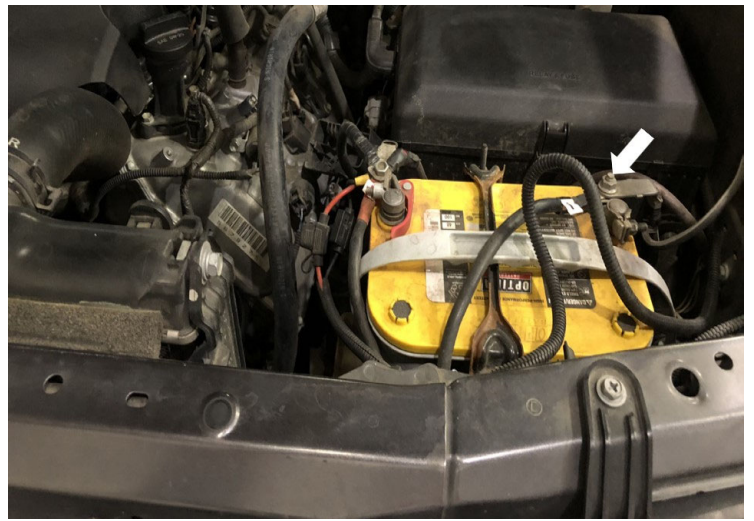
Install Clear Lid (Y) with Lid Washers (W) and Lid Screws (V).





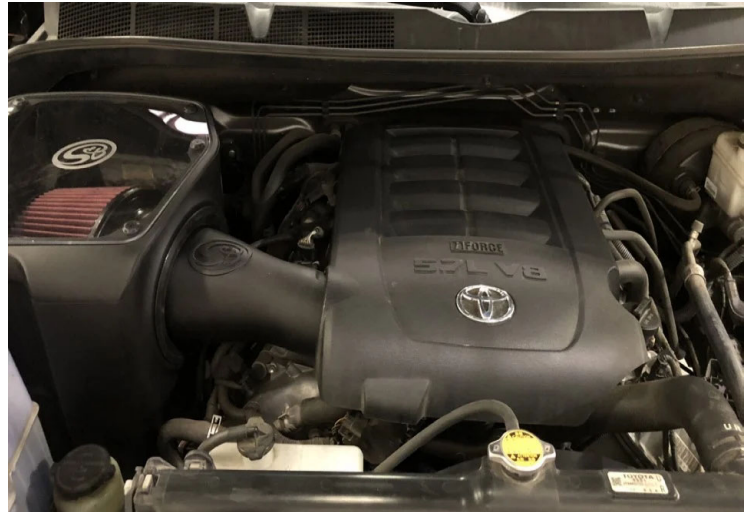
## STEP 24

Reconnect negative battery terminal.



## STEP 25

Reinstall the stock engine cover.





## STEP 26

Inspect your installation, make sure the kit is properly positioned and all fasteners are secure. Keep all stock parts in case you would ever need to reinstall the stock intake assembly. Affix the ID label near the intake kit. The installation is now complete.

