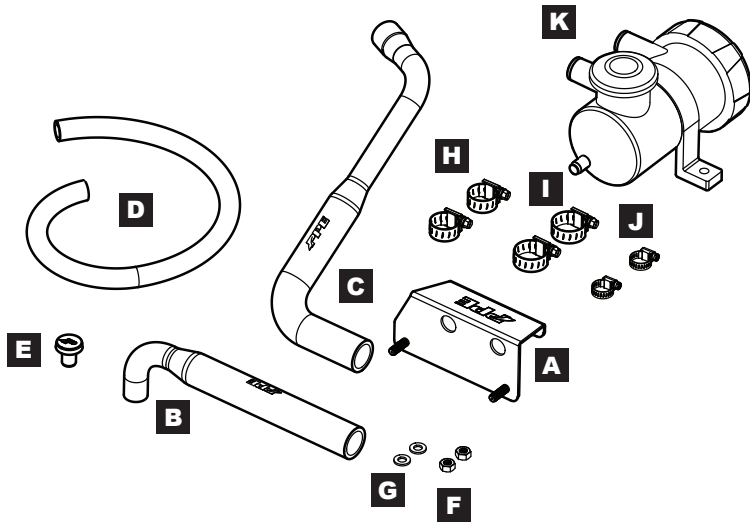


Crankcase Ventilation Oil/Water Separation Kit

*2020-2023 RAM 1500
3.0L EcoDiesel
(214023000)*

Installation Guide

Crankcase Ventilation Oil/Water Separation Kit



CONTENTS:

- A** (1) Mounting Bracket
- B** (1) Inlet Hose
- C** (1) Outlet Hose
- D** (1) 0.5" Drain Hose
- E** (1) Drain Plug
- F** (2) M8 Nut
- G** (2) Flat Washer
- H** (2) Worm-Drive-Clamps 14-27mm
- I** (2) Worm-Drive-Clamps 18-32mm
- J** (2) Worm-Drive-Clamps 11-20mm
- K** (1) Oil Separator with Steel Screen

INSTALLATION:

1. Remove the engine cover by loosening the two bolts securing it (10mm socket). **(Fig.1)**



2. With a screwdriver or a pick, loosen the clamp securing the factory CCV hose turbo end, located near the turbocharger close to the firewall. Then disconnect this end of the hose from the factory plastic connector. To loosen the clamp, insert the tip of the tool through the metal band loop and expand the loop. **(Fig.2)**



3. On the valve cover end of the factory CCV hose, pinch the plastic connector and pull it away from the ventilation tube. **(Fig.3)**



4. The CCV hose should be loose now and can be removed.

Crankcase Ventilation Oil/Water Separation Kit

5. Remove the plastic connector from step 3 the same way as explained in step 2. Transfer this connector to the small/short end of PPE Hose (B), secure with clamp (H). **(Fig.4)**



6. Connect drain hose (D) to the PPE Oil Separator (K) bottom drainage outlet, secure with clamp (J)

7. Mount Separator to Mounting Bracket (A). Slide the filter through the two fixed studs, secure with the supplied Washers (G) and Nuts (F). Torque nuts to 120 lb-in.

8. With an 8mm socket, remove the two bolts securing the engine computer right next to the battery on the driver side. Mount the PPE mounting bracket right next to the engine computer, secure with the factory bolts. Torque to 90 lb-in. **(Fig.5)**



9. Connect the supplied PPE CCV Hoses. Hose (B) goes from valve cover end to Filter upper inlet, hose (C) goes from Filter lower outlet to turbo end. Use clamps (I) on the filter, use clamp (H) on the turbo end. Tighten all clamps to 80 lb-in. **(Fig.6)**



10. Run the half inch hose (D) from step 6 through the fender well up against the frame rail. Use a cable tie to secure it to the predrilled hole on the frame. **(Fig.7).**



11. Insert the supplied Plug (E) to the lower end of the half inch hose. Secure with clamp (J)
12. Screw the filter cap open and make sure the filter element is firmly seated in the housing. Screw cap back onto the filter.

The installation is complete.

Service recommendation: Drain catch can every 5,000 miles by removing the drain plug. Clean the catch can screen filter as needed. To clean, remove it from catch can, submerge in mild degreaser (like brake cleaner) or hot soapy water, scrub, rinse, and dry thoroughly.

DISCLAIMER OF LIABILITY

Performance products can increase horsepower above and beyond factory specifications. Additional horsepower creates more stress on the drive-train components, which could result in drive-train failure.

Note regarding emissions-related, non-E.O.-legal products: THESE PRODUCTS ARE LEGAL IN CALIFORNIA ONLY FOR RACING VEHICLES THAT MAY NEVER BE USED, OR REGISTERED OR LICENSED FOR HIGHWAY OR OFF-ROAD USE.

This agreement sets forth the terms and conditions for the use of PPE products. The installation of this product indicates that the Buyer has read and understands this agreement and accepts the terms and conditions. PPE (Pacific Performance Engineering) Inc., its distributors, employees, and dealers (the "Seller") shall not be responsible for the product's proper use and service. The buyer hereby waives all liability claims. The Buyer hereby acknowledges no reliance on the Seller's skill or judgment to select or furnish goods suitable for any particular purpose and that there are no liabilities which extend beyond the description on the face hereof, and the Buyer hereby waives all remedies or liabilities expressed or implied, arising by law or otherwise (including without any obligation of the Seller with respect to fitness, merchantability and consequential damages), or whether or not occasioned by the Seller's negligence. The Seller disclaims any warranty and expressly disclaims any liability for personal injury or damages. The Buyer acknowledges and agrees that the disclaimer of any liability for personal injury is a material term for this agreement and the Buyer agrees to indemnify the Seller and to hold the Seller harmless from any claim related to the item of equipment purchased. Under no circumstances will the Seller be liable for any damages or expenses by reason of use or sale of any such equipment. The Seller assumes no liability regarding the improper installation or misapplication of its products. It is the installer's responsibility to check for proper installation and if in doubt, contact the manufacturer. The Buyer is solely responsible for all warranty issues from the manufacturer.

LIMITATION OF WARRANTY

The Seller gives Limited Warranty as to description, quality, merchantability, and fitness for a particular purpose, productiveness, or any other matter of Seller's product sold herewith. The Seller shall not be responsible for the products proper use and service and the Buyer hereby waives all rights other than those expressly written herein. This warranty shall not be extended, altered or varied except by a written instrument signed by Seller and Buyer.

Limited lifetime warranty on all PPE cast aluminum products, and PPE Transmission Coolers. Three (3) year limited warranty on PPE Manifolds and Up-Pipes Kits, and OEM-Length Up-Pipes. One (1) year limited warranty on all other PPE products from the date of sale to original buyer and limited solely to the parts contained within the products kit. All products that are in question of Warranty must be returned prepaid to the Seller and must be accompanied by a dated proof of purchase receipt. All Warranty claims are subject to approval by Seller. Under no circumstances will the Seller be liable for any labor charged or travel time incurred in diagnosis for defects, removal, or re-installation - of this product or any other contingent expenses. Under no circumstances will the Seller be liable for any damage or expenses incurred by reason of the use or sale of any such equipment. In the event that the buyer does not agree with this agreement: the buyer may promptly return this product, in a new and unused condition in its original packaging, with a dated proof of purchase to the place of purchase within ten (10) days from date of purchase for a full refund. The installation of this product indicates that the buyer has read and understands this agreement and accepts its terms and conditions.



PPEpower.com