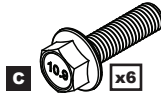
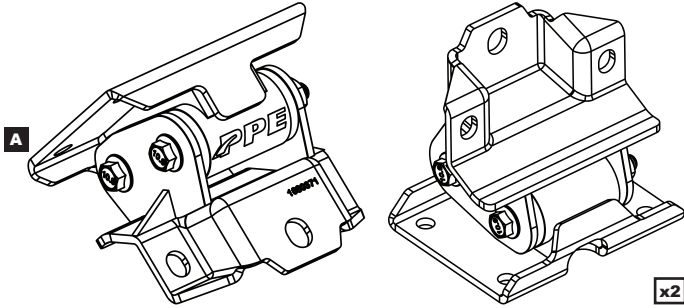


Engine Mount Kit with Silicone Bushings

**1999 – 2013 GM Pickup Trucks/SUV
5.3L 6.0L Gas**



CONTENT

A. Engine Mounts (2)

B. Steel Washer (2)

C. M10-1.5 X 35mmL Flange Bolt (6)

D. M10-1.5 X 20mmL Flange Bolt (8)

Recommended Tools:

- 14mm Socket
- 15mm Socket
- Ratchet Wrench
- Socket Extension
- Swivel Socket
- 14mm Wrench
- 15mm Wrench
- Torque Wrench
- Impact Wrench



**INSTALLATION
VIDEO**



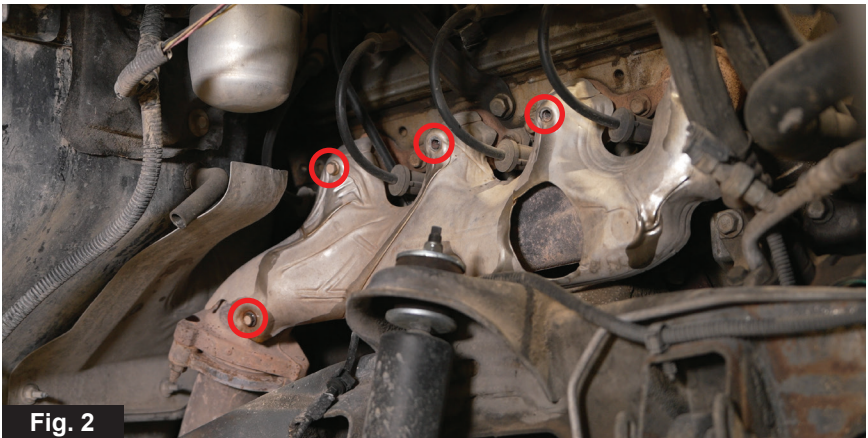
**PRODUCT
RESOURCES**

INSTALLATION

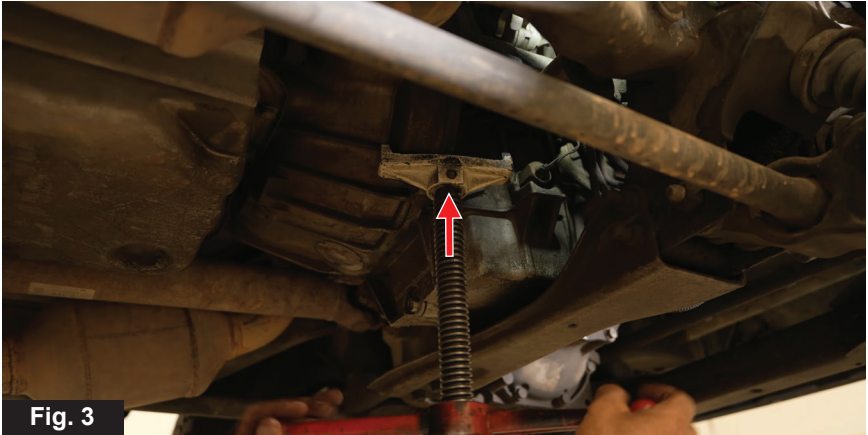
1. Engine off and cool. Remove both front wheels and fender liners. (Fig. 1)



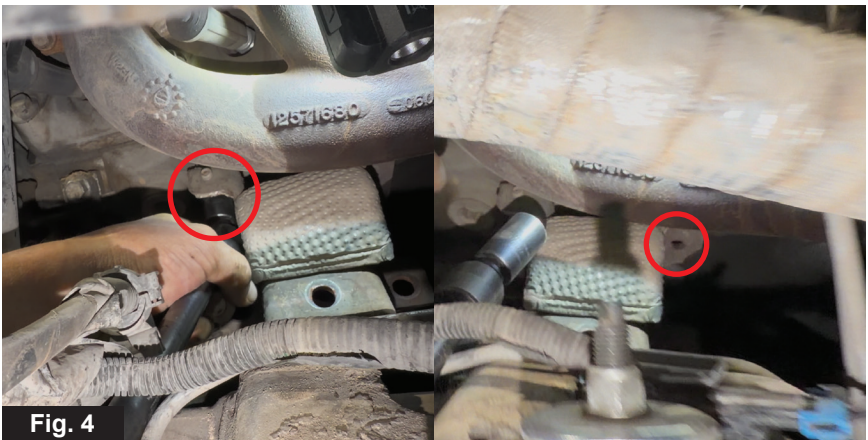
2. Remove the passenger side exhaust manifold heat shield. (Fig. 2)



3. Jack the transmission up on the passenger side of the bell housing. (Fig. 3)



4. Remove the bolts connecting the passenger side engine mount to the engine block. (Fig. 4)



5. Remove the bolts connecting the engine mount to the frame.
(Fig. 5)



6. Remove the engine mount by pulling it out from the front of the engine.
Raise or lower the jack as needed. (Fig. 6)



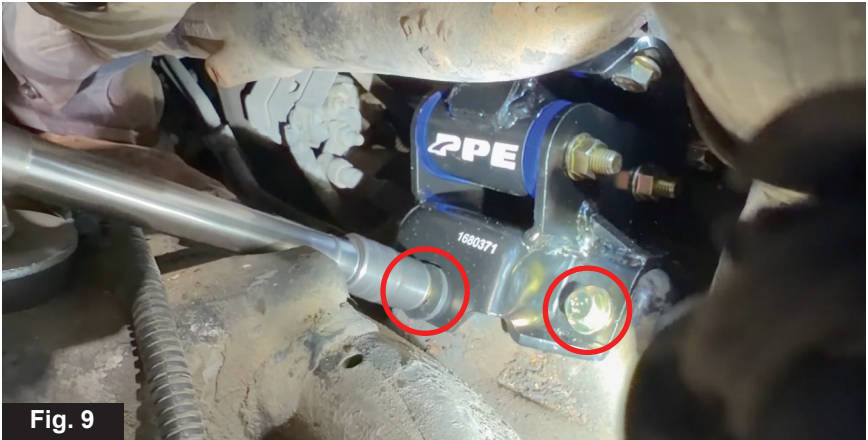
7. Prepare one of the PPE engine mounts (A) by tightening the through bolts to 40 lb-ft. **(Fig. 7)**



8. Insert the engine mount (A) in place. Install four of the provided 20mm-long bolts (D) to the engine block. **(Fig. 8)**



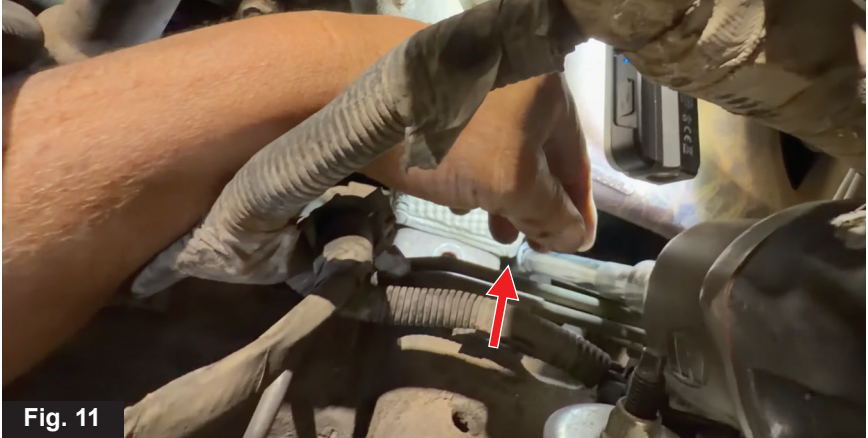
9. Lower the engine mount onto the frame, and install three of the provided 35mm-long bolts (C), install the steel washer (B) with the center bolt. **(Fig. 9)**



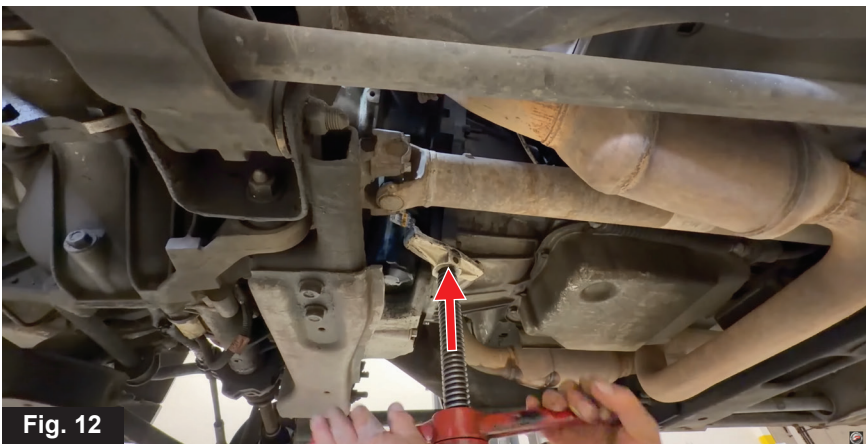
10. Moving on to the driver side, remove the exhaust manifold heat shield. **(Fig. 10)**



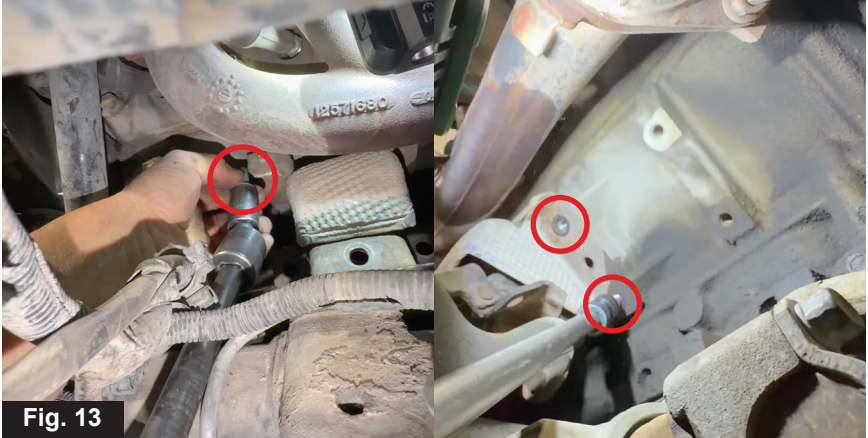
11. Remove the three frame-side bolts from the factory engine mount.
(Fig. 11)



12. Jack the transmission up on the driver side of the bell housing.
(Fig. 12)



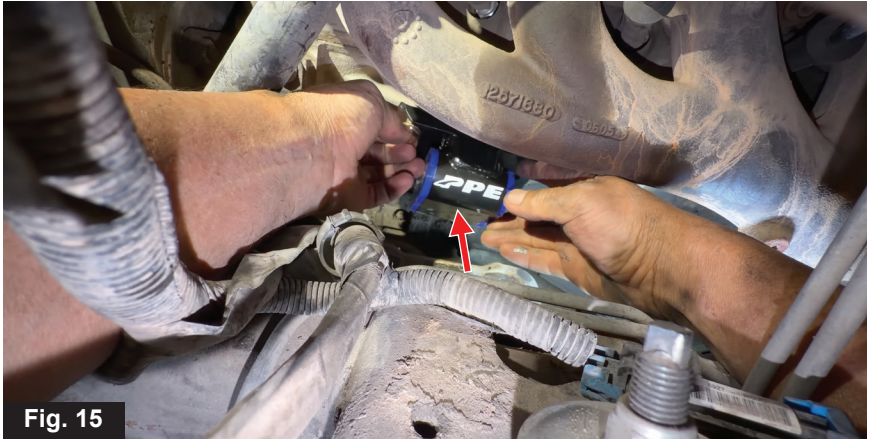
13. Remove the four engine-side bolts.
(Fig. 13)



14. Remove the driver-side engine mount, remove it from the rear of the engine. Before doing so, disconnect the front driveshaft to allow sufficient clearance for removal. (Fig. 14)



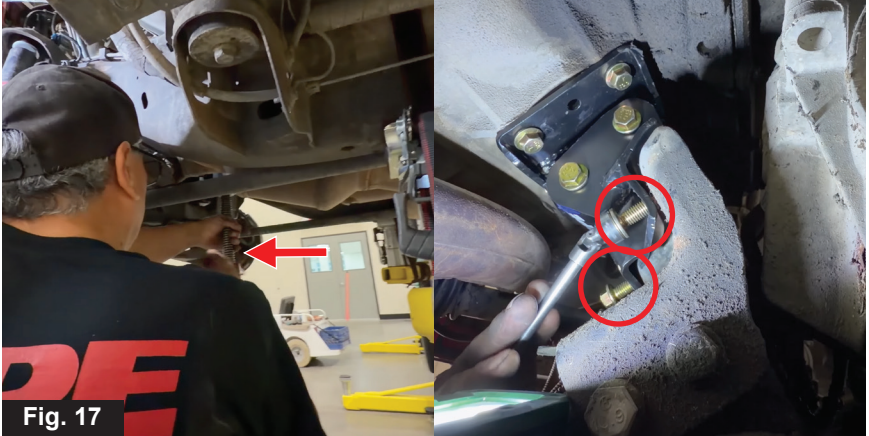
15. Install the upper half of the PPE engine mount (A) with four of the provided 20mm-long bolts (D). (Fig. 15)



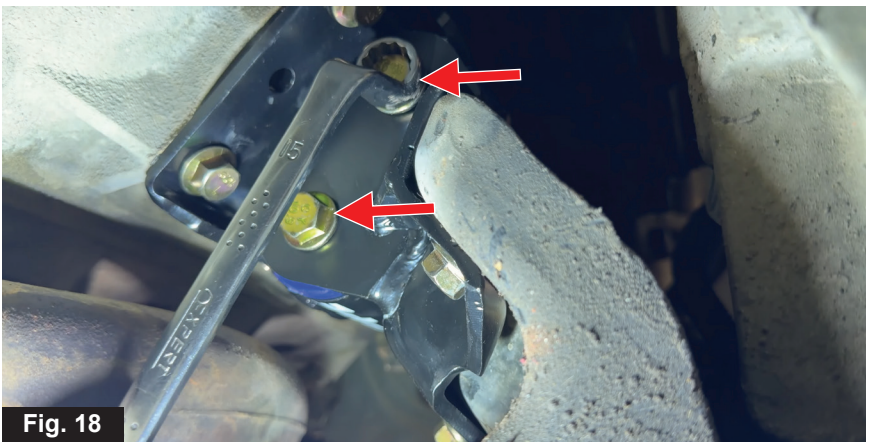
16. Install the lower half of the mount (A) to the upper half using two long bolts and two nuts. (Fig. 16)



17. Lower the jack and install the three provided 35mm-long bolts (C) frame side bolts. (Fig. 17)



18. Make sure the two halves of the engine mount are securely connected. (Fig. 18)



19. Reinstall the front driveshaft.
(Fig. 19)



20. Reinstall the exhaust manifold heat shields.
(Fig. 20)



21. Reinstall the fender liners and wheels.
(Fig. 21)



Installation Complete



Page intentionally left blank

DISCLAIMER OF LIABILITY

Performance products can increase horsepower above and beyond factory specifications. Additional horsepower creates more stress on the drive-train components, which could result in drive-train failure.

Note regarding emissions-related, non-E.O.-legal products: THESE PRODUCTS ARE LEGAL IN CALIFORNIA ONLY FOR RACING VEHICLES THAT MAY NEVER BE USED, OR REGISTERED OR LICENSED FOR HIGHWAY OR OFF-ROAD USE.

This agreement sets forth the terms and conditions for the use of PPE products. The installation of this product indicates that the Buyer has read and understands this agreement and accepts the terms and conditions. PPE (Pacific Performance Engineering) Inc., its distributors, employees, and dealers (the "Seller") shall not be responsible for the product's proper use and service. The buyer hereby waives all liability claims. The Buyer hereby acknowledges no reliance on the Seller's skill or judgment to select or furnish goods suitable for any particular purpose and that there are no liabilities which extend beyond the description on the face hereof, and the Buyer hereby waives all remedies or liabilities expressed or implied, arising by law or otherwise (including without any obligation of the Seller with respect to fitness, merchantability and consequential damages), or whether or not occasioned by the Seller's negligence. The Seller disclaims any warranty and expressly disclaims any liability for personal injury or damages. The Buyer acknowledges and agrees that the disclaimer of any liability for personal injury is a material term for this agreement and the Buyer agrees to indemnify the Seller and to hold the Seller harmless from any claim related to the item of equipment purchased. Under no circumstances will the Seller be liable for any damages or expenses by reason of use or sale of any such equipment. The Seller assumes no liability regarding the improper installation or misapplication of its products. It is the installer's responsibility to check for proper installation and if in doubt, contact the manufacturer. The Buyer is solely responsible for all warranty issues from the manufacturer.

LIMITATION OF WARRANTY

The Seller gives Limited Warranty as to description, quality, merchantability, and fitness for a particular purpose, productiveness, or any other matter of Seller's product sold herewith. The Seller shall not be responsible for the products proper use and service and the Buyer hereby waives all rights other than those expressly written herein. This warranty shall not be extended, altered or varied except by a written instrument signed by Seller and Buyer. The Warranty on PPE Manifolds and Up-Pipes Kits, OEM-Length Up-Pipes is three (3) years, a limited lifetime warranty on PPE cast aluminum pans and covers, and a limited lifetime warranty on PPE Transmission Coolers and one (1) year limited warranty on all other PPE products from the date of sale to original buyer and limited solely to the parts contained within the products kit. All products that are in question of Warranty must be returned prepaid to the Seller and must be accompanied by a dated proof of purchase receipt. All Warranty claims are subject to approval by Seller. Under no circumstances will the Seller be liable for any labor charged or travel time incurred in diagnosis for defects, removal, or re-installation - of this product or any other contingent expenses. Under no circumstances will the Seller be liable for any damage or expenses incurred by reason of the use or sale of any such equipment. In the event that the buyer does not agree with this agreement: the buyer may promptly return this product, in a new and unused condition in its original packaging, with a dated proof of purchase to the place of purchase within ten (10) days from date of purchase for a full refund. The installation of this product indicates that the buyer has read and understands this agreement and accepts its terms and conditions.

⚠ CA WARNING: Handling passenger or off-highway motor vehicle parts can expose you to chemicals such as phalates and lead, which can cause cancer and reproductive harm. To minimize exposure, service the vehicle in a well-ventilated area, wear gloves, and wash your hands. For more information see www.P65Warnings.ca.gov/motor-vehicle-parts.



PACIFIC PERFORMANCE ENGINEERING



550976