



WWW.MERCHANT-AUTOMOTIVE.COM

10458 LLY DURAMAX HIGH IDLE KIT

Full manual control of the elevated idle on your Duramax truck is possible with our High Idle Kit.

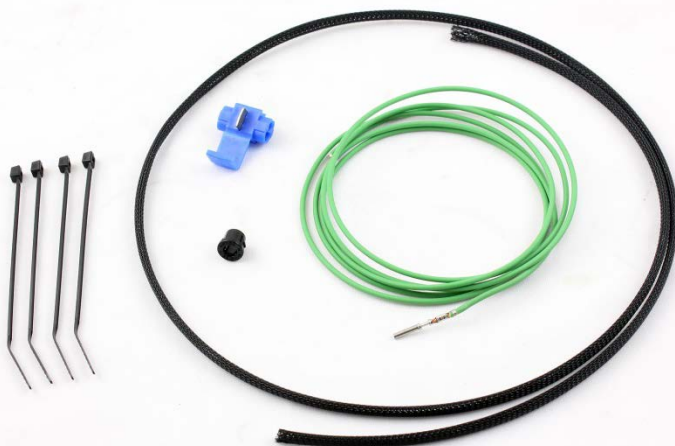
Operation is simple using only your cruise switch, no extra switches to mount or hide in your truck and features fool proof operation.

Get faster warm ups, increased output from your charging system and reduced wear on your engine during situations that require idling for extended periods of time.

For a step by step video of the installation visit our website:

http://merchant-automotive.com/t-product_spotlight.aspx

Or Scan this QR Code:



(Steps 1-3 are optional, can leave in place, but access is restricted)

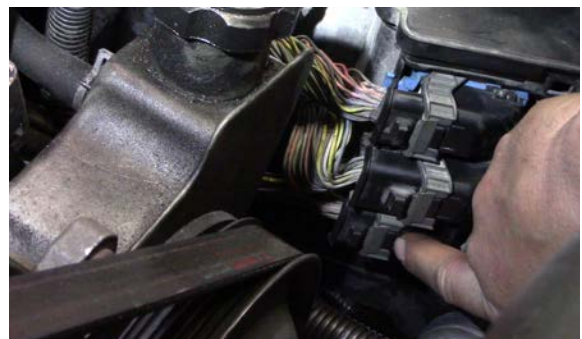
1. Remove the two bolts holding the TCM cover on and lift the cover.



2. Release the tabs holding the TCM into the cover. Set cover aside.



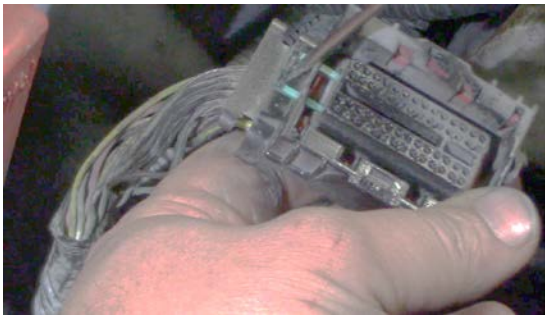
3. Unplug the two connectors from the TCM set the TCM aside.



4. Locate the lower connector as mounted on the ECM. The is the C3 Connector. It has a grey body. To release the connector, push in on the center tab and pull on the grey lever.



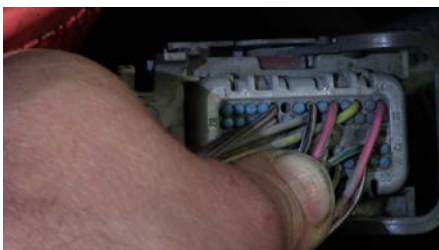
5. Remove the cover over the top of the connector exposing the wires and cut the zip tie holding the wires to the connector body



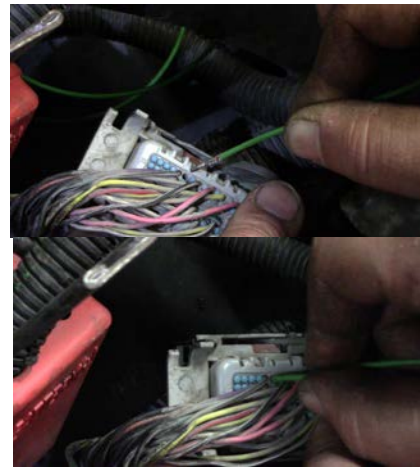
6. Remove the terminal retainer from the connector body by using a small screwdriver to remove it and slide it out



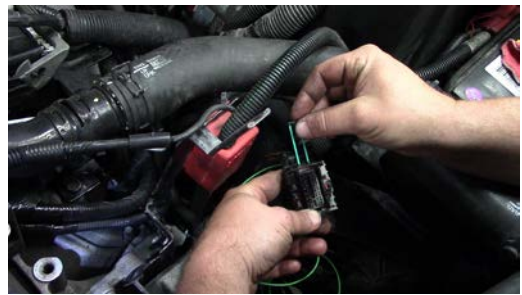
7. Locate the pin location ID numbers in the housing and locate the number 6 location. It is identified with a dot of paint for reference in the picture.



8. There is a cavity plug installed in the connector body that must be removed. It simply pulls straight out. Use a small pair of pliers or screwdriver to pop it up and pull it out. This will expose the hole that the wire will be installed into



9. Install the prepared wire with terminal into location 6 and push in until you hear an audible click. Gently tug on the wire to ensure it is locked in place and fully seated



10. Reinstall the terminal retainer into the connector body



11. Use the supplied zip tie to group the wires back together.



12. Reinstall the plastic cover on the connector and hook the connector back up to the ECM.



13. Reinstall the TCM if it was removed in step 1-3



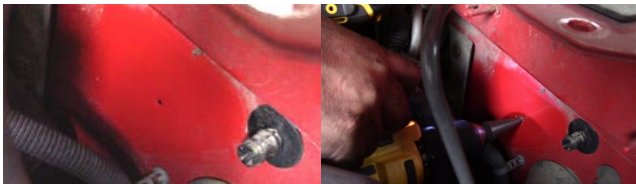
14. Up at the fire wall remove the fender brace.



15. Remove the wire connector nut, wire connector, and the loom bracket.



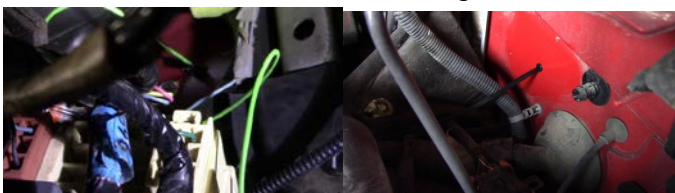
16. Remove the clip and pull back the fire wall insulation.



17. Locate the dimple in the fire wall. Drill a hole at the dimple to fit the supplied grommet. Deburr hole. Install grommet.



18. From inside the truck on the fire wall, locate the removable tab. Remove the tab and the insulation behind it. This will reveal the drilled hole/grommet.



19. Run the wire from the ECM through the supplied loom and pass it through the grommet.



20. Locate and unplug the connector on the brake switch. It is directly above the top of the brake pedal.



21. Locate the terminal with a letter F. It is on the end. Using the supplied Scotch Lock connector and a pair of pliers, attach the High Idle wire to the brake switch wire. You may also choose to solder the wire for best results

22. Reinstall the brake switch connector.

23. Tidy up the loose wires with zip ties.

24. Reinstall all the insulation and connectors under the hood of the truck.

Activation is Simple:

To set the high idle:

Start the truck then press the **set button** on the cruise control making sure your foot is not on the brake. This will raise the idle to about 1200 rpm.

Pressing the **resume button** on the cruise control will raise the idle to about 1800 rpm.

You can switch between idle rpm by pressing the opposite button. **Ex.** Press the **resume button** to reach 1800 rpm then press the **set button** to drop to 1200 rpm.

To disable the high idle: Press the button again or tap the brake pedal. Once the truck is put in gear the high idle is disabled.

FAQ:

It may take two times for initialize time after the install.