



Thank you for purchasing a Sinister Manufacturing Company 94-09 Dodge 2500/3500 Leveling Kit.  
Precision manufactured using high quality aluminum

These installation instructions have been written to help you in the installation of your  
Sinister 94-09 2500/3500 Dodge Leveling Kit. Please read it completely before installing your kit.

This Kit has been designed for:  
1994-2009 Dodge 2500/3500

This kit may void factory warranty please check with manufacturer.

Sinister Manufacturing Company recommends that a professional aftermarket parts installer, who has all the necessary equipment, tools and experienced personnel needed for proper installation, should perform the installation of this system. However, if you decide to perform the installation, it will be at your own risk.

Please take time to read and understand the following...

By installing your Sinister 94-09 Dodge 2500/3500 Leveling Kit, you indicate that you have read this document and you agree with the terms stated below. It is the responsibility of the purchaser to follow all installation instruction guidelines and safety procedures supplied with your Sinister 94-09 Dodge 2500/3500 Leveling Kit.

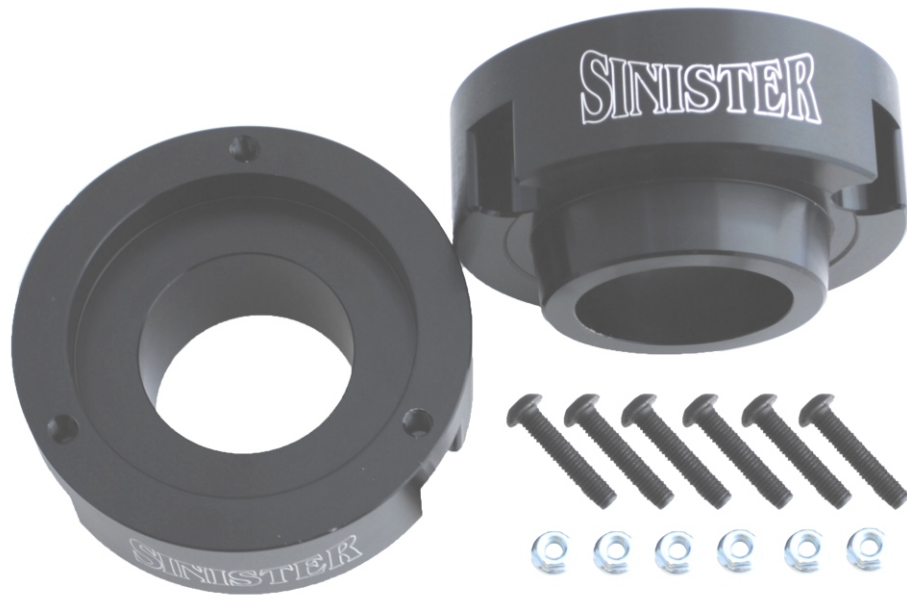
Sinister Manufacturing Company assumes no responsibility for damages occurring from misuse, abuse, improper installation, improper operation, lack of responsible care, or all previously stated reasons resulting from incompatibility with other manufacturer's products and/or systems.

If you should have any questions regarding our warranty policy, installation, or any other matter pertaining to your new Sinister Leveling Kit, please give us a call at the number provided.

Please call us toll free at 877-692-4110 Mon-Fri 8am-5pm  
if you need any additional assistance.

Copyright©2010 Sinister Mfg. Company  
2025 Opportunity Drive Ste 7, Roseville, CA 95678

## 94-09 Dodge 2500/3500 Leveling Kit



### PACKING LIST:

QTY.	DESCRIPTION
2	Sinister Leveling Blocks
6	M10 Cap Head Bolts
6	M10 Flange Nuts

Note: Before removing the original parts from your vehicle, please compare the parts you have received with the bill of materials provided on this page to assure that you have all the parts necessary for the installation of your new Sinister Leveling Kit.



**Caution!!! Never work on a hot Vehicle. Serious injury in the form of burns can result if the vehicle has been in use and the coolant system is hot, allow vehicle to cool for at least 1 hour. Always wear eye protection when working under any vehicle.**

Step 1: Lift the front of the truck by the axle and put jack stands under the frame just in front of the transmission cross member.

Step 2: Remove the front wheels from the truck.

Step 3: Making sure that there is a little upward pressure on the shocks, remove the upper shock bolt. Let the pressure off of the shocks and remove the three nuts that hold the shock tower in place.

Step 4: Remove the lower shock bolt and pull the shock out through the top. Do this for both sides.



Figure A



Figure B



Figure C



Figure D

Step 5: Remove the sway bar nuts on both sides and pull the sway bar out of the way.

Step 6: Remove the upper panhard bar bolt and allow the panhard bar set on top of the axle.

Step 7: Lower the axle down until there is enough room to fit the leveling block between the top of the coil and the upper coil bucket.

Step 8: With the spacers in place lift the axle up, being sure that the studs are lined up with the holes. Apply enough upward pressure to hold the leveling blocks in place while re-installing the shocks and shock towers.



Figure E

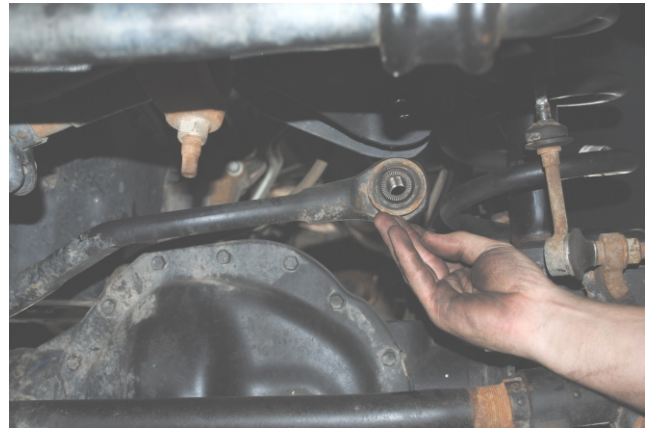


Figure F



Figure G



Figure H

Step 9: Drop the shocks back in from the top and re-install the shock towers with the new hardware

Step 10: Re-install the sway bar and the panhard bar.

Step 11: Put the front wheels back on the truck. Lift the truck off the jack stands and set it back on the ground.

Step 12: Go back through all of the components making sure that they are all tight and secure. It is highly recommended that the truck be aligned after installing the Sinister Leveling kit.