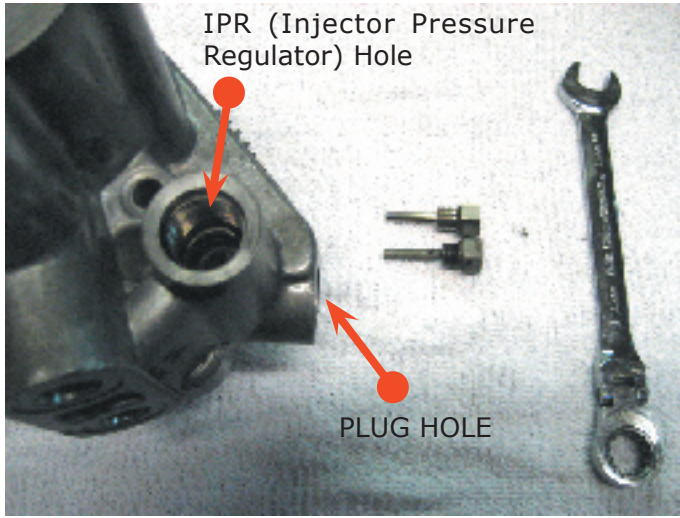


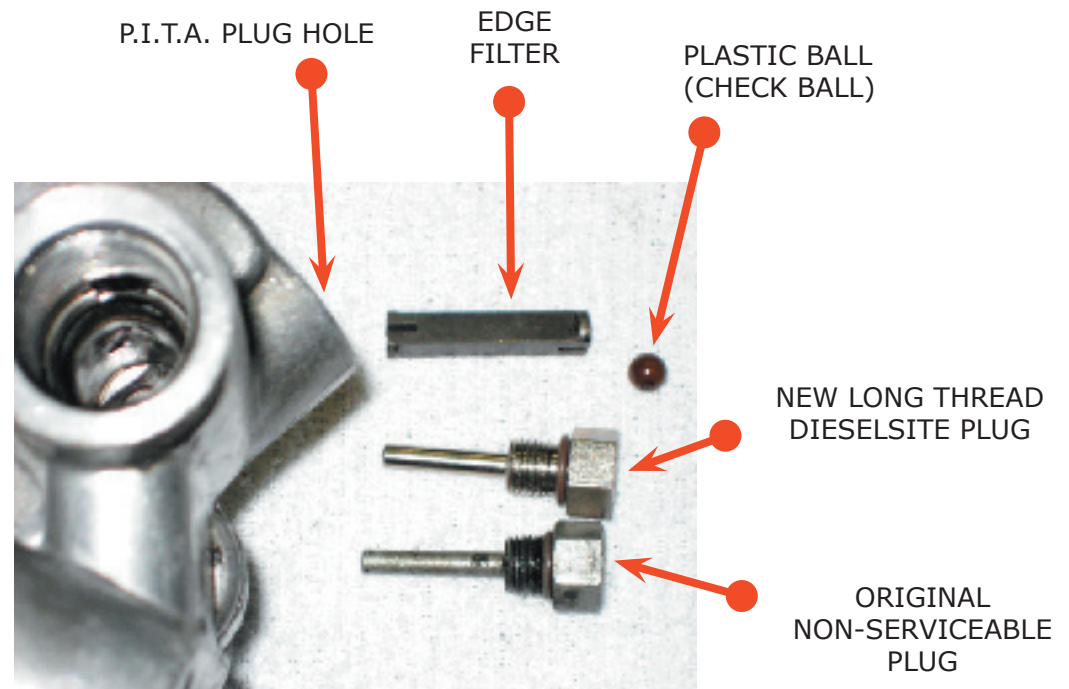
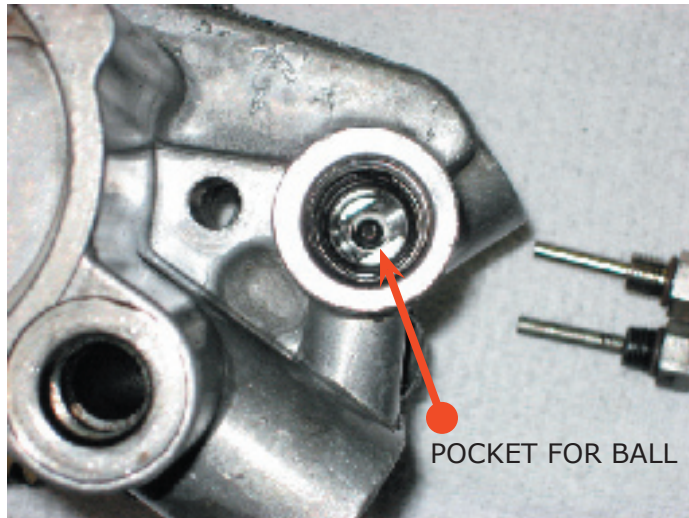
Replacement P.I.T.A. Plug (“non-serviceable” HPOP Plug) Installation Instructions

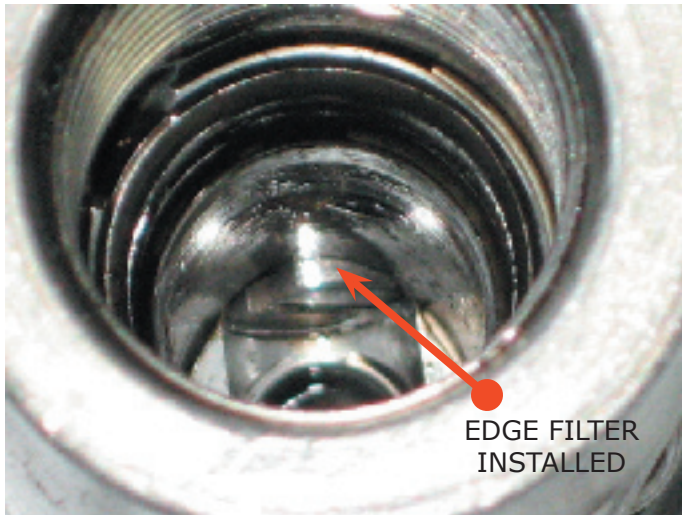


DO NOT ATTEMPT TO REPLACE THIS PLUG WITH THE PUMP STILL IN THE TRUCK. REMOVE PUMP BEFORE INSTALLING.

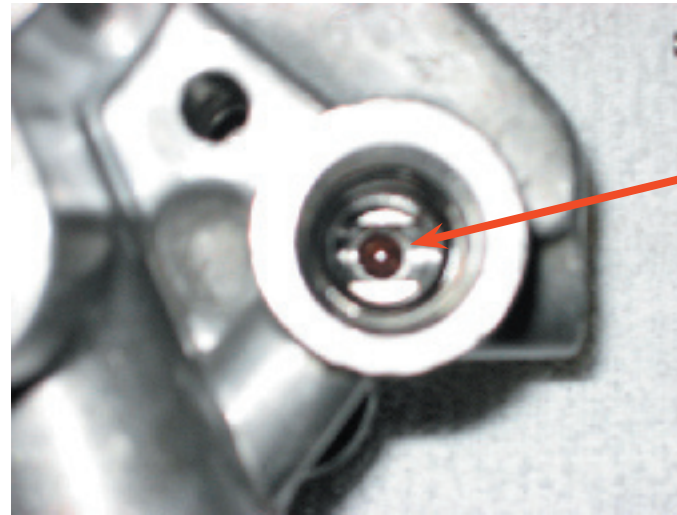
Place the pump nose down on a flat surface. Use the gear as a base if you need extra stability. The IPR should be pointing up. Remove the IPR with a 1 1/8" deep well socket. LEFT: PUMP WITH IPR REMOVED, STANDING WITH BACK OF PUMP FACING UP.

If you look down through the IPR hole, you'll see the pocket where a 1/4" plastic ball rests. If there is no ball, find it.

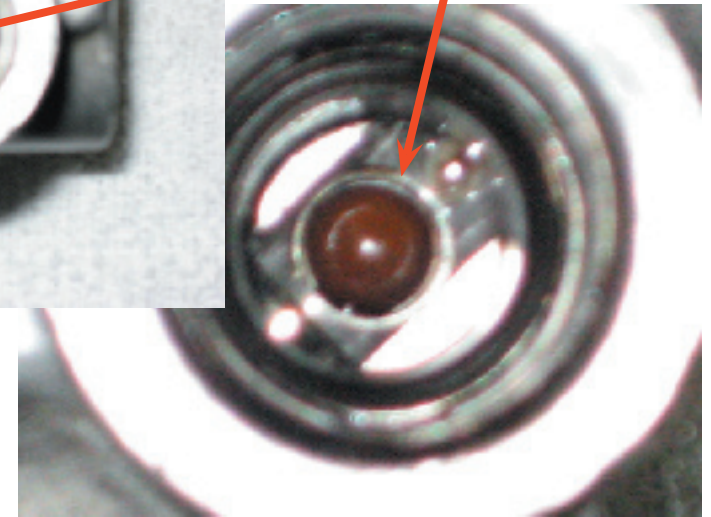




EDGE FILTER
INSTALLED



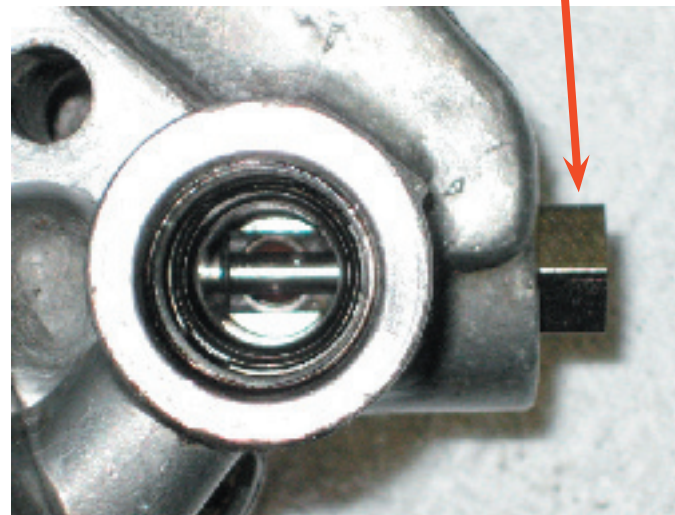
PLASTIC BALL
(CHECK BALL)
INSTALLED



If this is a 1996 - 2003 model year stock pump, or any year of Adrenaline or a Pulse pump then there will also be a steel block of metal (edge filter) that needs to be pushed all the way into the hole. It will go past the pocket for the ball when installed correctly. 94/95 model year "stock" pumps will not have this edge filter.

After inserting the edge filter, drop the ball down the IPR hole into the pocket.

Next, using a 13mm wrench install the plug using a small amount of low strength loc-tite. **DO NOT OVERTIGHTEN!** This is an o-ring boss thread and you only tighten until metal hits metal. Tighten until the plug makes contact and do not overtighten. The pin end of the plug actually holds the ball and edge filter in place when installed correctly.



PLUG
INSTALLED



ANOTHER VIEW OF PLUG INSTALLED