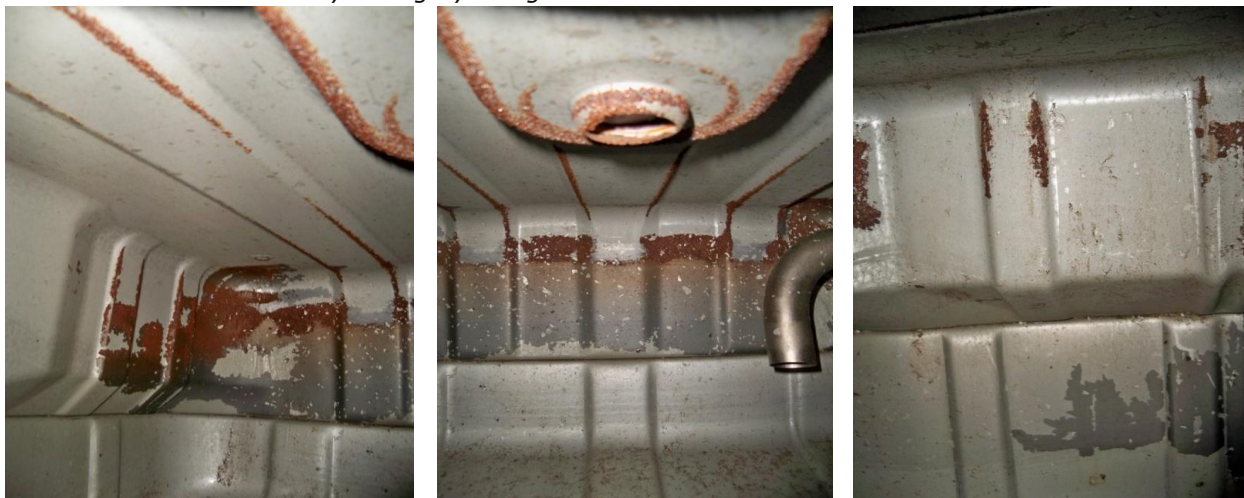


Filter, Pump & Injector Failures?

Many original equipment steel tanks are lined with a protective coating that can break down when exposed to certain agents and additives associated with today's low-sulfur diesel and bio-diesel fuels. These compositions can cause the steel tank linings to delaminate, resulting in particulate matter contaminating the entire fuel path. This manifests in a loss of power, frequent need to replace filters—and if not caught in time—the very costly failure of pumps and injectors.

Very little gray lining remains on the interior of this tank.



"Costs due to fuel tank lining failures were mounting and the repair and downtime impact was becoming a sizable problem for our fleet. After analyzing the results of a trial program using Titan's cross-linked polyethylene tanks, our department made the decision to replace all the steel fuel tanks on our Ford F-350, F-450 and F-550 cab and chassis vehicles with new Titan polymer fuel tanks."

Matt Long, Hwy Equipment Supervisor - West Virginia Dept of Highways

"Titan's fuel tank fixes a problem that my Ford dealership has been seeing for over 15 years. Before Titan's solution, we had no choice but to replace one steel tank with another steel tank destined to fail."

Greg Vice, Principal and Service Manager – Kenny Vice Ford, Ladoga IN



OEM Tank



8020099 40 gal 1999-2010

8020011 40 gal 2011-2015

8020199 55 gal 1999-2010
(Cutaway Vans)

Because this problem is fuel-related it is not covered on Ford's warranty policy. Once lining contamination is detected, all affected components must be replaced to bring qualified vehicles back into compliance. Titan's poly tank assures no repeat of the problem.

TITAN FUEL TANKS

800-728-4982 • 208-522-1325