



## STEP 1 – PRIOR TO INSTALLATION

- A) Bushwacker only** approves installing the flares according to these written instructions with the hardware provided. **WARNING:** Failure to install according to these instructions will invalidate the warranty. This includes, but is not limited to using alternative installation methods, hardware, or materials. **DO NOT USE:** Loctite, SuperGlue, or similar products on the hardware or the flares.
- B) Fit:** Verify the fit of the flares to vehicle. (Some filing, sanding, or cutting may be necessary to ensure proper fit).
- C) Painting:** (Optional) if paint is desired it must be done prior to installing flares on vehicle. Clean outer surface with a good grade degreaser. **DO NOT USE LACQUER THINNER OR ENAMEL REDUCER AS A DEGREASER.** Wipe outer surface thoroughly with a tack rag prior to paint. Application of plastic adhesion promoter for ABS plastic as per your paint system manufacturer's recommendations is required. Paint flares using a high quality enamel, or polyurethane automotive paint. If painting edge trim (not recommended), use a flex additive.
- D) Performance:** Using larger Tires may increase the area required to turn the vehicle. Some Tire/Rim combinations may require lowering bump stops and or installing steering stops to prevent tire from contacting flare.
- E) Exhaust System:** Modifications may be necessary to maintain a minimum 4" clearance between flares and exhaust pipes. (Exhaust gases should not vent directly onto flares)
- F) Metal Protection:** All exposed fasteners and bare metal should be treated with rust resistant paint **BEFORE** installing flares. Spray inner fender wells with undercoating **AFTER** flare attachments have been completed.
- G) Decals:** Flares may interfere with existing decals on vehicle. If you wish, remove decals prior to installation of flares.
- H) Care & Cleaning:** Bushwacker fender flares are built to last; any detergent you use to wash your vehicle is sufficient to clean the flare. Do not use any harsh abrasive detergents.

# Dodge Pocket Style® Fender Flares Set of 4

Set Part #50911-02

Rev-8 03/01/2016

For complete fitment info visit : [www.bushwacker.com](http://www.bushwacker.com)

## TOOLS FOR EASY INSTALLATION:

- Utility Knife
- #2 Phillips Driver
- Socket Wrench
- 8mm Socket
- 1/2" Wrench
- Awl or Similar Pointed Tool
- Grease Pencil

**PLEASE READ:** Dirt and debris can become lodged between the fender flares and the vehicle's fenders, causing scratching and paint wear from vibration. Lund International is not responsible for any damage, and the installation of our fender flares is done with the buyer's understanding that this scratching and paint wear may occur.

## LIMITED LIFETIME WARRANTY AGAINST ANY MANUFACTURING DEFECTS

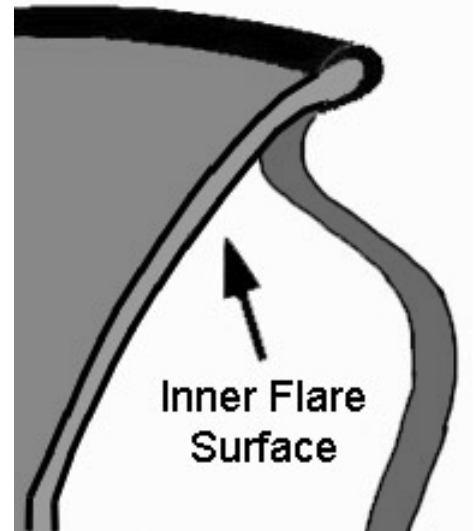
- To claim a warranty, you must provide Proof of Purchase.

## Included in Hardware Kit:

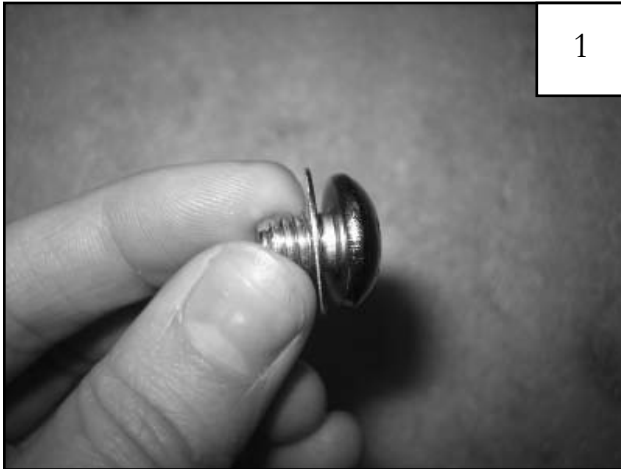
- |  |   |   |   |  |   |   |
|--|---|---|---|--|---|---|
| 1.   | 2.  | 3.  | 4.  | 5.   | 6.  | 7.  |
|  |  |  |  |  |  |  |
| CL1-0009,<br>Long "U" Clip,<br>Magni 565<br>8 pcs                                  | SW1-0056,<br>#8 x 3/4"<br>PH Screw,<br>8 pcs  | SW1-0067,<br>5/16 x 18 x 3/8"<br>SS Torx Screw,<br>38 pcs                           | WA1-0012,<br>.320 x .700 x .03<br>SS Washer,<br>38 pcs                              | NU1-0019,<br>5/16-18 Jam Fin.<br>Nylock Nut,<br>38 pcs                               | SW1-0052,<br>T-45 Torx Bit,<br>1 pc   | GP1-0008,<br>Duro (NC02/S 70)<br>Edge Trim,<br>312 inches                             |

## STEP 2 - EDGE TRIM INSTALLATION

- A)** Peel two to three inches of red vinyl backing away from Edge Trim (GP1-0008) tape. Applying the adhesive side of the edge trim to the inner side of the flare, affix the edge trim to the top edge of the flare (the portion that comes in contact with the vehicle).
- B)** Press edge trim into place along the top edge of the flare in one-foot increments, pulling red vinyl backing free as you continue to work your way around the top edge of the flare.



## Pocket Hardware Installation:



Put a Washer (WA1-0012) on each Bolt (SW1-0067).

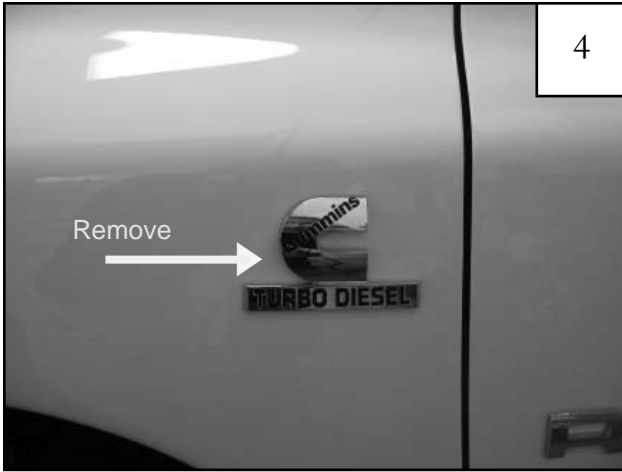


Put each Bolt/Washer combination through a pocket hole in the flare, Bolt head and Washer on the outside.

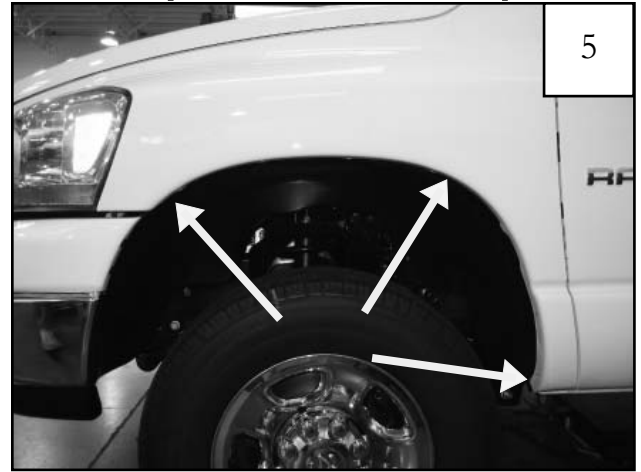


Place a Nut (NU1-0019) over the end of each Bolt and tighten, using a 1/2" wrench for the Nut and the supplied Torx Bit (SW1-0052) for the Bolt. Repeat for remaining pockets.

## Front Flare Installation Procedures (Driver's Side):



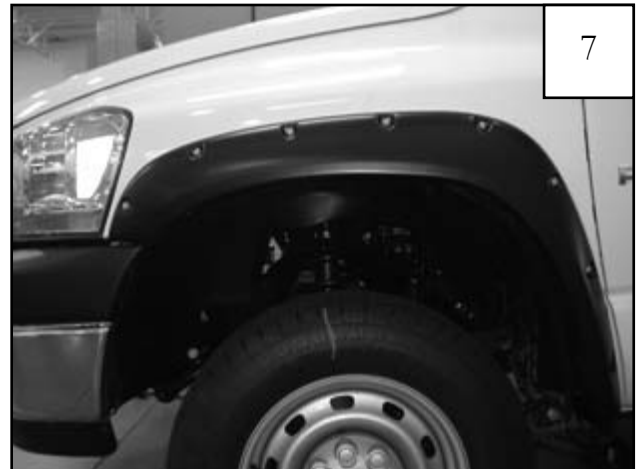
If there is a Cummins logo on the vehicle, it must be removed prior to installing front flares.



Using an 8mm socket, remove three factory screws from wheel well. Save for reinstallation.

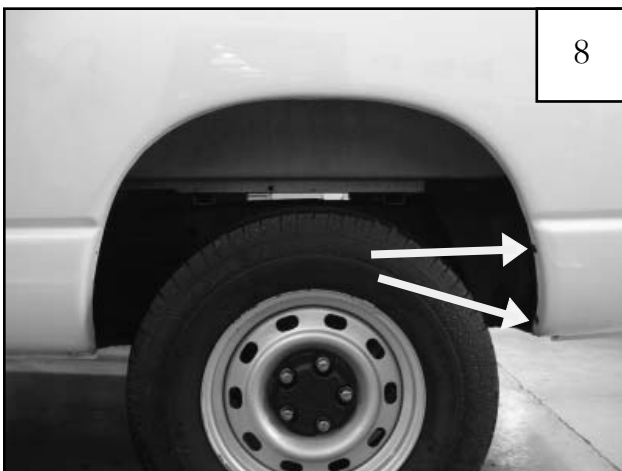


Holding flare in position on fender, reinstall screws removed in Step 5.



Make sure flare is correctly positioned on vehicle. Tighten all screws.

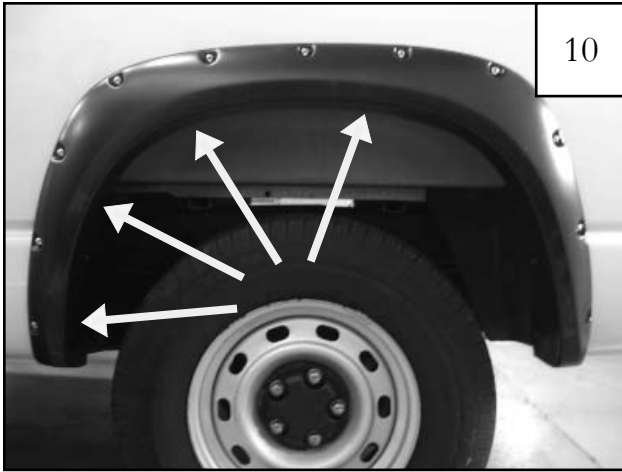
## Rear Flare Installation Procedures (Driver's Side):



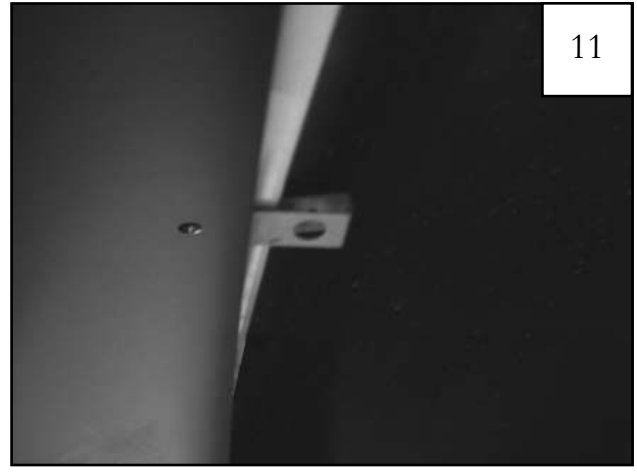
Using an 8mm socket, remove two factory screws from rear of wheel well. Save for reinstallation.



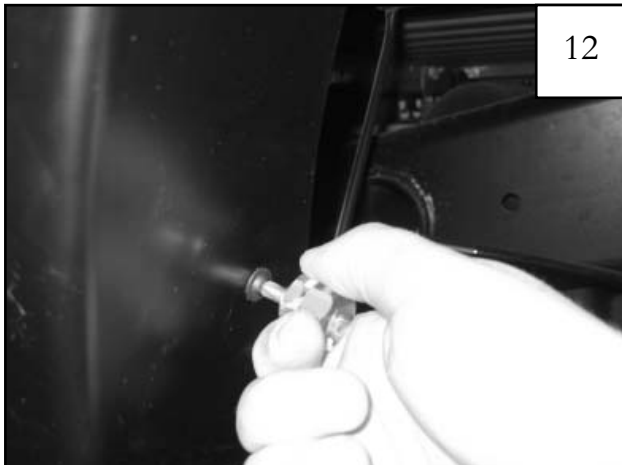
Holding flare in position on fender, reinstall screws removed in Step 8. Do not tighten. (An awl may be used to align the threaded clip with holes in flare and fender lip) Note: Make sure screws engage in splash shield.



Slide a supplied Clip (CL1-0009) over fender lip, aligning with existing holes in fender flare (4 places).



The top two Clips will be offset of fender to allow for screw to tighten (there are no factory holes in fender at these locations).



Using #2 Phillips Screwdriver, insert a supplied Screw (SW1-0056) through existing holes in flare and into holes in clips (4 places).



Make sure flare is positioned correctly on vehicle. Tighten all screws.