



Installation Instructions CAST ALUMINUM DIFFERENTIAL COVER FOR CHRYSLER 9.25" AXLE

Catalog #10306
(see Application Guide for specific vehicles)

INTRODUCTION

Your B&M Cast Aluminum Differential Cover has been designed to work on most vehicles equipped with a Chrysler 9.25" axle. The B&M cover provides several advantages over the stock cover:

- Thick, cast aluminum construction increases case rigidity.
- Reinforced center bar and load screws prevent bearing cap deflection under severe loads.
- Increased oil capacity for cooler operation.
- Magnetic drain plug allows regular gear oil changes without the usual mess, and captures ferrous wear metal.

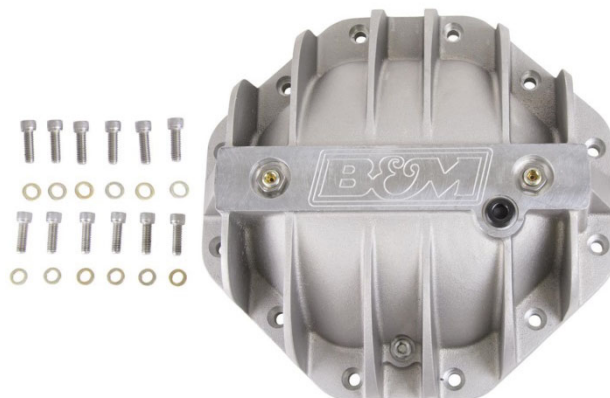
Please read and understand these instructions before installing your B&M differential cover.
Installation takes about an hour.

WORK SAFELY! Perform the installation on a clean, level surface, with the vehicle's engine turned off, the parking brake engaged, and the transmission in PARK (if automatic) or first gear (if manual). Allow the vehicle to cool off sufficiently to avoid burns from hot parts and oil. Use jack stands, wheel ramps or a hoist to raise the vehicle 1-2 feet for ease of access. **MAKE SURE VEHICLE IS FIRMLY SUPPORTED! NEVER WORK UNDER ANY VEHICLE SUPPORTED ONLY BY A JACK!** Also, have a small box in which to keep removed hardware, and a suitable drain pan.

CAUTION: To avoid any possibility of bodily injury or damage to vehicle, do not attempt installation until you are certain that the vehicle is securely supported and will not move.

KIT PARTS

QTY	ITEM
1	Diff cover, Chrysler 9.25", aluminum
12	Cap screw, 5/16-18 × 1"
12	Washer, 5/16" ID
1	Fill plug, 1/2" NPT
1	Drain plug, magnetic, 1/4" NPT
2	Load screw, hex drive, w/swivel pad
2	Jam nut, load screw



REQUIRED TOOLS AND MATERIALS

- Jack and jack stands
- Drain pan
- Lint-free rags
- 3/8" ratchet and 3" extension
- 1/2" and 3/4" socket
- 1/4" and 3/8" Allen bits
- Torque wrench
- Gasket scraper
- Flat head screwdriver
- Gear oil pump
- 5/16-18 thread chaser or tap
- RTV silicone sealant (gear oil-compatible)
- Nylon thread tape
- Gear oil (per manufacturer's specification)
- Brake cleaner

INSTALLATION

1. To avoid contaminating the differential, clean dirt and debris from the area around the cover.

NOTE: On some vehicles, access to the cover may be made easier by removal of surrounding parts (e.g. sway bar, Panhard rod, etc.).

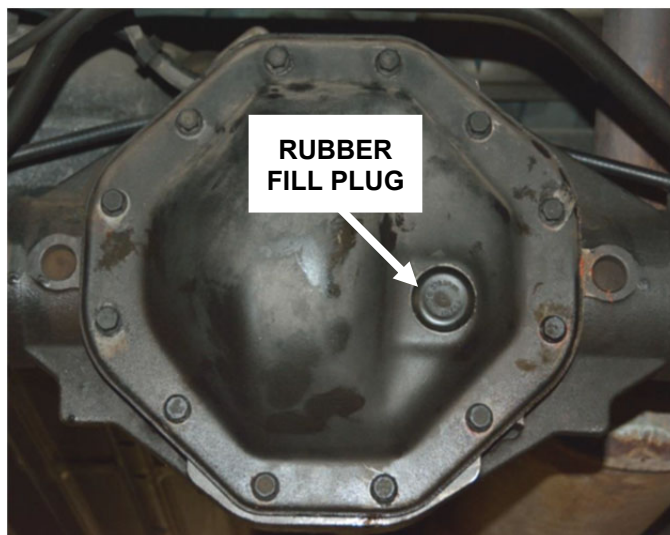
2. Place a drain pan under the differential housing.

3. Use a flat head screwdriver to remove the rubber fill plug (for faster oil drainage).

4. Remove all cover screws except one at the top. Then loosen (but do not remove) the last screw.

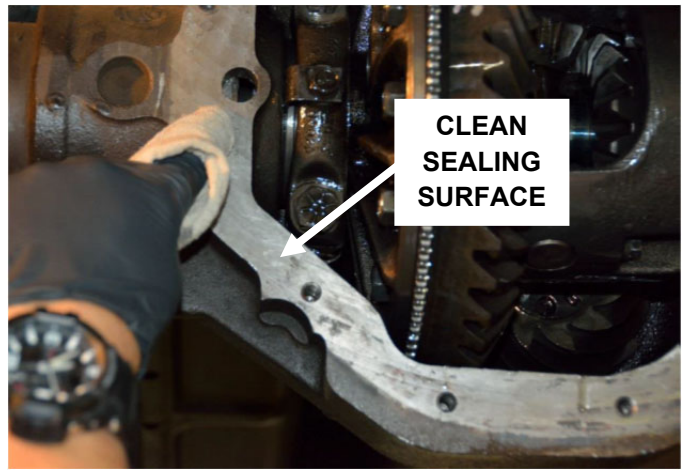
5. Carefully pry the cover loose with a flat head screw driver, using caution to avoid damaging the seal surface. Allow the oil to drain.

6. When the oil has completely drained, remove the last screw and the cover. **Inspect oil for metal particles, which may indicate worn gears or bearings.**

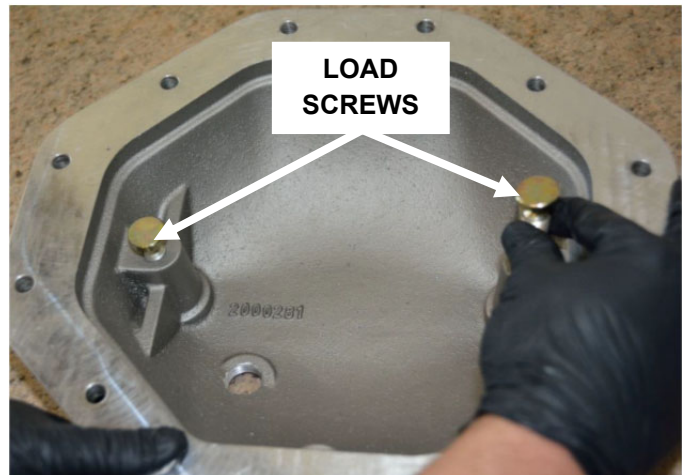


7. Using brake cleaner and a lint-free rag, clean the internal components. **Inspect differential components for broken gear teeth, excessive wear, etc.**

8. Use a gasket scraper to clean all the old gasket material from the axle housing flange, then wipe the flange with brake cleaner.
9. Clean the screw hole threads with a 5/16-18 thread chaser or tap, to ensure accurate screw torque during assembly.



10. Thread the 2 supplied load screws all the way into their bosses on the inside of the B&M differential cover.



11. Apply gear oil-compatible RTV silicone sealant to the flange of the B&M differential cover. Run the sealant between the screw holes and the inside edge of the flange.

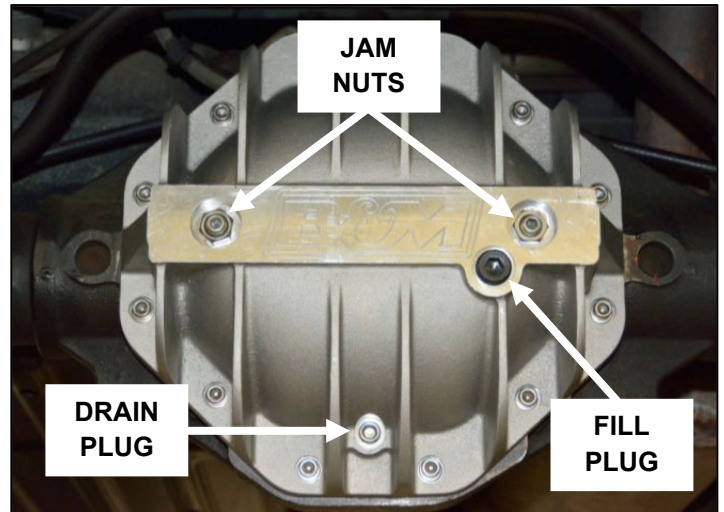
NOTE: Follow all manufacturer instructions for use of RTV sealant (e.g., screw tightening, drying time, etc.).



12. Install the cover on the differential housing using the 12 supplied screws and washers. Tighten the screws in an alternating or "criss-cross" pattern to 15 ft-lbs torque.
13. Use an Allen bit socket to run the two load screws in by hand until they touch the bearing caps. Then tighten the load screws to 5 ft-lbs torque.

CAUTION: Do not over-torque the load screws, as this can distort the bearing caps, and cause abnormal differential wear and premature failure.

14. Apply a small amount of RTV sealant to the exposed threads of the load screws, then install the 2 supplied jam nuts on the load screws. Tighten the jam nuts to 5 ft-lbs torque.
15. Apply 2 wraps of nylon thread tape to the magnetic drain plug, install it in the differential cover, and tighten it to 25-30 ft-lbs torque.



16. Fill the differential with manufacturer-specified gear oil. The bottom of the fill hole is the proper level.
17. Apply 2 wraps of nylon thread tape to the fill plug, install it in the differential cover, and tighten it to 25-30 ft-lbs torque.
18. Reinstall and tighten any vehicle parts (e.g., sway bar, Panhard rod) that may have been removed.

Congratulations, the installation of your B&M differential cover is now complete!

IMPORTANT: RETAIN THESE INSTRUCTIONS FOR FUTURE REFERENCE.

