



## INSTALLATION INSTRUCTIONS

MAKE: GM  
MODEL: Silverado HD/ Sierra HD  
YEAR: 2001-2004  
ENGINE: V8-6.6L (td) LB7

## Twisted Steel Headers, Up-Pipes 48-34009



### Parts Included

- (P/N 05-145114) S/A Tube, Right Up-Pipe
- (P/N 05-145115) S/A Tube, Left Up-Pipe

**CAUTION:** Allow time for your vehicle to cool down prior to installation. When working on or under your vehicle proceed with caution. Exhaust systems reach high temperatures and may cause serious burns. Wear protective safety equipment; eye goggles and gloves to ensure a safe installation. aFe recommends professional installation on our products.

**Step 1:** Disconnect vehicle batteries before installation.

**Step 2:** Remove the right and left front wheels and inner fender panels.

**Step 3:** Remove the bolt securing the down pipe to the bracket on the up pipe.

**Step 4:** Remove the two V band clamps on the down pipe and remove the down pipe.

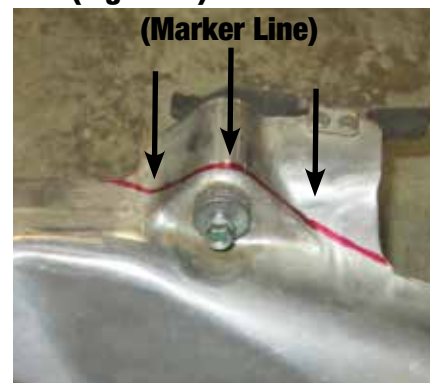
**Step 5:** Remove the six bolts securing the right side up pipe to the exhaust manifold and turbo manifold and remove the right side up pipe.

**Step 6:** Remove the six bolts securing the left side up pipe to the exhaust manifold and turbo manifold and remove the left side up pipe.

**Step 7:** Install the left side aFe power up pipe using the factory hardware and new gaskets, and torque to 39 lb.-ft.

**Step 8:** Install the right side aFe power up pipe using the factory hardware and new gaskets, and torque to 39 lb.-ft.

**Step 9:** It will be necessary to trim the down-pipe heat shield on the marker line to clear the right side aFe power up pipe. (see Figure1)



**Step 10:** Reinstall the down pipe using the factory hardware.

**Step 11:** Reinstall the right and left front wheels and inner fender panels.

**Step 12:** Reconnect the batteries. Your installation is now complete. Thank you for choosing aFe power.