

advanced FLOW engineering

Instruction Manual P/N: 46-70060 / 46-70061 / 46-70062

Make: **Dodge** Model: **RAM 2500/3500** Year: **2007.5-2012** Engine: **L6-6.7L (td)**



- Please read the entire instruction manual before proceeding.
- Ensure all components listed are present.
- If you are missing any of the components, call customer support at 951-493-7100.
- Ensure you have all necessary tools before proceeding.
- Do not attempt to work on your vehicle when the engine is hot.
- Disconnect the negative battery terminal before proceeding.
- Retain factory parts for future use.

Label	Qty.	Description	Part Number
A1	1	Trans. Pan - Black Fins (46-70061)	05-60066
A2	1	Trans. Pan - Black, Machined Fins (46-70062)	05-60067
A3	1	Trans. Pan - Raw, Machined Fins (46-70060)	05-60067A
B	1	Silicone (3 oz Tube)	05-60096
C	1	Plug, Square Socket Head, 3/4" - 14 NPTF Magnet	03-50222
D	1	Plug, Hex Head Socket, 1/8" - 27 NPT (Zn Plt)	03-50029
E	15	Socket Head Cap Screws	03-50241
F	15	Flat Washers	03-50235

Installation will require the following tools:

Oil Drain Pan (12 QT. Capacity Minimum), Gasket Scraper, 10mm Socket, 5mm Allen Bit, 3/16 Allen Bit, Ratchet, 3/8" and 1/2" Torque Wrench.

A1



B

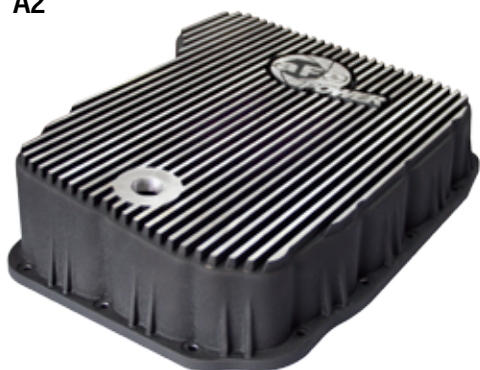


C

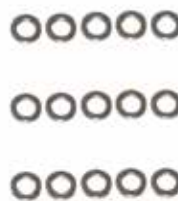


D

A2



E



F

A2





Refer to Figure A for steps 1-4

Step 1: Park your truck on level ground and apply the parking brake.

Step 2: Position a drain pan under the transmission pan.

Step 3: Begin by loosening the 7 screws on the rear of the transmission pan.

Step 4: Loosen the 8 screws on the front of the transmission pan. DO NOT remove screws yet.

NOTE: You may need to pry the pan so the old fluid can start draining.



Refer to Figure B for steps 5-7

Step 5: Begin removing the screws one by one from rear to front of pan to let more of the fluid drain out.

Step 6: Once you get the majority of the fluid drained out, you can remove the transmission pan from the vehicle.

Step 7: Once the transmission pan is removed, check the mounting surface for any irregularities.

Should there be any, carefully remove high spots using a smooth flat file.

DO NOT "ROUND OFF" THE FLAT GASKET SURFACE!

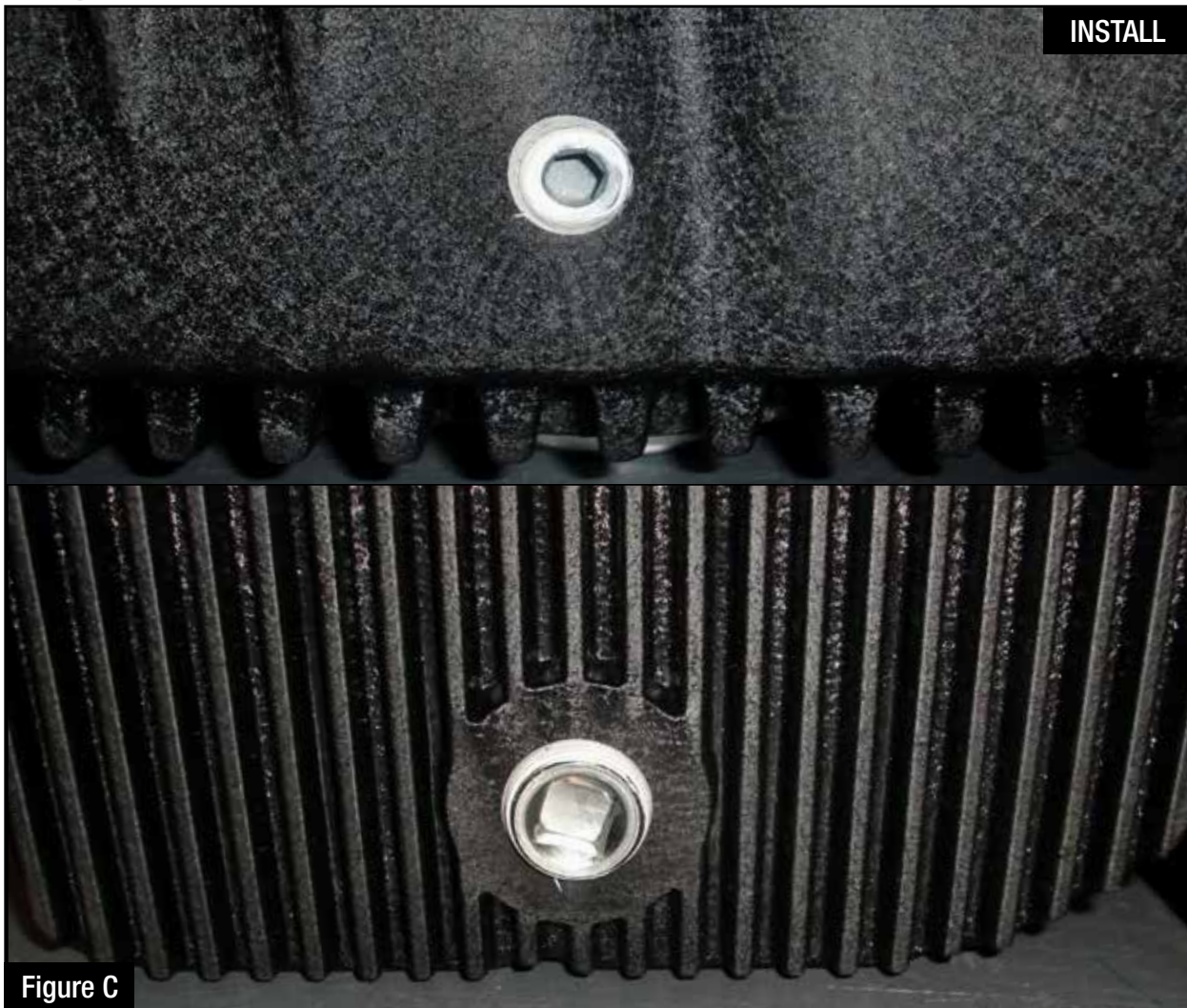


Figure C

Refer to Figure C for step 8-10

Step 8: Apply teflon pipe sealant tape on the threads of all the plug components before installing.

Step 9: Install your temperature sensor or the 1/8" NPT plug on the back of the aFe transmission pan (torque to 30 in.-lbs.).

Step 10: Install the drain plug on the bottom of aFe transmission pan (torque to 50 ft.-lbs.).

**Figure D****Refer to Figure D for step 11**

Step 11: Now use the tube of silicone provided to create your gasket around the mounting surface of the aFe transmission pan. Allow 15-20 minutes for silicone to skin-over.



Figure E

Refer to Figure E for steps 12-14

Step 12: Install the aFe transmission pan by aligning the screw holes and start the first 4 allen cap screws and washers in the 4 corner screw holes. Continue around the bolt pattern until all 15 screws and washers are installed and finger tight.

Step 13: Wait about 1 hour to allow the silicone to cure.

Step 14: Using a 5mm hex bit and a 3/8 drive torque wrench, torque the allen cap screws to 7-9 ft.-lbs. in a cross tight pattern.



Figure F

Refer to Figure F for step 15-16

Step 15: Refill the aFe transmission pan with new transmission fluid, which holds about 2.5 quarts more than stock.

Step 16: If fluid level is good, be sure to reinstall your transmission dip stick.



Figure G

Refer to Figure G for step 17

Step 17: Your install is now complete.

NOTE: Retighten all connections after approximately 100-200 miles.

Page left blank intentionally



Page left blank intentionally

Page left blank intentionally



Differential Cover



P/N: 46-70040

Intake Manifold



P/N: 46-10071-1

Air Intake



P/N: 50-72003

Exhaust System



P/N: 49-42016-B

F3 Torque Converter



P/N: 43-12031

Exhaust System



P/N: 49-42030-P

Oil Cap



P/N: 79-12001

Air Intake



P/N: 54-81342

Warranty

General Terms:

- aFe warrants their products to be free from manufacturer's defects due to workmanship and material.
- This warranty applies only to the original purchaser of the product and is non-transferrable.
- Proof of purchase of the aFe product is required for all warranty claims.
- Warranty is valid provided aFe instructions for installation and/or cleaning were properly followed.
- Proper maintenance with regular inspections of product is required to insure warranty coverage.
- Damage due to improper installation, abuse, unauthorized repair or alteration is not warranted.
- Incidental or consequential damages or cost, including installation and removal of part, incurred due to failure of aFe product is not covered under this warranty.
- All warranty is limited to the repair and/or replacement of the aFe part. To request Return Goods Authorization ("RGA"), email RGA@afepower.com or call (951)493-7100. Upon receipt of the RGA, you must return the product to the address provided in the RGA, freight prepaid and accompanied with a dated proof of purchase and the RGA. Upon receipt of the defective product and upon verification of proof of purchase, aFe will either repair or replace the defective product within a reasonable time, not to exceed thirty days.

Product Category	P/N Prefix	Warranty duration
Direct OE Replacement Filters	10, 11, 30, 31, 71, 73	Life of the vehicle
Racing Filters	18	1 year
Universal	21, 24, 72	2 years
Air Intake Systems	50, 51, 54, 55, 75	2 years
Exhaust Systems	49	2 years
Intercoolers & Intercooler Tubes	46-2	2 years
Intake Manifolds	46-1	2 years
Differential Cover/Transmission Pan	46-7	Life of the vehicle
Exhaust Manifolds	46	2 years
Throttle Body Spacers	46-3	2 years
Fluid Filters	44	90 days
Pre-Filters	28	2 years
Heavy Duty OE Replacement	70	2 years
PowerSports OE Replacement	81, 87	2 years
PowerSports Intake Systems	85	2 years

No other warranty expressed or implied applies nor is any person or advanced FLOW engineering authorized to assume any other warranty. Some States do not allow the exclusion or limitation of incidental or consequential damages or do not allow limitations on how long an implied warranty lasts, so the above limitations or exclusions may not apply to you. This warranty gives you specific legal rights, and you may also have other rights which vary from State to State.



advanced FLOW engineering, inc.

252 Granite Street Corona, CA 92879

TEL: 951.493.7100 • TECH: 951.493.7100 x23

E-Mail: Tech@aFepower.com