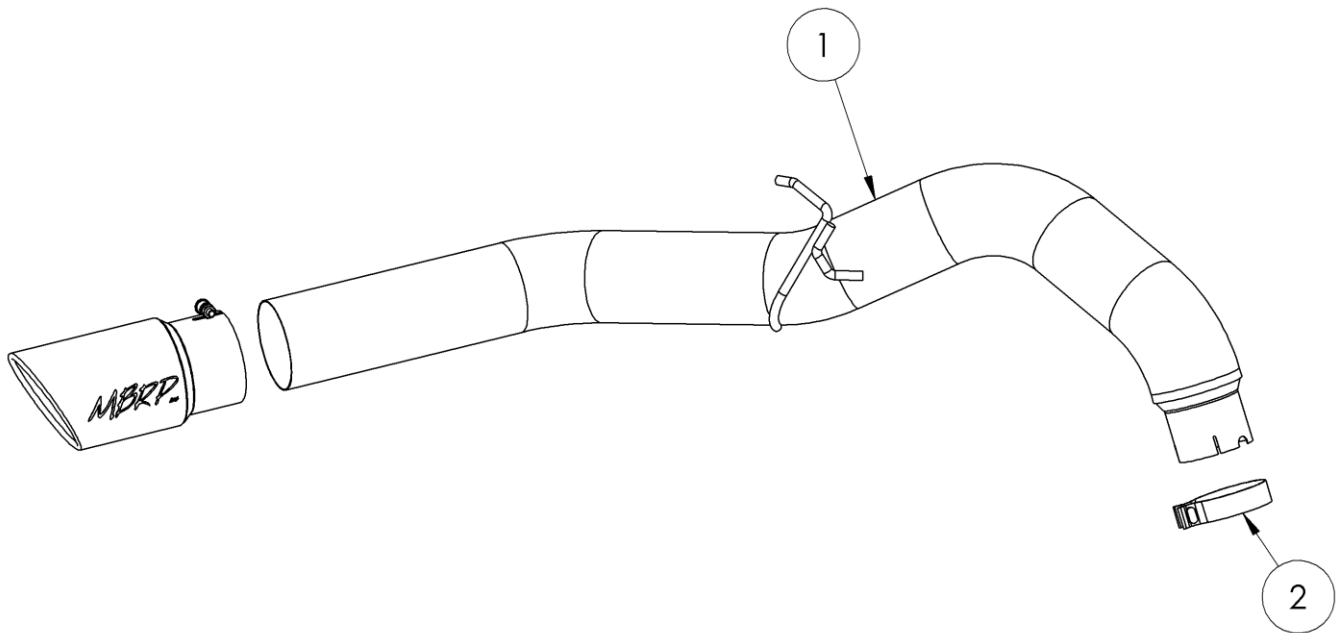


S61640

13-UP RAM 2500 6.7L CUMMINS, FILTER
BACK, 5" SINGLE SIDE - ALL EXCEPT CREW
CAB SHORT BOX

MBRP
INC.
PERFORMANCE EXHAUST



1. TAIL PIPE
2. 4" CLAMP
3. EXHAUST TIP

NOTE: NOT RECOMMENDED FOR VEHICLES EQUIPPED WITH AIR SUSPENSION

PLEASE READ BEFORE STARTING INSTALLATION

While MBRP Inc. has made every effort to ensure that all components of this system are of superior quality and properly packaged, it is the installer's responsibility to ensure the following before removal of the factory exhaust:

- that ALL components shown above are present.
- that ALL mating components fit together.
- that there are no damaged components.
- that the system you have purchased is appropriate for your vehicle year, model and configuration.
- that the system will not interfere with any modifications previously installed or planned.
- that you have read and understand these instructions.

If you have any questions or are uncertain about any aspect of the installation of this system to your vehicle please contact your dealer before commencing installation.

Removal of Stock System:



Figure 1

1. Apply a penetrating lubricant liberally to all exhaust fasteners, hangers and rubber insulators.

2. Lower the spare tire and remove the spare tire heat shield (4 bolts).

Refer to Figure 1.

2. Loosen the nut on the clamp on the factory tailpipe.

Refer to Figure 2.

3. Remove the tail pipe from the extension pipe and then from the factory rubber insulator. Remove the stock tail pipe from the vehicle.

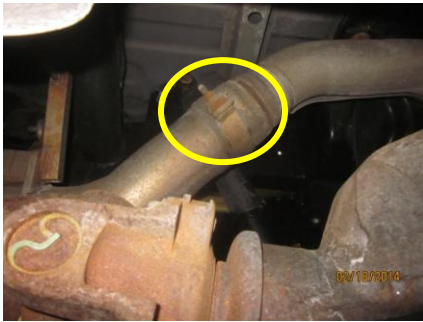


Figure 2

Installation of MBRP Inc. Performance Exhaust

1. Slide the **4" Clamp** onto the outlet end of the extension pipe. Install the **5" Tail Pipe** from the rear of the truck, over the axle and install into the factory rubber insulator. On some trucks it may be easier to remove the rubber insulator, then reinstall once the **5" Tail Pipe** is in place.

Refer to Figure 3.

2. Install the **5" Tail Pipe** onto the extension pipe, taking care to align the tab on the filter to the slot in the **5" Tail Pipe**.

Refer to Figure 4.

3. Re-install the spare tire heat shield and raise the spare tire into position.

4. Align the exhaust as required. Starting at the front of the exhaust, tighten all clamps and connections.

5. Install and adjust the **Exhaust Tip** to suit. Tighten the lock bolt located on **Exhaust Tip**.

6. Check along the whole length of the exhaust system to ensure that there is adequate clearance around the spare tire, fuel and brake lines or any wiring. If there is any interference detected relocate or adjust.



Figure 3



Figure 4



Congratulations! You are ready to begin enjoying the improved performance and driving experience of your MBRP Inc. performance exhaust system. We hope you enjoy your purchase.