

INSTALLATION INSTRUCTIONS

PRODUCT: SUREFLO SENDING UNIT FOR LLY/LBZ/LMM DURAMAX

FPE-2021-64
September, 2021
Page 1 of 5

FITMENT: 2004.5-2010 Duramax equipped Chevy/GMC trucks

KIT P/N: FPE-SF-GM-0410

ESTIMATED INSTALLATION TIME: 2-3 Hours

TOOLS REQUIRED: 1/4" drive ratchet, 1/4" drive 8mm socket, 1/2" drive impact or ratchet, 1/2" drive 15mm socket, side cutters, large hammer, and punch or chisel.

IMPORTANT: SureFlo performance sending units are designed for use in conjunction with an aftermarket externally mounted fuel pump OR as a replacement sending unit for trucks originally equipped without an in-tank low pressure lift pump.

KIT CONTENTS:

Item	Description
1	SureFlo sending unit
2	Fuel level float arm
3	O-ring
4	Adapter harness
5	-8 to 3/4"-16 straight male fitting w/ o-ring
6	90 degree -8AN to 1/2" pushlock



WARNINGS:

- Fuel lines must be clean before installation.
- Never run the fuel pump dry, always ensure there is fuel in the tank before powering the pump on for the first time.
- The purchaser and end user releases, indemnifies, discharges, and holds harmless Fleece Performance Engineering, Inc. from any and all claims, damages, causes of action, injuries, or expenses resulting from or relating to the use or installation of this product that is in violation of the terms and conditions on this page, the product disclaimer, and/or the product installation instructions. Fleece Performance Engineering, Inc. will not be liable for any direct, indirect, consequential, exemplary, punitive, statutory, or incidental damages or fines cause by the use or installation of this product.

INSTALLATION INSTRUCTIONS

FPE-2021-64
September, 2021
Page 2 of 5

INSTALLATION PROCEDURE:

STEP 1: Disconnect batteries and block the tires.

STEP 2: Disconnect the fuel filler line from the top of the fuel tank with an 8 mm socket.

STEP 3: Disconnect the fuel supply and return lines from the fuel cooler located on the front side of the fuel tank.

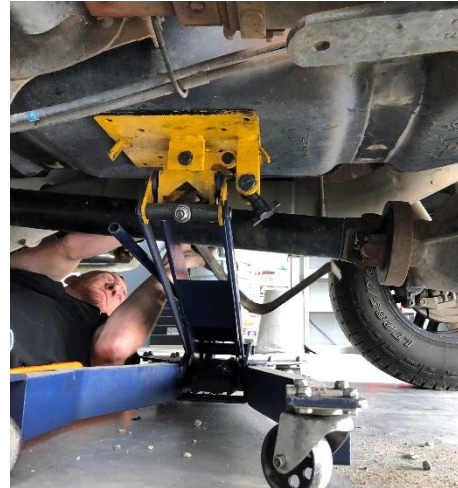
STEP 4: Support the tank with an adequate lift and remove the (2), 15 mm bolts that retain the tank straps.

STEP 5: Lower the fuel tank to the ground. Disconnect the electrical connector from the top of the sending unit.

Move the tank to an area where you have clear access to the tank.

STEP 5: Clean all debris from the top of the tank around the sending unit.

STEP 6: Remove the fuel line quick disconnects from the sending unit using a 1/2" and 3/8" fuel line disconnect tool.

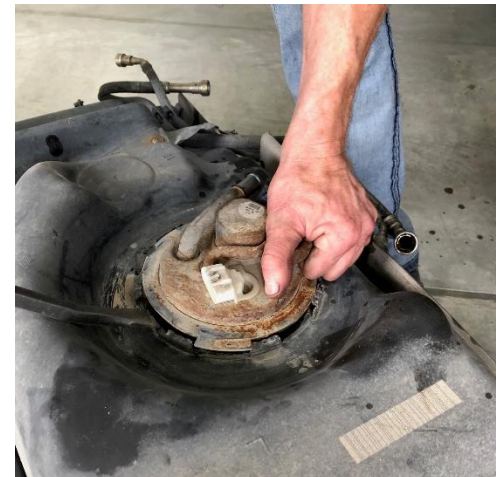


INSTALLATION INSTRUCTIONS

FPE-2021-64
September, 2021
Page 3 of 5

NOTE: Mark the orientation of the sending unit relative to the tank to ensure proper orientation of the SureFlo during installation.

STEP 7: Using a hammer and punch, rotate the retaining ring counter-clockwise. Remove the retaining ring that holds the OEM sending unit into the tank and remove the sending unit from the tank by lifting it upward. Remove and discard the sealing o-ring from the tank.



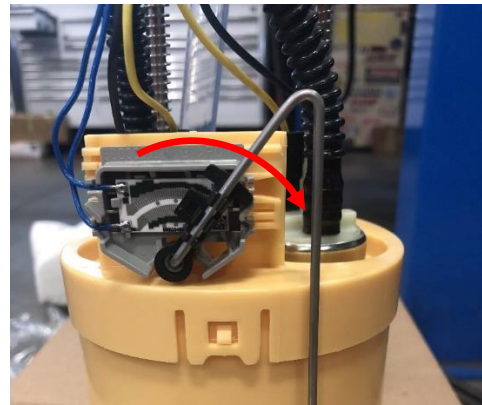
INSTALLATION INSTRUCTIONS

FPE-2021-64
September, 2021
Page 4 of 5

STEP 8: Clean all debris from around the o-ring groove and tank sealing surface. Place your new o-ring supplied in with the SureFlo onto the top of the tank.



STEP 9: Install the fuel level float arm onto the SureFlo assembly by gently clipping the arm into the fuel level sensor.



STEP 10: Install the SureFlo assembly into the tank, use caution with the float arm and do not over-rotate the pump once installed.

NOTE: Use caution when installing the SureFlo to not damage the float arm. Do not rotate the pump once it is installed in the tank, you may damage the float arm or sending unit – align it before you place it into the tank.



INSTALLATION INSTRUCTIONS

FPE-2021-64
September, 2021
Page 5 of 5

STEP 11: Reinstall the original retaining ring using your hammer and punch by rotating it clockwise to the fully engaged position.

STEP 12 (AFTER MARKET LIFT PUMP EQUIPPED TRUCKS ONLY): For aftermarket pumps that have a fuel return from the pump: remove the hex plug located on the side of the sending unit cap and install the -8 to 3/4-16 o-ring fitting and 90 degree push-lock fitting. This will allow you to run your injector return fuel and pump return fuel directly to the SureFlo bucket, ensuring optimal performance. This step must be performed AFTER the retaining ring is in place. Alternatively, you may run your injector return fuel and pump return fuel together prior to the SureFlo head port, thereby requiring the use of only one port. In that case, you will not remove the hex cap.

If your truck has an aftermarket pump previously installed and is returning fuel to the filler neck from the pump, it is required that you re-route this to the pump return fitting on the SureFlo.

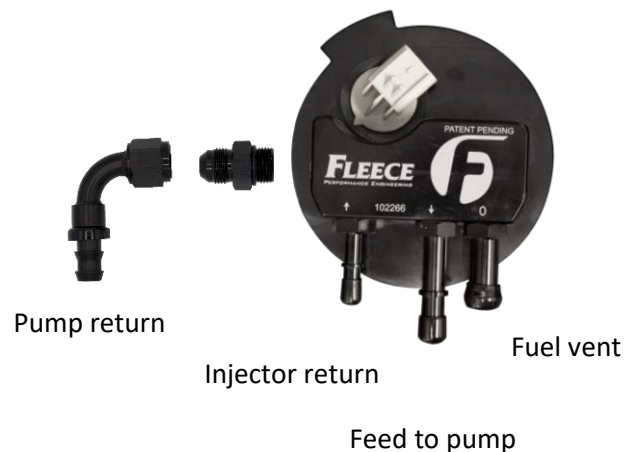
NOTE: There is a spring and poppet located under the hex cap. These components must remain installed when using the port as a secondary return.

STEP 13: Connect the fuel supply, fuel return, and vent line to the SureFlo.

STEP 14: Reinstall the fuel tank. Make the proper connections for the fuel lines. Make sure the quick disconnect fuel lines are fully seated with retaining clips in place. When the quick disconnect fitting is fully seated you will not be able to pull it back off the pump fitting without releasing the retaining clip.

Using the electrical adapter harness provided in the kit, connect one end to the chassis harness that was connected to the OEM sending unit. Connect the free end of the adapter harness to the SureFlo sending unit.

Remove the hex cap to allow for pump return fuel to feed the bucket



INSTALLATION INSTRUCTIONS

