

INSTALLATION INSTRUCTIONS

PRODUCT: SUREFLO SENDING UNIT FOR 2003-2004 DODGE RAM w/ CUMMINS

FPE-2021-60
September, 2021
Page 1 of 8

FITMENT: 2003 – 2004 Dodge Cummins

KIT P/N: FPE-SF-CUMM-0304

ESTIMATED INSTALLATION TIME: 2-3 Hours – Installation completed with the use of a vehicle hoist

TOOLS REQUIRED: 1/4" drive ratchet, 1/4" drive 7mm socket, 1/2" drive impact or ratchet, 1/2" drive 10, 13 and 15mm sockets, 11/16" wrench, large hammer, and punch or chisel, strap wrench, needle nose pliers.

IMPORTANT: SureFlo performance sending units are designed for use in conjunction with an aftermarket externally mounted fuel pump OR as a replacement sending unit for trucks originally equipped without an in-tank low pressure lift pump.

KIT CONTENTS:

Item	Description	Qty
1	SureFlo sending unit	1
2	Fuel level float arm	1
3	O-ring	1
4	-8 to 3/4"-16 straight male fitting w/ o-ring	1
5	5/16" fuel line retainer clip	1
6	3/8" fuel line retainer clip	1
7	90 degree -8AN to 1/2" pushlock	1



WARNINGS:

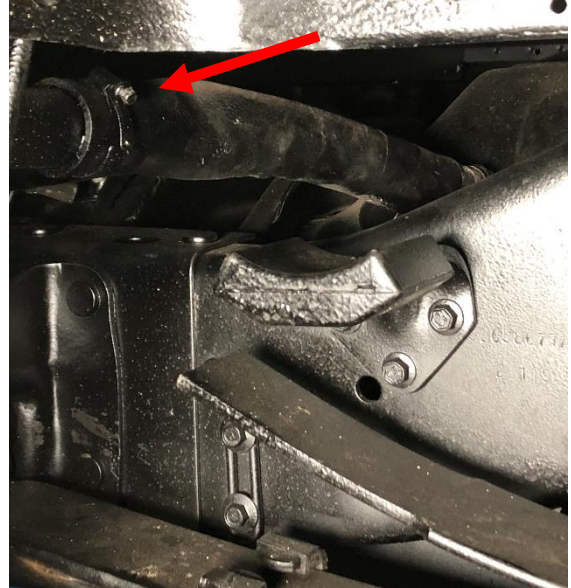
- Fuel lines must be clean before installation.
- The purchaser and end user releases, indemnifies, discharges, and holds harmless Fleece Performance Engineering, Inc. from any and all claims, damages, causes of action, injuries, or expenses resulting from or relating to the use or installation of this product that is in violation of the terms and conditions on this page, the product disclaimer, and/or the product installation instructions. Fleece Performance Engineering, Inc. will not be liable for any direct, indirect, consequential, exemplary, punitive, statutory, or incidental damages or fines cause by the use or installation of this product.

INSTALLATION INSTRUCTIONS

FPE-2021-60
September, 2019
Page 2 of 8

INSTALLATION PROCEDURE:

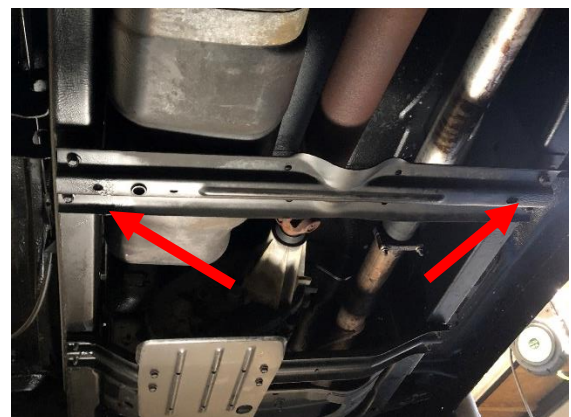
STEP 1: With the truck on a hoist, disconnect the fuel filler hose and vent with a 7 mm socket.



STEP 2: Reaching over the top side of the tank, disconnect the fuel lines and electrical connection for the OEM sending unit.



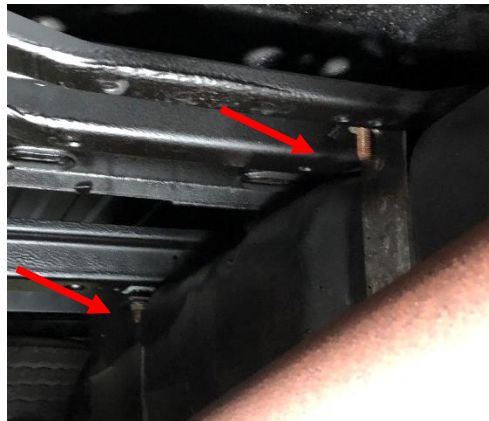
STEP 3: Remove the cross-member located at the front of the fuel tank. There will be (4) - 15mm bolts to remove.



STEP 4: Secure the tank with a lift or jack to lower the tank down to the ground.



STEP 5: Remove 15 mm nuts that retain the fuel tank hanger brackets at the front and rear of the tank. Remove the hangers.



STEP 6: Slowly lower the tank.



INSTALLATION INSTRUCTIONS

FPE-221-60
September, 2021
Page 4 of 8

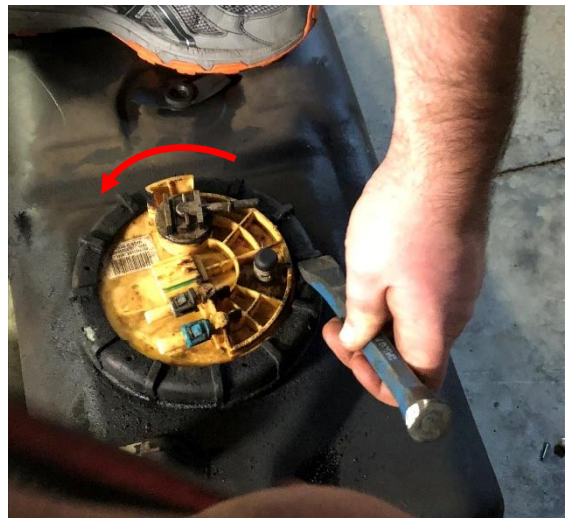
STEP 7: OEM SENDING UNIT REMOVAL

With the tank on the ground, make note of the orientation of the OEM sending unit in the tank.

NOTE: The SureFlo sending unit will be oriented in the same manner during installation.

Using a strap wrench, or hammer along with a chisel or drift, rotate the sending unit's retaining ring counter clockwise.

Remove the retaining ring and remove the sending unit assembly from the tank. Have a bucket nearby to catch fuel from the OE unit when removed.



STEP 8: Remove and discard the original gasket from the tank.



STEP 9: Install the new gasket included in the kit into the fuel tank. Clean the original retaining ring of debris and prepare it for re-use onto the new SureFlo sending unit.



INSTALLATION INSTRUCTIONS

FPE-2021-60
September, 2021
Page 6 of 8

STEP 10: Install the fuel level float arm onto the SureFlo by gently clipping the arm into the fuel level sensor.



STEP 11: Install the SureFlo into the fuel tank. Check that the gasket is fully seated. Ensure proper orientation of the pump and fitting by matching the orientation of the original sending unit.



STEP 12: Reinstall the retaining ring using your hammer and punch or a strap wrench by rotating it clockwise to the fully engaged position

NOTE: Use caution when installing the SureFlo to not damage the float arm. DO NOT rotate it once installed in the tank, you may damage the float arm or sending unit – align the pump before you place it into the tank.



INSTALLATION INSTRUCTIONS

FPE-2021-60
September, 2021
Page 7 of 8

STEP 13: Remove the protective shipping caps from the cap and install the new fuel line locking tab that is included in your kit onto the return side fitting. The supply side fitting is also provided as a quick-disconnect style. For custom routings, the AN straight male adapter fitting can be used as shown at right.



STEP 14: For aftermarket pumps that have a fuel return from the pump: remove the hex plug located on the side of the sending unit cap and install the -8 to 3/4-16 o-ring fitting and 90 degree push-lock fitting. This will allow you to run your injector return fuel and pump return fuel directly to the SureFlo bucket, ensuring optimal performance. This step must be performed AFTER the retaining ring is in place. Alternatively, you may run your injector return fuel and pump return fuel together prior to the SureFlo head port, thereby requiring the use of only one port. In that case, you will not remove the hex cap.

If your truck has an aftermarket pump previously installed and is returning fuel to the filler neck from the pump, it is required that you re-route this to the pump return fitting on the SureFlo.

NOTE: There is a spring and poppet located under the hex cap. These components must remain installed when using the port as a secondary return.

Remove the hex cap to allow for pump return fuel to feed the bucket



INSTALLATION INSTRUCTIONS

FPE-2021-60
September, 2021
Page 8 of 8

STEP 15: Lift the fuel tank into place. Re-install the (2) strap hangers that secure the tank with the (2) 15mm nuts. Install the center support with the (4) - 15mm bolts that were removed.

STEP 16: With the tank mounted in place, access the top side of the tank from the rear wheel-well and make the fuel line connections at the sending unit.



STEP 17: From the driver's side rear wheel-well, connect the electrical wiring harness to the SureFlo lift pump connector.

Key on the vehicle and ensure the fuel level is reading appropriately. Start the engine and check for any fuel leaks before operating the vehicle.



INSTALLATION INSTRUCTIONS

