

INSTALLATION INSTRUCTIONS

SUBJECT: 4TH GEN FUEL FILTER DELETE

FPE-2021-53

April, 2021

Page 1 of 4

FITMENT: 2010-2018 Dodge Ram with Cummins

KIT P/N: FPE-FFD-RO-4G

ESTIMATED INSTALLATION TIME: 2 Hours

KIT CONTENTS:

Item	Description	Qty
1	Fuel filter delete block	1
2	WIF sensor port plug	1
3	Replacement banjo crush washers	4



WARNINGS:

- Use of this product may void or nullify the vehicle's factory warranty.
- User assumes sole responsibility for the safe & proper use of the vehicle at all times.
- The purchaser and end user releases, indemnifies, discharges, and holds harmless Fleece Performance Engineering, Inc. from any and all claims, damages, causes of action, injuries, or expenses resulting from or relating to the use or installation of this product that is in violation of the terms and conditions on this page, the product disclaimer, and/or the product installation instructions. Fleece Performance Engineering, Inc. will not be liable for any direct, indirect, consequential, exemplary, punitive, statutory, or incidental damages or fines caused by the use or installation of this product.

INSTALLATION INSTRUCTIONS

PROCEDURE:

FPE-2021-53
April, 2021
Page 2 of 4

NOTE: To protect fuel system components auxiliary fuel filtration must still be used in conjunction with this product.

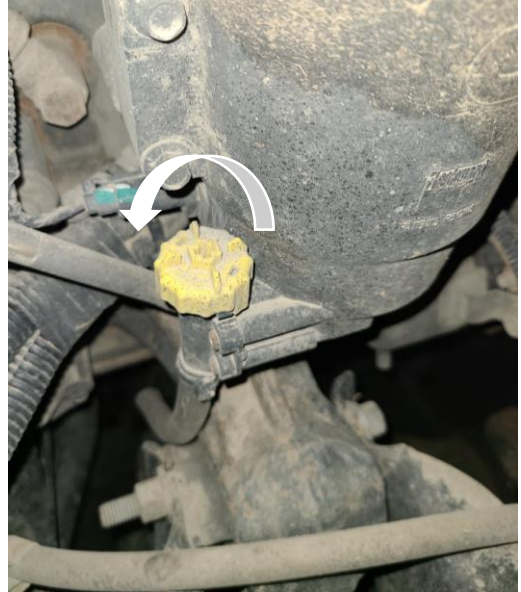
STEP 1: Remove the air intake horn.

STEP 2: Drain the OE fuel filter housing by twisting the yellow knob counter-clockwise.

STEP 3: Disconnect the fuel line connections. One is on the rear of the housing and one is on the bottom.

STEP 4: Unplug the electrical connections for the water in fuel (WIF) sensor and fuel heater.

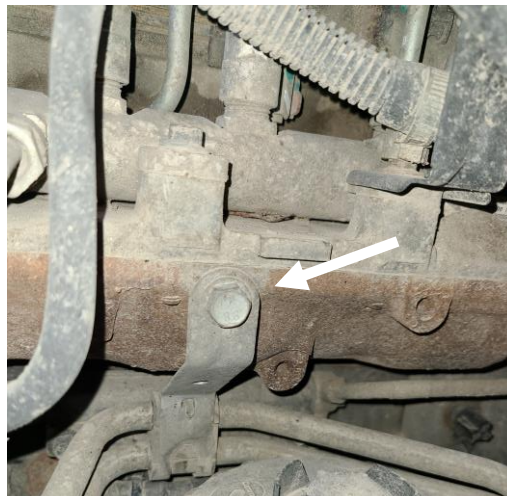
STEP 5: Remove the three bolts from the fuel filter housing and remove the housing (two are on the left side and one is on the right side of the housing).



INSTALLATION INSTRUCTIONS

FPE-2021-53
April, 2021
Page 3 of 4

STEP 6: Remove the two bolts securing the transmission line isolators that run in front of the fuel filter base.



STEP 7: Remove the two zip ties retaining the electrical harness to the fuel filter base.



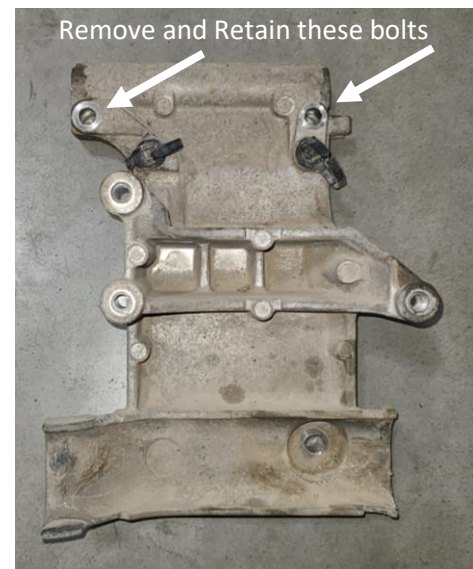
INSTALLATION INSTRUCTIONS

FPE-2021-53
April, 2021
Page 4 of 4

STEP 8: Remove the two fuel line banjo bolts on either side of the fuel filter base.



STEP 9: Remove the three bolts from the fuel filter base and remove it. Retain the two upper most bolts that you have removed, these will be re-used to mount the fuel filter delete block.



STEP 10: Remove the water-in-fuel sensor from the factory housing and tighten it into the fuel filter delete block.

STEP 11: Using the new crush washers included with the kit, install the rear banjo bolt first, hand tight, then start the front banjo bolt and hand tighten. Start and tighten the two bolts securing the fuel filter delete block to the engine, and then tighten the two fuel line banjo bolts.



STEP 12: Re-install the two bolts securing the transmission isolators that were removed in STEP 6. Plug in the water in fuel sensor connector and reinstall the intake horn.

STEP 13: Start the truck and monitor for fuel leaks.