



How to switch to Amber (Yellow color) DRL & Parking Lights for ALPHAREX 14-18 GMC Sierra Headlights

ALPHAREX specializes in designing and producing superior and uniquely stylish aftermarket automotive performance lighting with unrival innovative technology. The following instruction guide we take you through on the topic: **How to switch to Amber (Yellow color) DRL & Parking lights for the new ALPHAREX HEADLIGHTS** for your 2014-18 GMC Sierra step by step.

THIS INSTRUCTION GUIDE APPLIES FOR THE FOLLOWING ALPHAREX HEADLIGHT PRODUCT MODELS:

14-18 GMC Sierra LUXX-Series LED Projector Headlights (Alpha-Black) / SKU: 880614

14-18 GMC Sierra LUXX-Series LED Projector Headlights (Black) / SKU: 880615

14-18 GMC Sierra NOVA-Series LED Projector Headlights (Alpha-Black) / SKU: 880616

14-18 GMC Sierra NOVA-Series LED Projector Headlights (Black) / SKU: 880617



Table of Contents



- **STEP 1.** Amber switch plugs location
- **STEP 2.** Connect the Amber switch plugs
- **STEP 3.** Complete switching into Amber DRL & Parking lights

Disclaimer: This article is a tutorial guide. By reading this article, you agree it is for reference only and AlphaRex USA and its distributors make no guarantee on the finished results. Under no circumstances whatsoever shall AlphaRex USA nor its distributors be liable for any damage, misuse or personal injuries. If you do not fully understand the instruction procedure, it is highly recommended that you seek help from professional mechanics to do the instruction.

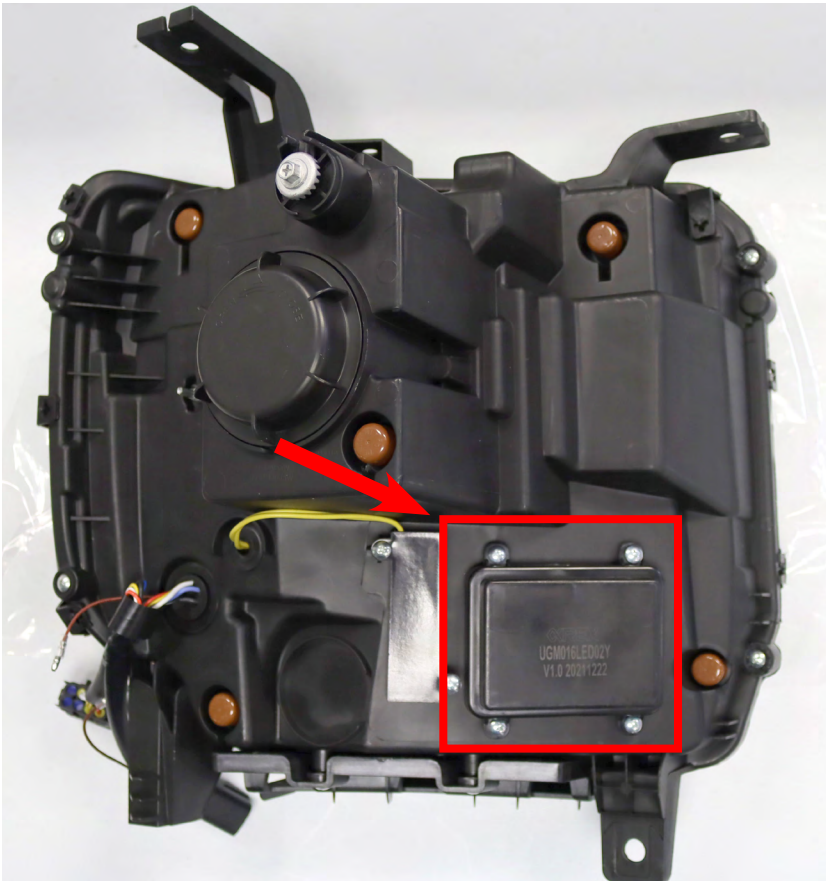
From **The product models list**, the **LUXX-Series** and **NOVA-Series** headlights for 14-18 GMC Sierra come with optional switch plugs for Amber (Yellow color) DRL & Parking lights. By default the DRL & Parking lights color are White from factory.

CUSTOMERS CAN CHOOSE TO SWITCH INTO AMBER (YELLOW COLOR) BASED ON THEIR PREFERENCE. PLEASE NOTE: once you PLUGGED & switched into Amber, the DRL & Parking lights color will remain (Yellow color) at all times.

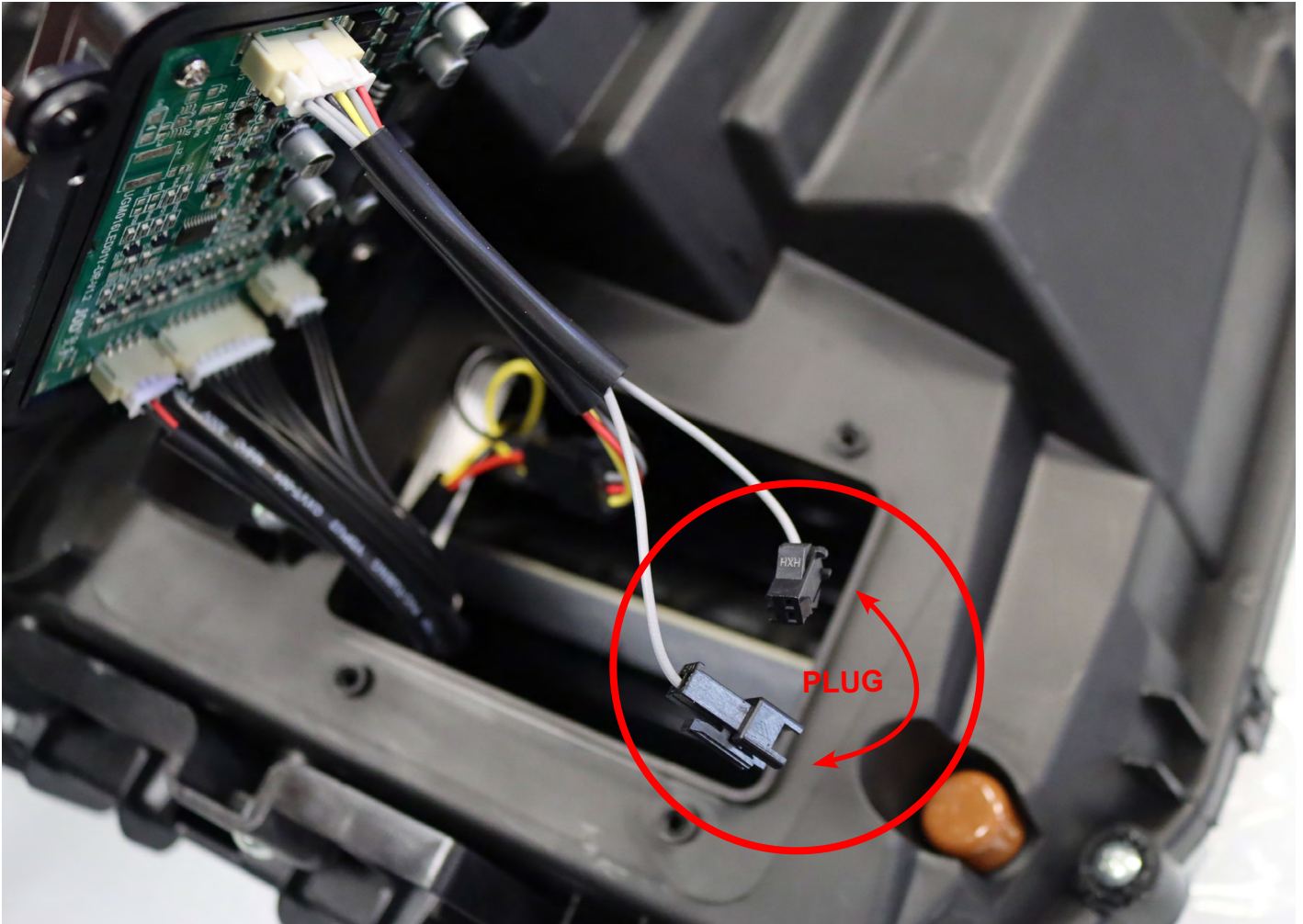


STEP 1. AMBER SWITCH PLUGS LOCATION

Unscrew and open the rectangular cover from back of each ALPHAREX headlights

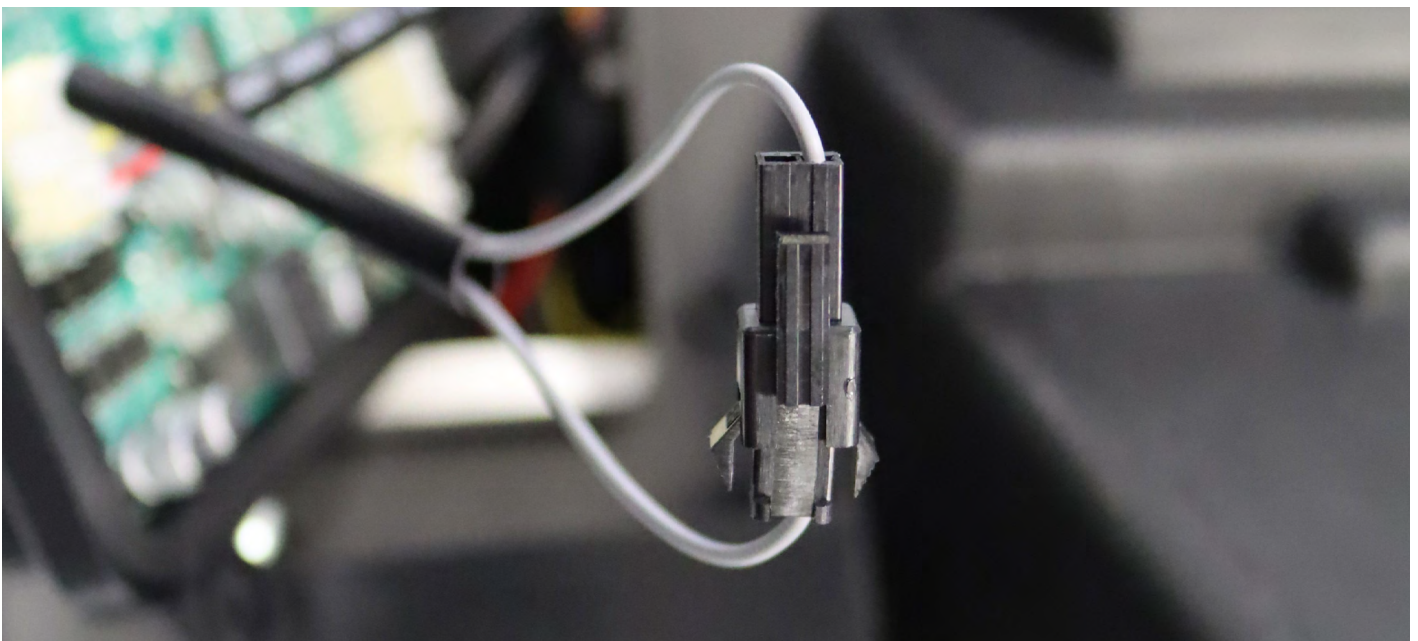


Inside of the headlight, you will find plug connectors for switching into Amber (Yellow color) DRL & Parking lights.



STEP 2. CONNECT THE AMBER SWITCH PLUGS

Connect the amber DRL plugs directly for each of the headlights.



STEP 3. COMPLETE SWITCHING INTO AMBER DRL & PARKING LIGHTS

After plug-in the connections, please install the headlights to the vehicle.

Congratulations! You have switched into Amber (Yellow color) DRL & Parking lights.

