



INSTALLATION INSTRUCTIONS

VEHICLE APPLICATION

Year: **1992-00**

Make: **Chevy / GMC**

Model: **C/K 1500-3500 w/o MAF**

Engine: **6.5L Diesel**

***Will not fit 97-98 vehicles equipped with MAF sensor**

TOOLS REQUIRED

- 9/16" Wrench or Socket
- Phillips head Screwdriver
- 5/16" Nut Driver or Flat Blade Screwdriver
- 7/32" Allen Wrench

S&B FILTER MAINTENANCE

Cleanable (**KF-1047**). If the enclosed filter is Red, it came pre-oiled from the factory. When serviced, apply (**104g**) of S&B oil to the main body of the filter and (**4g**) to the Power Stack (Top).

Disposable (**KF-1047D**). If the enclosed filter is White, it is a disposable high flow filter and should be discarded once it reaches capacity. This filter (**does not require oil**). For more info on extending the life of S&B's disposable filter, visit www.sbfilters.com.

NOTES

Kit may not fit with the following

Aftermarket Parts Installed:

- Body Lift
- Custom Hood
- Intercooler or Turbo Upgrades
- Larger Battery Group #

BEFORE YOU START

- Please read the entire product guide before proceeding.
- Ensure all components listed on page 4 are present.
- If you are missing any of the components, call our customer support at (909) 947-0015.
- Do not attempt to work on your vehicle while engine is hot.
- Make sure the engine is turned off and the vehicle is in Park or the Parking Brake is set.

- 1.** Turn off the truck and set the parking break. Do NOT disconnect the battery terminals.



- 2.** Loosen the hose clamp at the turbo.



- 3.** Loosen the hose clamp on the crankcase vent tube (CVT).



- 4.** Loosen the clamp at the tube/ air box connection. Then remove the tube assembly from the truck.



- 5.** Unclip the air box cover from the air box. Remove the cover and filter from the truck.



- 6.** From under the wheel well, remove the 2 bolts mounting the air box.



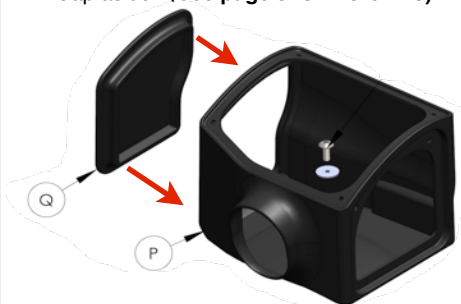
- 7.** Remove the air box from the truck.



- 8.** Remove the OE snorkel from the fender by pressings in the sides and popping it out towards the motor.



- 9.** For those concerned about engine heat, insert the Air Box End Cap (**Q**) into the end of the Air Box (**P**). For those seeking additional air flow, set the Air Box End Cap aside. (**See page 3 for more info**)



SEE EXPLODED VIEW ON PAGE 4

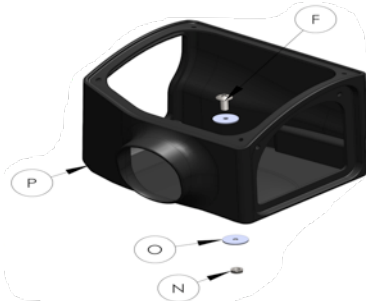


INSTALLATION INSTRUCTIONS (Continued)

10. Place the Air Box (P) into the truck. Line the hole in the bottom of the box to the hole on top of the wheel liner. Position the air inlet of the box into the hole in the fender.



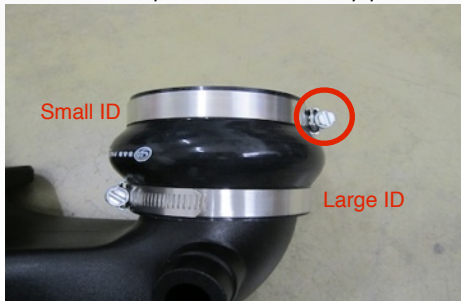
11. Loosely install the Air Box (P) to the wheel liner using the supplied 3/8"x1.0" Button Head screw (F) and Fender Washer (O) on top and the 3/8" Nylock Nut (N) and Fender Washer in the wheel well.



- Note:** For C/K models 1996-00: (If equipped) It may be necessary to carefully bend the mounting tabs on waste gate vacuum canister to clear the new Air Box.



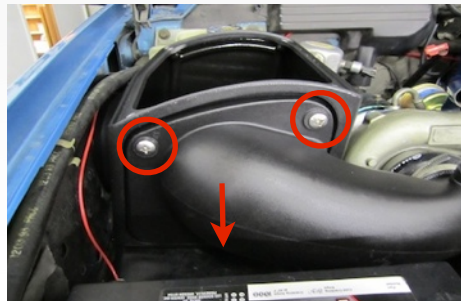
12. Install the Silicone Turbo Adapter (H) to the Intake Tube (L). Install the larger ID end on the tube using the #56 Hose clamp (I). Place the #52 Hose Clamp (G) on the smaller end of the adapter. **Note the clamp position**



13. Install the intake tube assembly onto the turbo first and tighten the #52 Hose Clamp (G) at the turbo.



14. Hook the latch on the Intake Tube (L) to the bottom edge of the Air Box (P). Secure the tube to the box using the 2 supplied 3/8" Truss Screws (M).



15. When you are satisfied with the positioning of the box, tighten the hardware mounting the box to the wheel liner.



16. Install the 2 #16 Hose Clamps (J) on each end of the Silicone CVT Elbow (K).



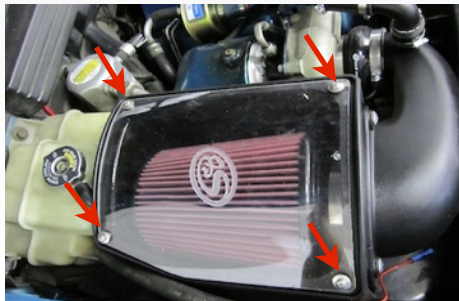
17. With the 2 #16 Hose Clamps in place, slip the longer hose end of the assembly onto the OE vent tube and then push the smaller hose end onto the intake tube. Fully tighten the all hose clamps.



18. Completely loosen the clamp (E) around the Air filter base. Then carefully place the Air Filter (D) (base end first) inside the Air Box (P). Push the base of the filter over the Intake Tube (L) and tighten the hose clamp.



19. Remove the protective covering from the Clear Lid (C), then install the lid. Secure with the 10/24" Screws (A) and Sealing Washers (B). Do not over tighten.



20. Inspect your installation, make sure the kit is properly positioned and all fasteners are secure. Affix the CARB sticker near the intake kit. The installation is now complete.



SEE EXPLODED VIEW ON PAGE 4



INSTALLATION INSTRUCTIONS (Continued)

Air Box End Cap Testing

Stock air boxes are a significant contributor to poor air flow which is why S&B designs custom air boxes with secondary and/or enlarged openings. With that said, S&B recognizes the benefits of cooler air, so we have included a plug to seal off the opening if so desired. For optimal performance, we recommend that the intake be used without the end cap except in conditions of extreme heat.

ISO 5011 Test Data:

With the end cap installed, the intake improves airflow by an average of **26.9%** versus stock.
Without the end cap installed, the improvement increases to an average of **44.4%**.

**PRECISION
FILTER CLEANING & OILING**



Part No. 88-0005

Order online today at www.sbfilters.com or
through your local S&B distributor.

**RELATED ITEMS FOR YOUR
PURCHASE**

- Replacement Air Filter (Oiled)
(S&B P/N: KF-1047)
- Replacement Air Filter (Dry)
(S&B P/N: KF-1047D)
- Air Filter Wrap (S&B P/N: WF-1030)

PERFORMANCE TESTING

- Engage parking brake and start your engine. Listen for abnormal noises. If an air leak is detected, re-inspect hoses and connections as they may need to be repositioned and tightened.
- S&B FILTERS recommends that you keep your OE intake system in the event it is required in the future.
- In order to maintain your warranty, all connections and components must be checked periodically for alignment and for proper tension on all connections. Failure to do so may void your warranty.
- Use only S&B FILTERS cleaning and oil products to service your filter. Using any other brand oil and or cleaners on your S&B air filter may void your warranty.

SEE EXPLODED VIEW ON PAGE 4

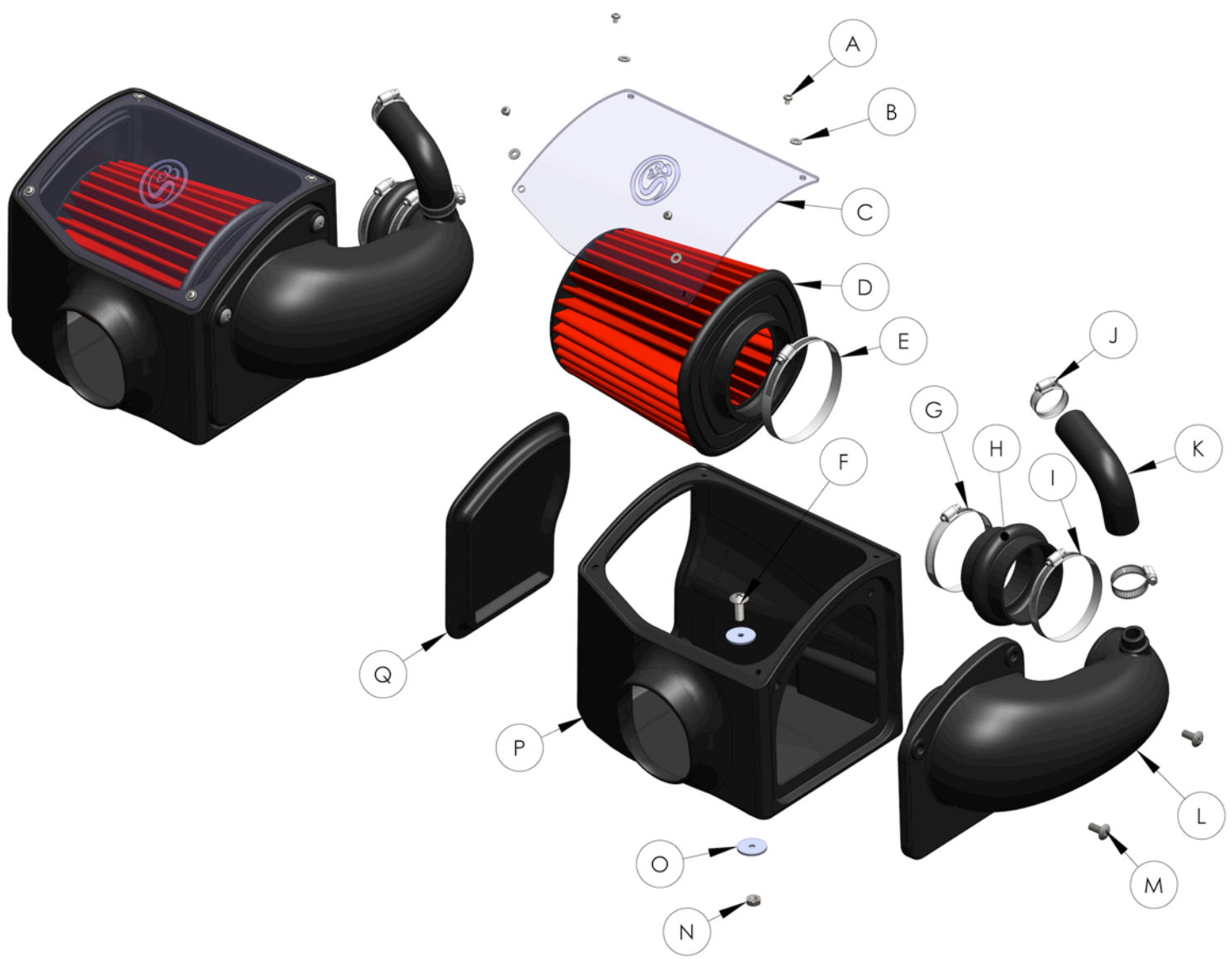
EMISSIONS STANDARD

The California Air Resource Board (CARB) requires that an E.O. identification label be applied to the vehicle in order to pass a smog check inspection when a Performance Intake Kit has been installed. You must place the E.O. label provided on or near the intake kit after installation so that a smog check technician can easily verify the E.O. number. As of April 2009, S&B has never had a product where CARB denied an exemption request; however, the exemption process with CARB can take as long as 18 months. Check the status of the exemption process by looking up a specific part number at www.sbfilters.com. The CARB Exemption number and/or status is listed under the Product Details section for each part number. If the status shows as "Pending," CARB has yet to issue an exemption. Products that have not been issued an EO number are street legal in most states, but may not be used on emission controlled vehicles in the state of California and are for off road use only. If you purchased your kit from S&B Filters directly, we will automatically mail you your Exemption Sticker when it is issued to us. If you purchased your kit from an authorized S&B Filters Dealer, log onto our web site and register to receive your Exemption Sticker.



P/N: 75-5045 / 75-5045D

EXPLODED VIEW



ITEM	QTY.	DESCRIPTION	P/N
A	4	S.S. Screw, 10-24 x 1/2"	AI1287-00
B	4	S.S. Sealing Washer, 10-24	AI1272-00
C	1	Clear Lid	AI1495-00
D	1	S&B Air Filter	KF-1047
E	1	Hose Clamp, #64	AG1018-00
F	1	Button Head Screw, 3/8-16x1.0"	AI1497-00
G	1	Hose Clamp, #52	AG1007-00
H	1	Silicone Turbo Adapter	AI1440-00
I	1	Hose Clamp, #56	AG1019-00
J	2	Hose Clamp, #16	AG1001-00
K	1	Silicone CVT Elbow	AI1516-00
L	1	Intake Tube	AI1119-00
M	2	S.S. Screw, 5/16-18x1.0"	AI1297-00
N	1	Nylock Hex Nut, 3/8-16	AI1498-00

[illegible]