

# Owner's Manual

with Installation Instructions

## Banks Split-Dual Monster<sup>®</sup> Exhaust System

**2011 Ford Power Stroke 6.7L  
Turbo-Diesel F250/F350/F450 Trucks  
Crew Cab 6.75ft & 8ft Bed**

THIS MANUAL IS FOR USE WITH SYSTEM 49790

Gale Banks Engineering  
546 Duggan Avenue • Azusa, CA 91702  
(626) 969-9600 • Fax (626) 334-1743

Product Information & Sales: (888) 635-4565

**[bankspower.com](http://bankspower.com)**

# General Installation Practices

**Dear Customer,**

**If you have any questions concerning the installation of your Banks Power System, please call our Technical Service Hotline at (888) 839-2700 between 7:00 am and 5:00 pm (PT). If you have any questions relating to shipping or billing, please contact our Customer Service Department at (888) 839-5600.**

**Thank you.**

**1.** Before starting work, familiarize yourself with the installation procedure by reading all of the instructions.

**2.** The exploded view (**Figure 1**, pages 4-5) provides only general guidance. Refer to each step and section diagram in this manual for proper instruction.

**3.** Throughout this manual, the left side of the vehicle refers to the driver's side, and the right side to the passenger's side.

**4.** Disconnect the negative (ground) cable from the battery (or batteries, if there are two) before beginning work.

**5.** Route and tie wires and hoses a minimum of 6" away from exhaust heat, moving parts, and sharp edges. Clearance of 8" or more is recommended where possible.

**6.** When raising the vehicle, support it on properly weight-rated safety stands, ramps or a commercial hoist. Follow the manufacturer's safety precautions. Take care to balance the vehicle to prevent it from slipping or falling. When using ramps, be sure the front wheels are centered squarely on

the topsides. When raising the front of the vehicle, put the transmission in park (automatic) or reverse (manual), set the parking brake, and block the rear wheels. When raising the back of the vehicle, be sure the vehicle is on level ground and the front wheels are blocked securely.

**CAUTION! DO NOT USE FLOOR JACKS TO SUPPORT THE VEHICLE WHILE WORKING UNDER IT. DO NOT RAISE THE VEHICLE ONTO CONCRETE BLOCKS, MASONRY OR ANY OTHER ITEM NOT INTENDED SPECIFICALLY FOR THIS USE.**

**7.** During installation, keep the work area clean. Do not allow anything to be dropped into intake, exhaust, or lubrication system components while performing the installation, as foreign objects will cause immediate engine damage upon start-up.

## Tools Required:

- 1/2" and 3/8" drive ratchets with inch and metric sockets and 1/2" and 3/8" drive extension
- Inch and metric combination or open-end wrenches
- Standard screwdriver
- Clean shop towels or rags
- Pry-bar
- Reciprocating saw

## Highly recommended tools and supplies:

- Foot-pound torque wrenches
- Penetrating oil or light lubricant spray
- Oxy-acetylene torch

# Products available from Banks Power for the 2011 Ford 6.7L

2011 Ford 6.7L



## **Banks Monster Exhaust (P/N 49788)**

- Increases exhaust flow, cuts backpressure, lowers exhaust gas temperatures (EGTs) and increases power.

## **Banks Ram-Air Intake System (P/N 42215)**

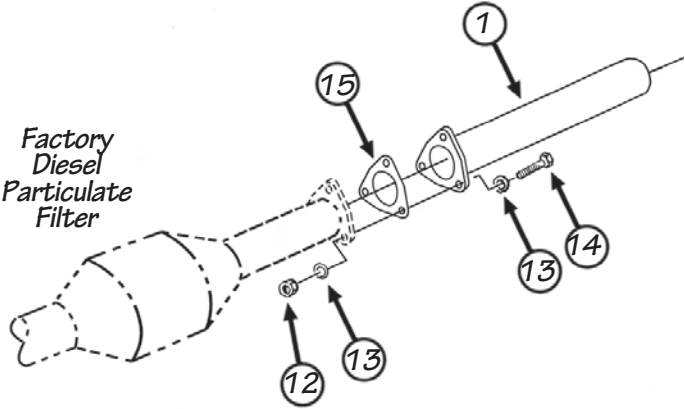
- Increases your airflow over stock.
- Adds power, improves fuel economy, lowers EGTs and reduces smoke.

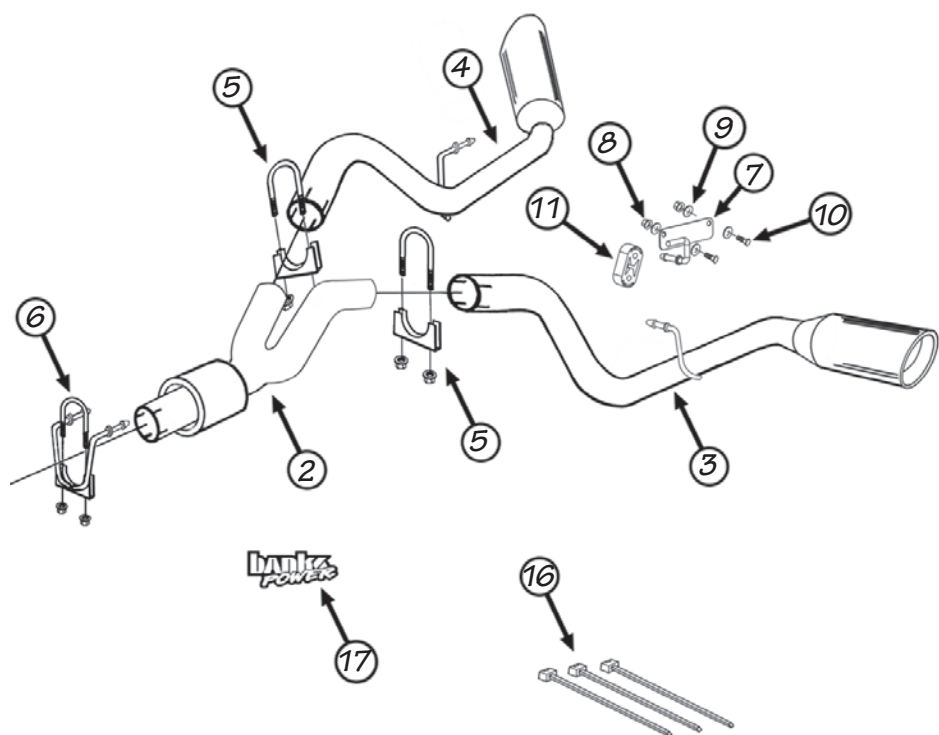
**For More Information please call (888) 635-4565  
or Visit us online @ [www.bankspower.com](http://www.bankspower.com)**

**Figure 1**

# General Assembly Diagram

Item	Description	P/N	Qty.
1	Intermediate Pipe	53997	1
2	Y-Pipe	53983	1
3	Tail Pipe, Left	53984	1
4	Tail Pipe, Right	53985	1
5	Exhaust Clamp, 3.5"	52468	2
6	Hanger Clamp, Rear	53981	1
7	Frame Hanger Bracket	53566	1
8	Nylock Nuts, 7/16"-20	91617	2
9	Washers, 7/16"	91603	4
10	Hex Bolt, 7/16"-20 x 1"	91627	2
11	Rubber Insulator	53732	1
12	Nut, Crimp Lock - 7/16"-20	91619	3
13	Washer, SAE Flat, Zinc - 7/16"	91602	6
14	Hex Bolt, Grade 5, Zinc - 7/16"-20	91629	3
15	Gasket, Intermediate Pipe	93211	1
16	Black 5" Cable Tie	62001	3
17	Banks Urocals	96009	2





# Monster Exhaust System Installation

1. As a precaution, disconnect the ground of the battery (if there is more than one battery, disconnect both).
2. Raise the vehicle and support it with properly weight rated safety stands, ramps or a commercial hoist. Follow the manufacturer's safety precautions. Take care to balance the vehicle to prevent it from slipping or falling. When using ramps, be sure the front wheels are centered squarely on the topsides; place the transmission in park; set the parking brake and place blocks behind the rear wheels.

**CAUTION: DO NOT WORK UNDER ANY VEHICLE SUPPORTED ONLY BY A JACK. SEVERE INJURY MAY RESULT.**

**WARNING! The following step may require the use of a torch and/or saw. Proper safety equipment should be used. Failure to use proper safety equipment may result in severe injury.**

3. Removal of the factory exhaust can be simplified by cutting the factory exhaust pipe behind the muffler. This will allow the tailpipe to be removed as a separate piece.

4. Remove the factory tailpipe from the vehicle by disengaging the exhaust system hanger pins from the rubber hangers using a large screw-driver or pry bar.

*NOTE: Lubricating the rubber hangers with WD-40 or similar lubricant will ease removal of the hanger pins.*

5. Remove the factory muffler from the vehicle by removing the three (3) nuts from the factory exhaust flange located at the factory muffler inlet.
6. Locate the supplied intermediate pipe and cut the intermediate pipe based on the following configurations.

See **Table 1**. Cut the NON-flanged end of the intermediate pipe. See **Figure 2**.

7. Install the Banks flanged intermediate pipe and 3-bolt gasket onto the factory exhaust flange outlet. Loosely assemble with the supplied bolts, washers, and nuts.

8. Install the rear hanger clamp onto the intermediate pipe outlet with the hanger pins facing the rear of the vehicle. Insert the two (2) hanger pins into the rear rubber hangers and adjust the hanger clamp to a position that best supports the intermediate pipe. See **Figure 3**.

9. Install the Y-pipe over the intermediate pipe as shown in **Figure 1**. Install clamps onto each Y-pipe outlet.

10. Locate the two slots on the rear diver side frame rail and install the supplied Banks hanger bracket using the supplied hardware. Be sure the hanger pin is align parallel to the frame rail and torque the hardware to 48ft-lbs. See **Figure 4**.

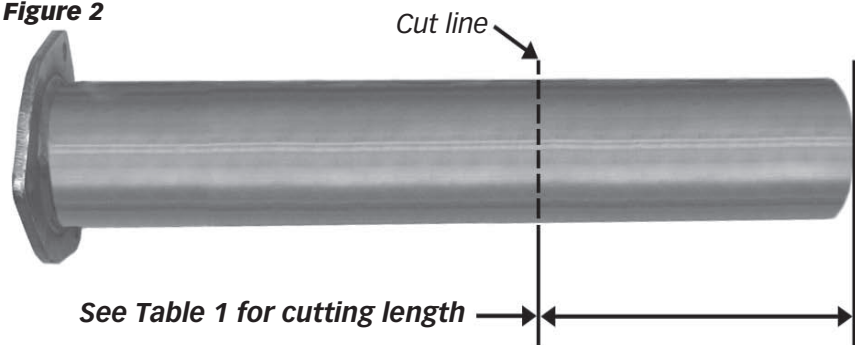
11. Install the supplied rubber insulator onto the Banks hanger bracket.

12. Install the driver-side tailpipe onto the left Y-pipe outlet. Install the driver-side tailpipe hanger into the vehicle rubber insulator. Position the rubber insulator as shown in **Figure 5**.

13. Install the passenger-side tailpipe onto the right Y-pipe outlet. Install the passenger-side tailpipe hanger into the vehicle rubber insulator. Position the rubber insulator as shown in **Figure 3**.

14. Loosen and move the spare-tire to the rear of the vehicle and center between the dual tailpipes. Securely tighten the spare tire so that it is retained in place see **Figure 6**.

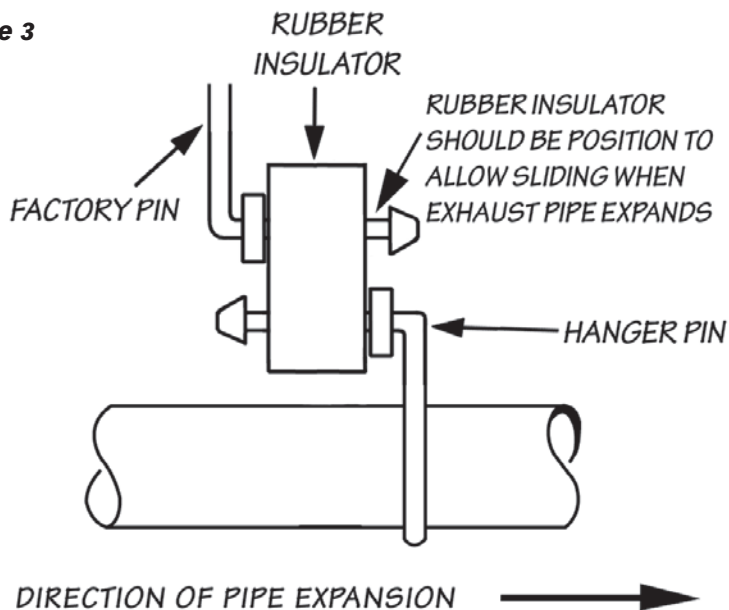
**Figure 2**



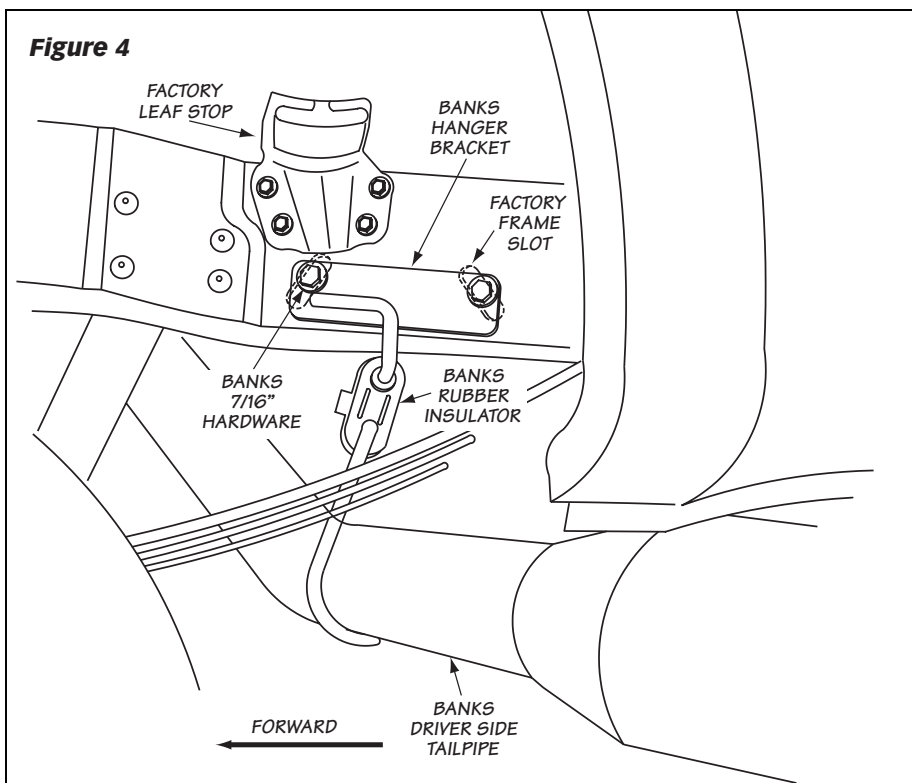
**Table 1**

<b>2011 Ford Power Stroke 6.7L</b>		
	Wheel Base	Cut this length from the Intermediate Pipe. See <b>Figure 2</b> .
Crew Cab/ Short Bed F-250/350	156.2"	17.375"
Crew Cab/ Long Bed F-250/350	172.4"	1"
Crew Cab/ Long Bed F-450	172.4"	2.5"

**Figure 3**



**Figure 4**



**15.** Adjust the Tailpipe Tips under the rear fender such that the tip position is aesthetically pleasing.

**16.** With everything positioned properly, begin to tighten the clamps starting with the ones closest to the turbo and working your way back. Evenly torque the exhaust clamps to 35 ft-lbs. Make sure that each slip is fully inserted (+/- 1/4 inch).

**17.** Remove the protective covering from the tailpipe tip.

**CAUTION: The protective covering may ignite and burn if not removed prior to running the engine.**

**18.** Re-route any vent hose or brake lines away from the tailpipe using the supplied Cable ties.

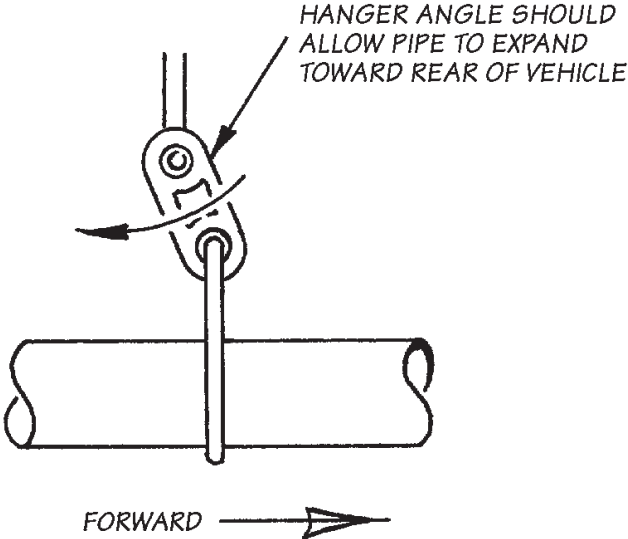
**19.** Your system includes two "Banks Power" logos designed to complement the Ford badge on your truck. Use the provided measurements (see **Figure 7**) to position the logos for a clean factory look.

**20.** Re-connect battery terminals. Start the engine and listen for exhaust leaks. Tighten the exhaust clamps as necessary. Whenever possible, tack weld slip connections to prevent disengagement is recommended.

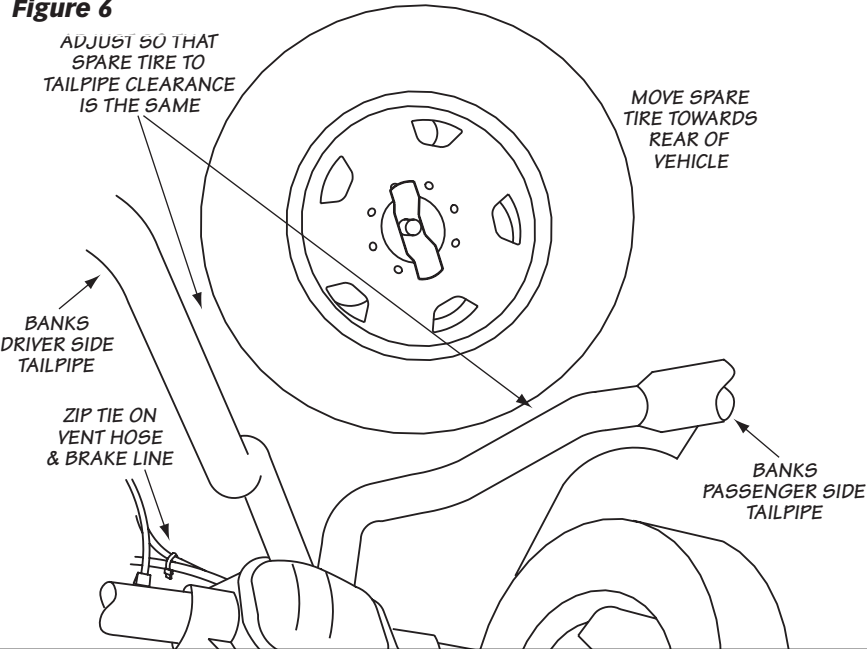
**21.** The Banks Monster Exhaust installation is now complete.



**Figure 5**



**Figure 6**



**Figure 7**



# NOTES

Gale Banks Engineering  
546 Duggan Avenue • Azusa, CA 91702  
(626) 969-9600 • Fax (626) 334-1743

Product Information & Sales: (888) 635-4565

**bankspower.com**