

START HERE

Install Sheet #7333 | Cognito 3" Performance Leveling Kit for 2013-2021 Dodge Ram 3500HD SRW & DRW Trucks (excludes Automatic Level-Rear Air Suspension) | SKU: 115-P1016



34935 Flyover Ct. Bakersfield, CA 93308
Phone: (661) 588-8085 | Fax: (661) 588-8295

INSTALL SUMMARY SHEET:

Cognito 3" Performance Leveling Kit for 2013-2021 Dodge Ram 3500HD SRW & DRW Trucks (excludes Automatic Level-Rear Air Suspension)
SKU: 115-P1016



PARTS LIST FOR SKU: 115-P1016

QTY.	PART #	DESCRIPTION
2	COIL-SPRING-2003	Ram 3" Lift Front Coil Spring
1	115-90920	Ram Fixed Length Track Bar
2	215-90945	Fox 2.0 (PSMT) Front IFP Shock
2	215-90337	Fox 2.0 (PSMT) Rear IFP Shock

INTRODUCTION

Thank you for purchasing the Cognito 3" Performance Leveling Kit. This kit is designed to level your vehicle and provide added droop travel. This kit also includes Fox Performance Series Monotube Shocks front and rear for added adjustability and to ensure improved ride quality and satisfaction.

WARNING

Please read this entire instruction sheet before beginning installation. Proper installation of these components requires a qualified mechanic. Always wear safety glasses when using power tools and take appropriate precautions when working under a vehicle. If these instructions are not properly followed you may jeopardize your, and your passenger's safety, and severe frame, suspension or tire damage may also result from improper installation.

TECHNICAL INFORMATION

- **This kit does NOT fit 2WD models**
- Always wear safety glasses when using power tools.
- This leveling kit may only be installed on a truck that has not already been lifted or leveled. You cannot stack leveling kits or shock spacers.
- Only the shocks supplied in this kit can be used with this leveling package.
- **This INSTALL SUMMARY SHEET will guide the installer through the proper order of steps to install the individual components that comprise this leveling kit, by referring to the specific Instruction Packets provided with each Cognito component.**
- This kit requires advanced mechanical procedures that should only be performed by a qualified mechanic.
- Read each set of instructions carefully and study the pictures before attempting installation.
- Check the parts and hardware packages against the parts list in each instruction set to assure that your kit is complete.

This Kit Install Summary will guide you through the **necessary order of steps** to install each of the individual components that comprise this kit in the required sequence to safely complete full and proper installation.

The proper installation of this combination of products is dictated by the necessary sequence in which each component must be installed to avoid access, interference or clearance issues that will result in unnecessary disassembly and reassembly and potential safety hazards.

This document will guide you through the sequence of operations, which includes work to prepare for the installation and the prescribed order for installing components – by referring you to the individual instructions packaged with each Cognito component for detail on how each kit component is properly installed.

YOU MUST FOLLOW THESE STEPS IN SEQUENTIAL ORDER FOR PROPER INSTALLATION OF THIS KIT.

REVIEW TECHNICAL NOTES AND REQUIREMENTS OF THE INDIVIDUAL INSTALLATION INSTRUCTION SHEETS INCLUDED WITH THIS KIT BEFORE BEGINNING.

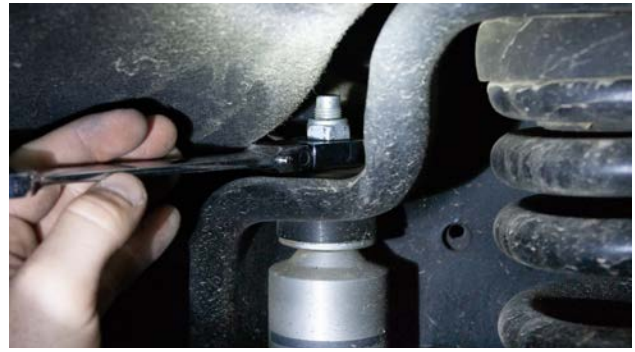
INSTALLATION

1. Begin by locating the **1** instruction sheet **8161** included in the component boxes of this kit. You will need it to do this install. If instructions are missing or damaged, contact Cognito Motorsports so we can email or mail you replacements.
2. Remove the front shocks from both driver and passenger side of the vehicle (Figure 8 A/B)

Figure 8B: Front Shock, Lower Mount



Figure 8A: Front Shock, Top Mount



3. Properly position and check to ensure that all brake lines, vacuum lines, hoses, and wiring are free to lift vehicle. Raise the vehicle slowly until the front spring preload is removed (Figure 9A). DO NOT raise the vehicle any higher than necessary to remove springs. This could result in driveline, wiring, brake line, and suspension component damage. Remove front springs and rubber isolator from the driver and passenger side spring perch (Figure 9B).

Figure 9B: Spring Removal



Figure 9A: Vehicle Lift Height

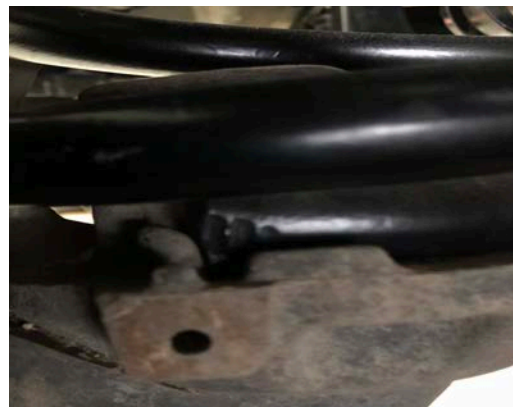


4. Locate the Cognito coil spring (COIL-SPRING-2003), and align the OE rubber isolator, removed in step 9, with the top spring pig-tail (Figure 14A). Install the spring with isolator onto the lower spring perch and rotate until the bottom spring pig-tail makes contact with OE spring perch tab (Figure 14B). Repeat for the opposing side of vehicle front spring.

Figure 14A: Coil Spring and Isolator Orientation



Figure 14B: Bottom Spring Pig-tail Orientation



5. Once the springs are installed, locate the Cognito/FOX extended length shocks. Remove the top washer (Figure 15A) and bushing, then insert the top shock mounting stud through the frame, making sure the polyurethane pancake bushings are in place on both sides of frame. Install the top mounting washer with the concave side against bushing (Figure 15B). Repeat for the opposing side front shock, but do not tighten at this time.

Figure 15A: Concave Shock Mounting Washer



Figure 15B: Top Shock Mount Installed



6. Before starting this step, it is recommended to get another person to assist you. Align both front shock bottom eyelets into lower shock mount shackle. Slowly lower the vehicle until the lower shock eyelets are aligned with the shackle mounting hole (Figure 16A). Re-install the OE bolt and locking nut plate, then torque to OE torque specifications (Figure 16B).

Figure 16A: Front Lower Shock Mount



Figure 16B: Front Lower Shock Mount Installed



7. Reference instruction set **8161** until track bar installation is complete.
8. Install the supplied rear shocks using OEM mounting hardware and torque to OEM specifications.
9. With the vehicle on the ground, tighten to front shock upper mounting nuts until rubber bushings are compressed. Do not over tighten the nuts or bushing damage will occur.
10. Although the steering wheel is now straight, the vehicle may still need a proper professional alignment.

This completes the installation steps, enjoy your new Cognito Performance Leveling Kit!

WARRANTY / RETURN POLICY / SAFETY

Cognito Limited Lifetime Warranty

Cognito Motorsports, Inc. hereinafter "Cognito," warrants to the original retail purchaser, that its suspension products are free from workmanship and material defects for as long as the purchaser owns the vehicle on which the product(s) were originally installed. This warranty will be void if any modifications are made to the components, including alterations to the surface finish, i.e.; painting, powder coating, plating, and/or welding, or if they are improperly installed. Cognito truck suspension products are not designed nor intended to be installed on "competition" vehicles used in race applications, stunt or for exhibition purposes that are outside of the intended operating conditions specified by the manufacturer. Racing and competition are defined as any contests between two or more vehicles; or vehicles competing individually on off road circuits in timed events (whether or not such contests are for an award or prize).

This warranty does not include coverage for police, taxi, government or commercial vehicles, and the warranty does not cover Cognito products sold outside of the USA. Cognito's obligations under this warranty are specified and applied at its sole discretion, and warranty coverage is limited to repair or replacement of the defective product(s). Any and all costs of removal, installation or reinstallation; freight charges, incidental or consequential damages associated with the covered products are expressly excluded from this warranty.

The following items are exempt from Cognito limited warranty coverage: bushings, bump stops, tie-rod ends (Heim joints) and limiting straps. These parts are "consumables" and designed to wear as a normal part of their duty cycle, therefore they are not considered defective when worn. The aforementioned products are warrantied separately against defects in workmanship, for 60 days from the date of purchase. As a condition of warranty validation, respective Cognito suspension components must be installed as a complete system (not combined with non-Cognito hardware or ancillary parts). Any substitutions or omission of required components will void the warranty. Some minor cosmetic wear and imperfections may occur to parts during shipping, which is not covered under this warranty. This limited warranty does not apply to any components that have been subjected to collision damage, negligence, alteration, abuse, or misuse, and coverage does not extend to products manufactured by third-party companies. Cognito reserves the right to supersede, discontinue, or change the design, finish, part number and/or application of its parts when deemed necessary, without notice.

Return Policy

Product returns will not be accepted without prior written approval from an authorized Cognito representative. All products being returned must be shipped via trackable, prepaid freight. Returned products are subject to a 25% percent restocking fee. The eligible return period for products purchased directly from Cognito is 30 days from the verified date when the product(s) were originally received by the purchaser.

Product Safety Advisory

The installation of Cognito steering and suspension components will modify your vehicle's original factory equipment and geometry, which may cause it to handle differently than a stock (unaltered) vehicle. Installation of these components is not intended to strengthen nor reinforce the vehicle's frame, nor are they designed to increase rollover protection. It is necessary to periodically inspect all suspension and drive train components for proper attachment, torque specifications, operation, and for any potential unusual wear or damage. Installation of these parts will modify the height of the vehicle and may raise the center of gravity. Modifying vehicle height combined with off road operation may increase your vehicle's susceptibility to rollover conditions, which may cause serious injury or death. Many states regulate allowable vehicle height modifications, and it is your responsibility to know and comply with the legal requirements specified by the laws where you reside. Modifications to your vehicle's ride height may also affect the ride quality, driver input response, trackability and handling, and wear to your vehicle's suspension components and tires.