

INSTALLATION MANUAL

DFD-4000

ACCESSORY:

Duramax Filter Delete



FASS[®]
Diesel Fuel Systems

ENGINEERED EXCELLENCE

Dear Valued Customer,

“Made in the USA” is not just a slogan at FASS; it’s what we live by! FASS is not only assembled in the USA but 98%+ of the FASS product is manufactured in the USA, helping to employ Americans and strengthen America. At FASS, we scrutinize our suppliers and demand the highest quality American-made components. However, this does come at a price, which is one of the main reasons FASS products are more expensive than the competition. Remember price does not dictate quality but quality does dictate price! Here at FASS, we believe it’s worth the commitment and will continue this practice to support America! Our competition is doing exactly the opposite by using foreign-made components.

Building extremely “High-Quality” fuel products is our business. We concentrate all of our efforts in this arena. No one else is as specialized as FASS in what we do! This is one of the ingredients to insure you are running with the “Highest-Quality” fuel system in the world! We have implemented very rigorous testing procedures to provide the “Highest Quality” we have become known for. Not only is our product superior, but customer satisfaction is #1 at FASS. It is our goal to provide the best service possible. Our confidence is evident in the products we make as each product is backed by an industry leading warranty!

Our R & D department, in conjunction with our Dealer Support department, is continually searching for ways to improve quality, expand our product line, and provide superb support to our network of dealers so our customers’ needs and expectations will be exceeded.

To help insure you receive the proper system and customer support at the local level, FASS has a VIP and Authorized Dealer network representing FASS products. We recommend you go to www.FASSride.com, click “Find A Dealer”, put in their ZIP code, select the type of dealer, and see if the company you purchased from is listed. If they are not, put their phone number in the field below the ZIP code field to see if they are listed. Below these two fields is a list of “Terminated/Unauthorized” dealers. You may want to review this list. If the company is not listed or is on the “Terminated/Unauthorized” list, we suggest you return the product immediately to that dealer and call FASS. We’ll recommend you to the nearest dealer.

INSTALLATION MANUAL

Follow these steps to ensure a simple installation of your new FASS ACCESSORY

1. *Read the installation manual completely before attempting installation. The installation of this product indicates that the buyer has read and understands the limitations of the FASS manufacturers warranty agreement and accepts the responsibility of its terms and conditions.*
2. Inventory the package components. Notify the place of purchase immediately of any parts missing or damaged.
3. The installation recommendations contained herein are guidelines. Use good judgment and take into consideration your vehicles' accessories.
4. For best results in accuracy and efficiency (due to training, communication, and our relationship with our dealer network), we recommend an Authorized or ViP FASS Fuel Systems dealer for the installation. They are prepared to install the FASS fuel pumps with the most efficiency. If a situation/problem arises during the installation, they are the most prepared for that situation/problem. DPPI is not responsible for any installation mistakes.
5. If you have any questions or concerns that can not be addressed with your dealer, email or call FASS.
6. If any installation procedure is uncertain, contact FASS technical support.

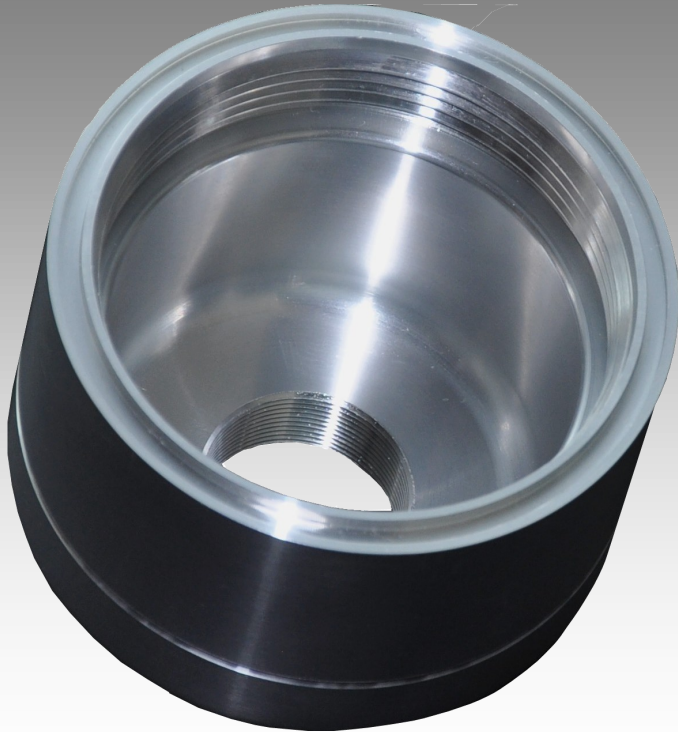
Email techsupport@FASSride.com with the following information:

- Your Name, address and daytime phone number
- Date of purchase
- Nature of Your Concern

Call customer service; [636-433-5410](tel:636-433-5410) with the following information:

- Date of purchase

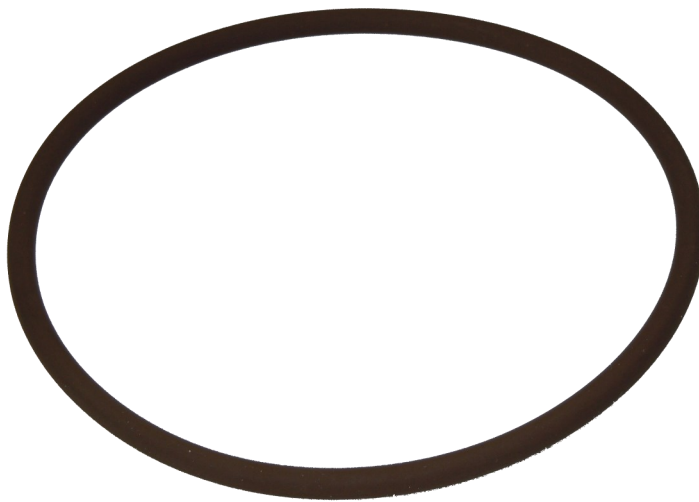
CONTENTS



DFD-4000



Brass Plug



O-Ring

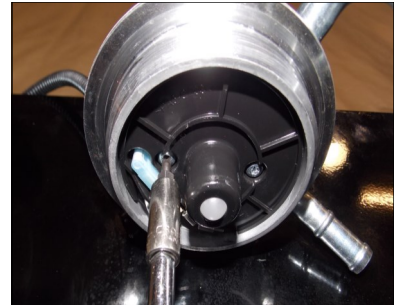
ATTENTION!!!! ONLY USE WITH AN EXTERNAL FILTER SYSTEM WITH PROPER MICRON RATINGS!!!! CLEAN BEFORE INSTALLING!!!!

INSTALLATION

- A. Drain factory filter, remove filter and unplug factory fuel heater wire located on top of factory filter head



- B. Using a T20 Torx bit remove the 2 screws holding the factory fuel heater in place. Be sure not to lose the 2 o-rings on this fuel heater. Once removed pull the ball and spring out of the filter head



- C. Reinstall fuel heater into filter head without the ball and spring. DO NOT OVER TIGHTEN SCREWS



- D. Install o-ring into DFD-4000 and apply oil or grease to prevent damage to o-ring. Insert fuel pressure gauge or supplied brass plug into DFD-4000.



- E. Remove WIF sensor from factory filter and reinstall into DFD-4000. Reconnect the fuel heater wire and screw DFD-4000 onto factory filter head. DO NOT OVER TIGHTEN



NOTES